

# Outer Hebrides Community Planning Partnership

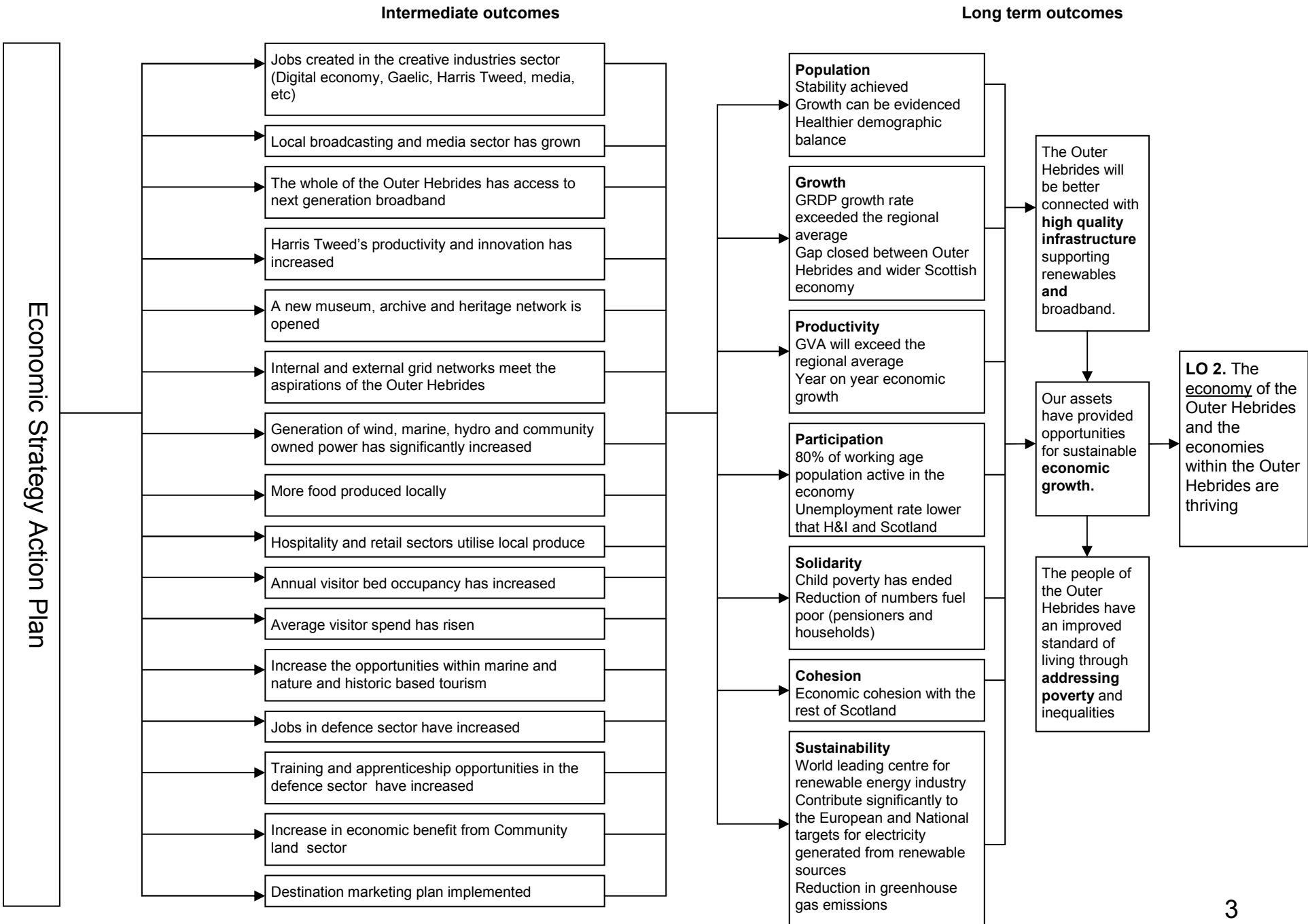


## SOA Logic Models

2013-2016

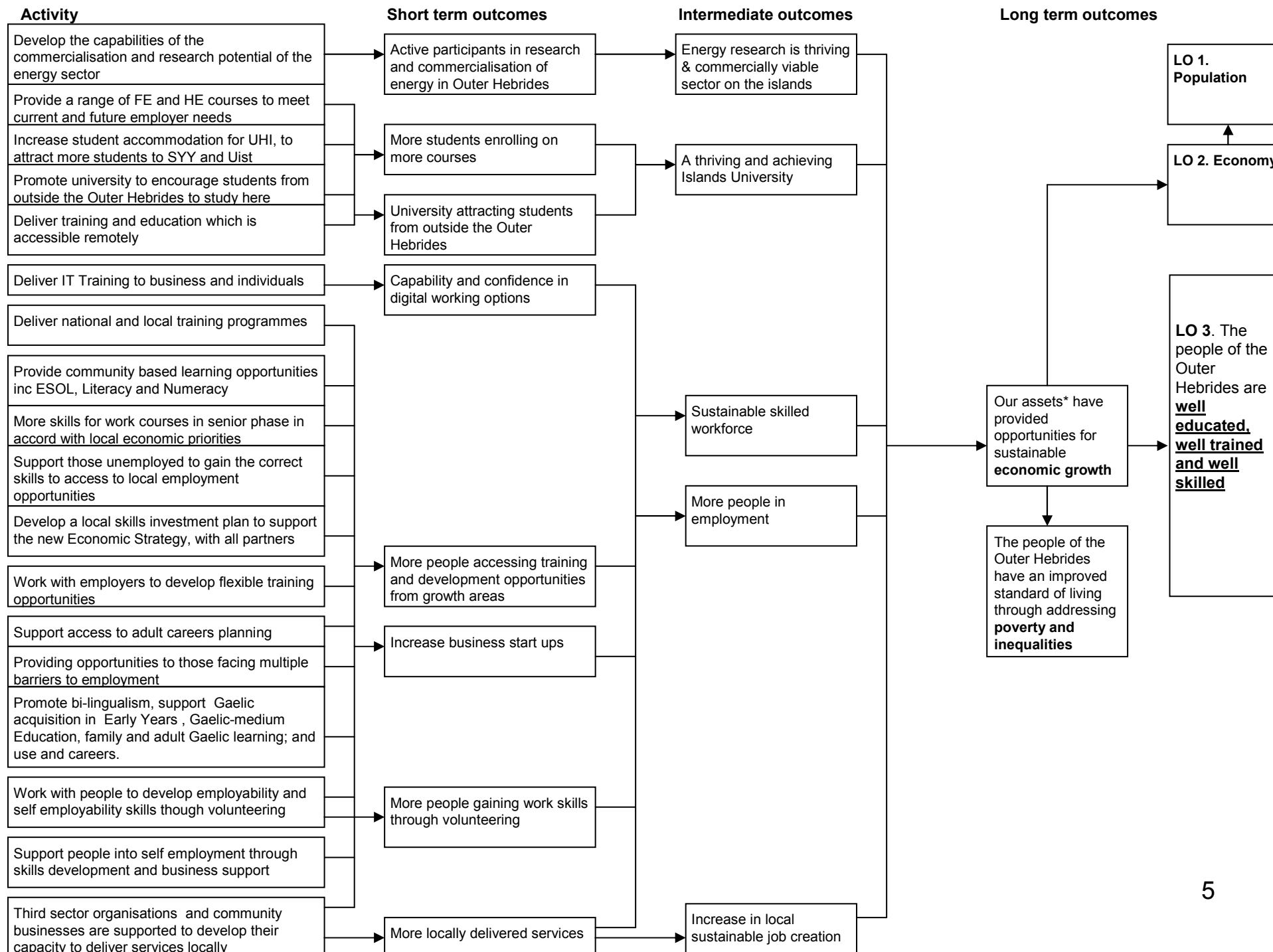
# SOA Logic Models: Economy

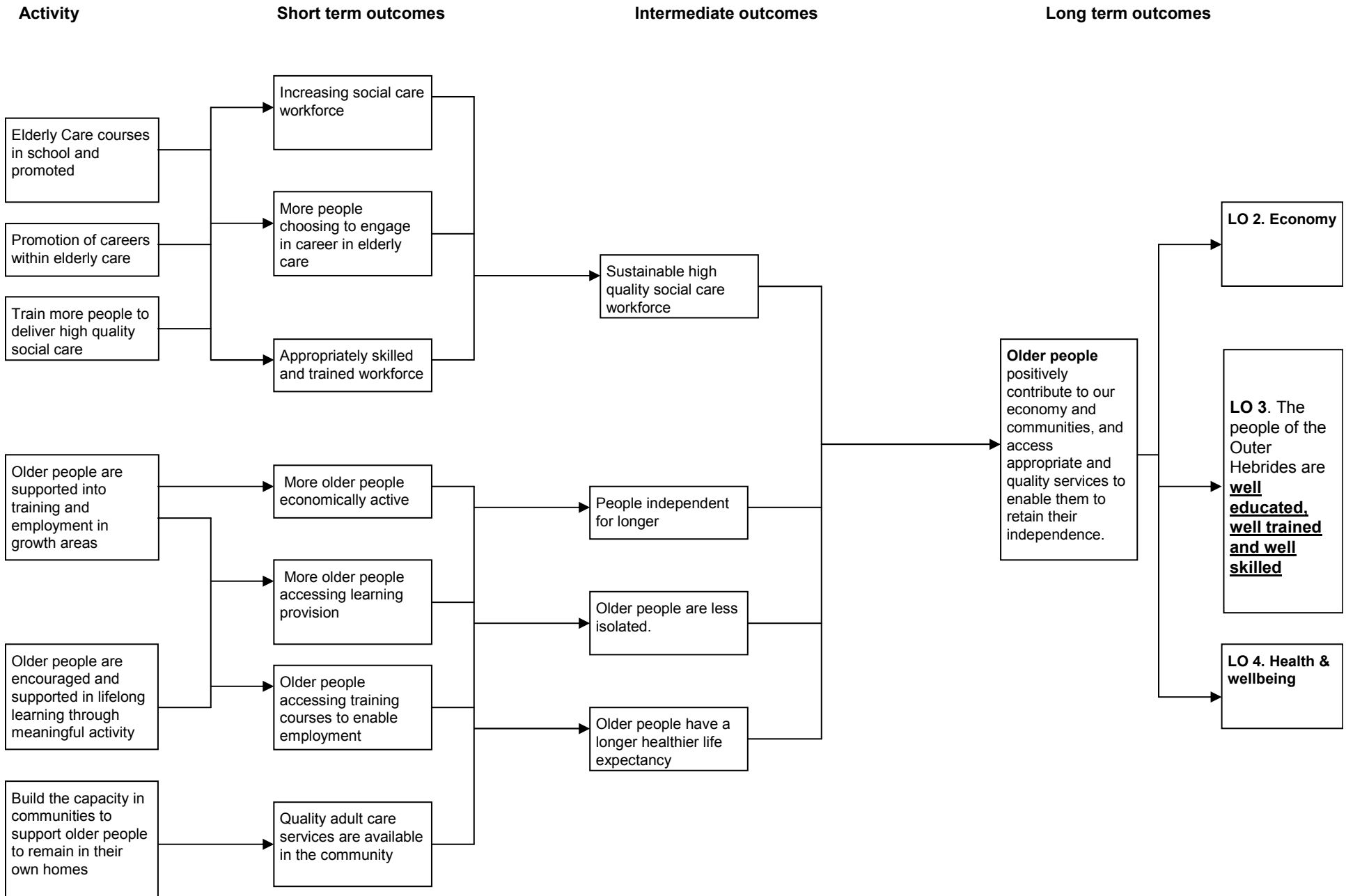


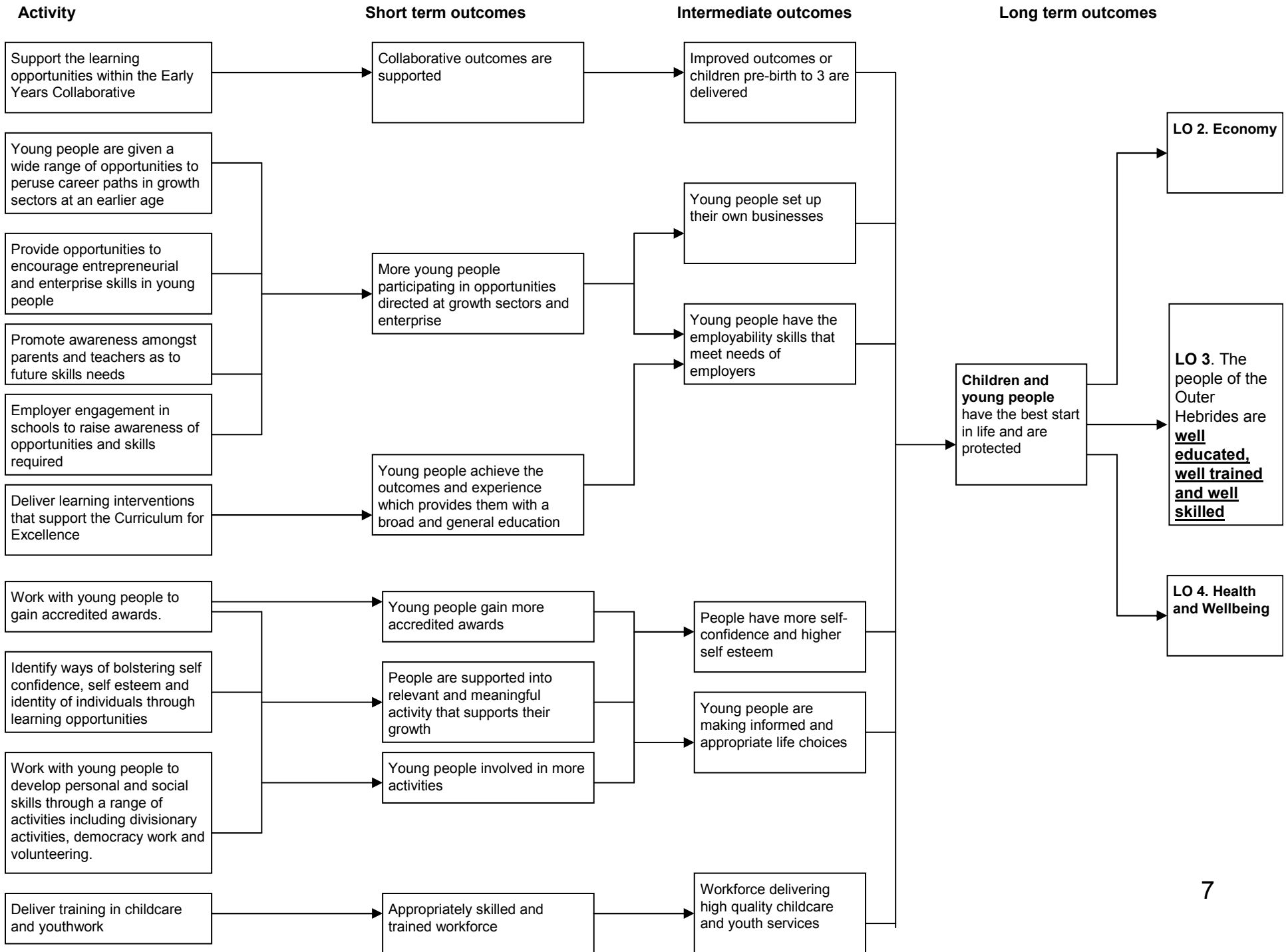


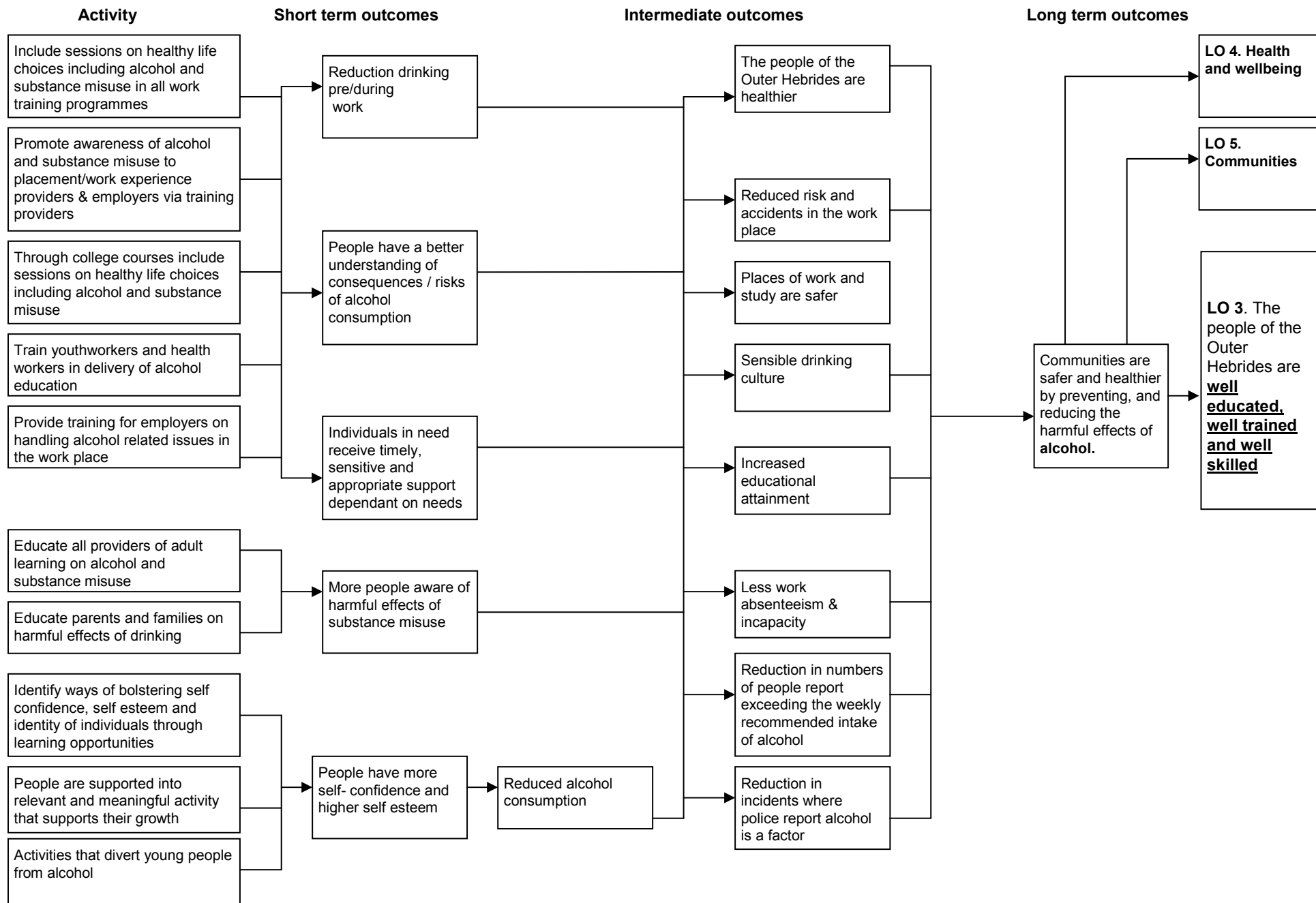
# SOA Logic Models: Education, skills and training



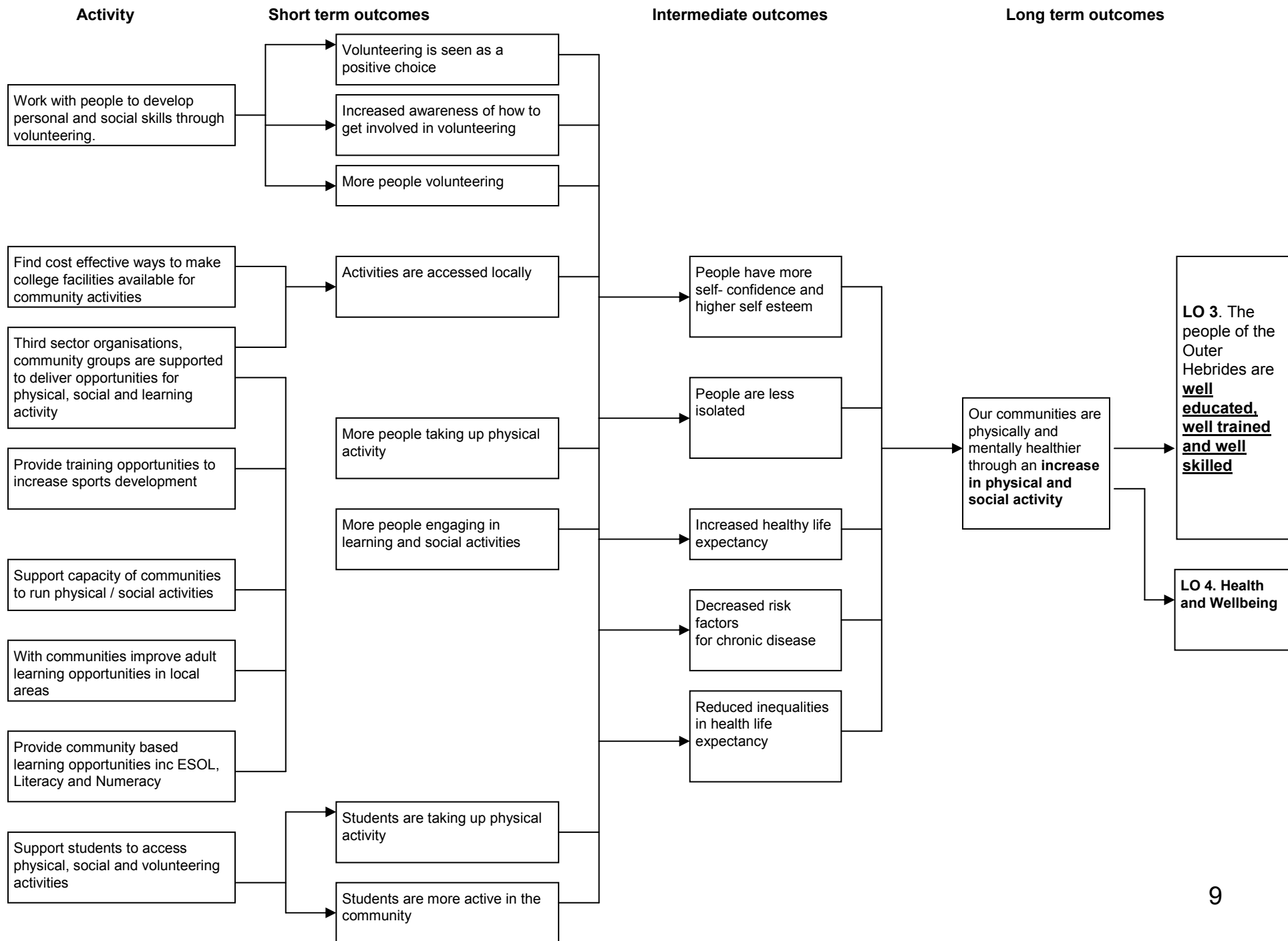






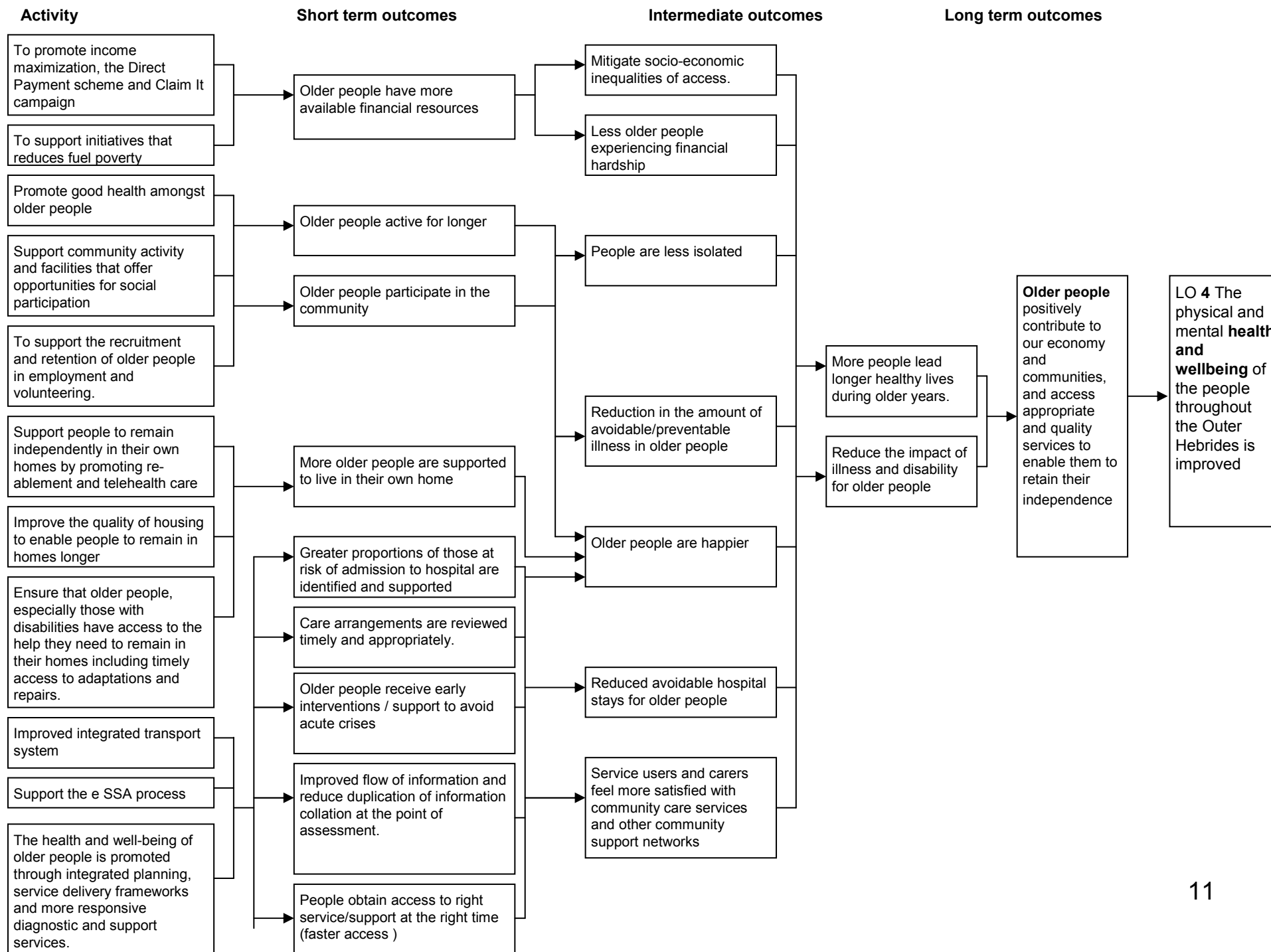


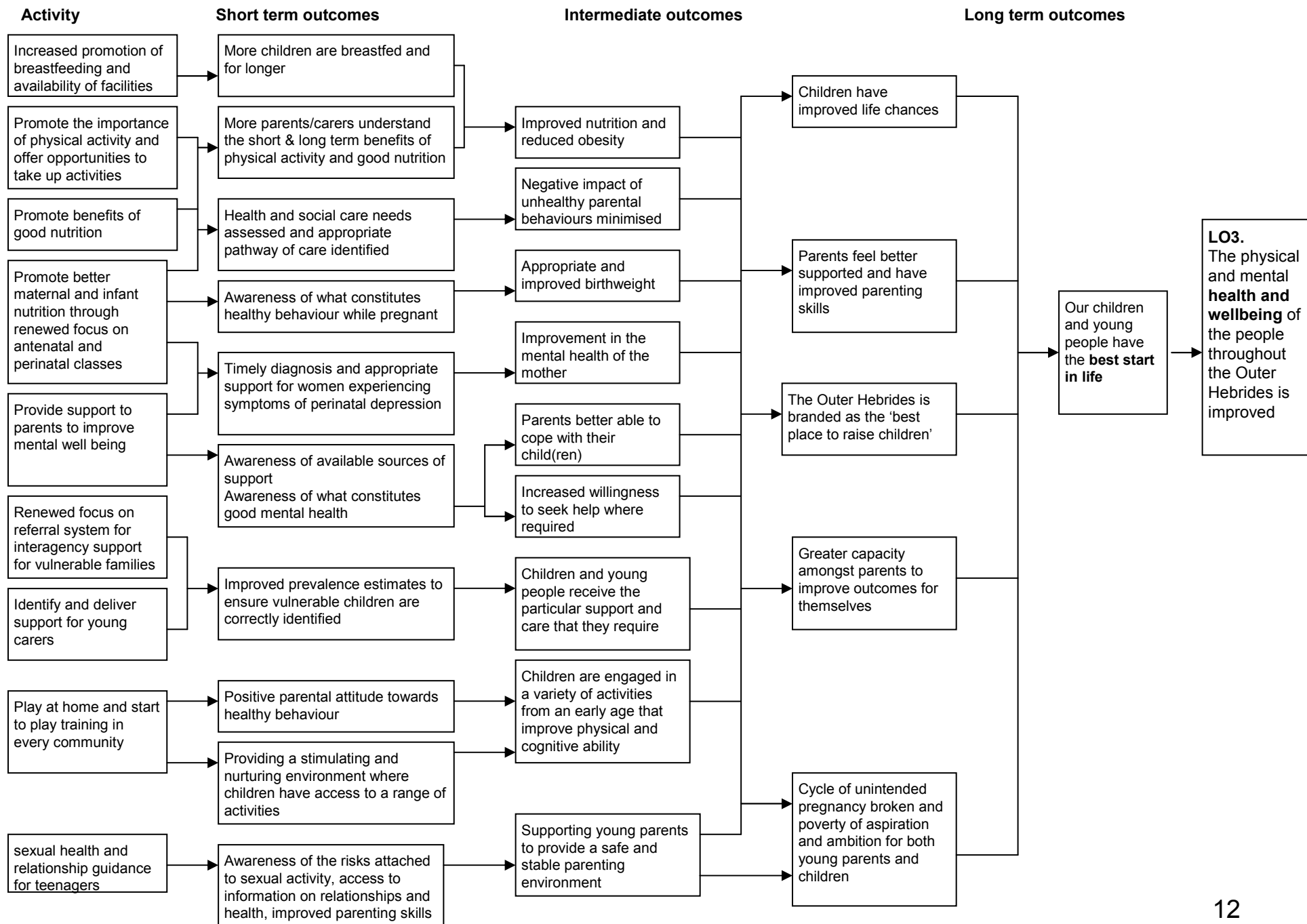




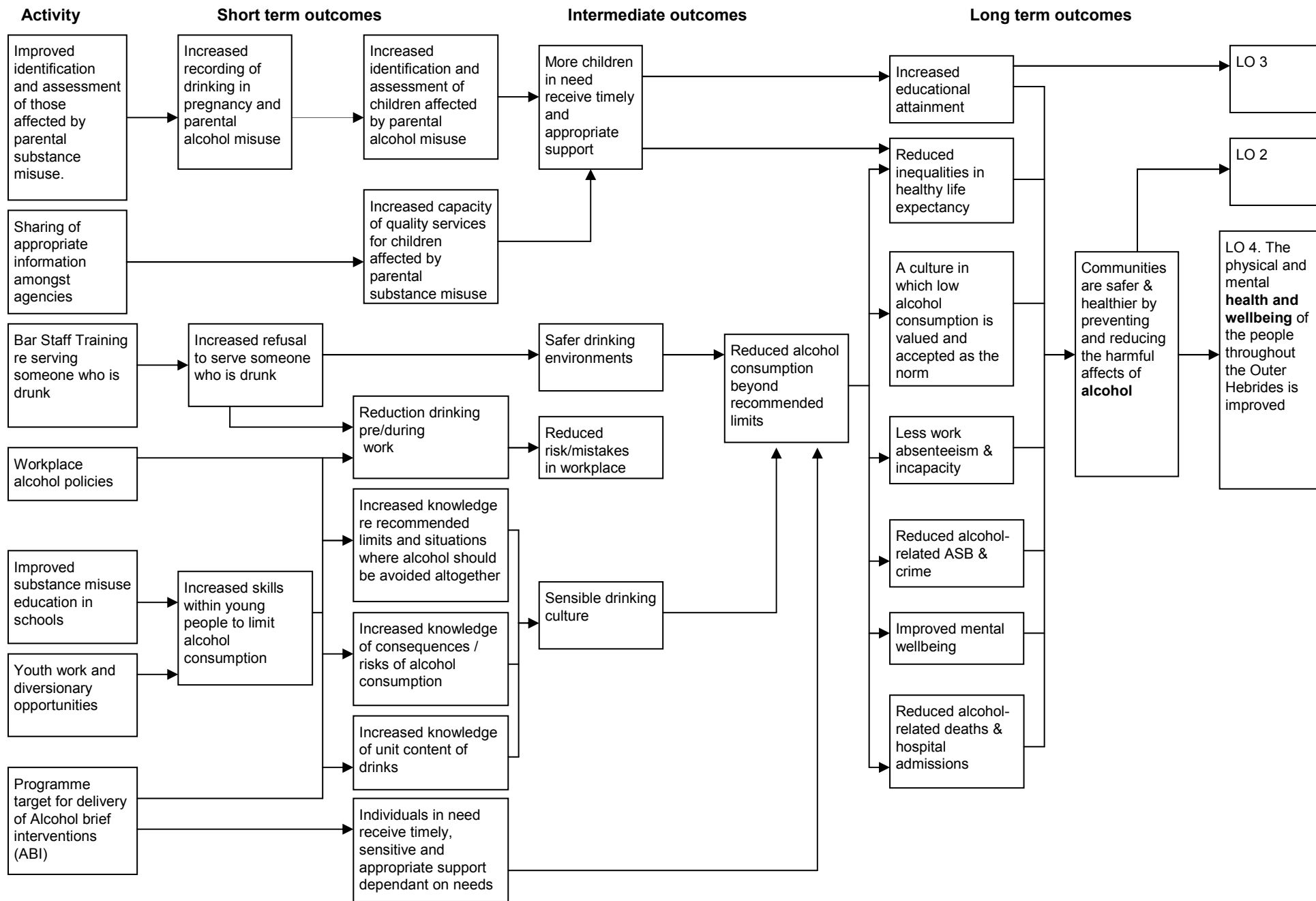
# SOA Logic Models: Health and Wellbeing

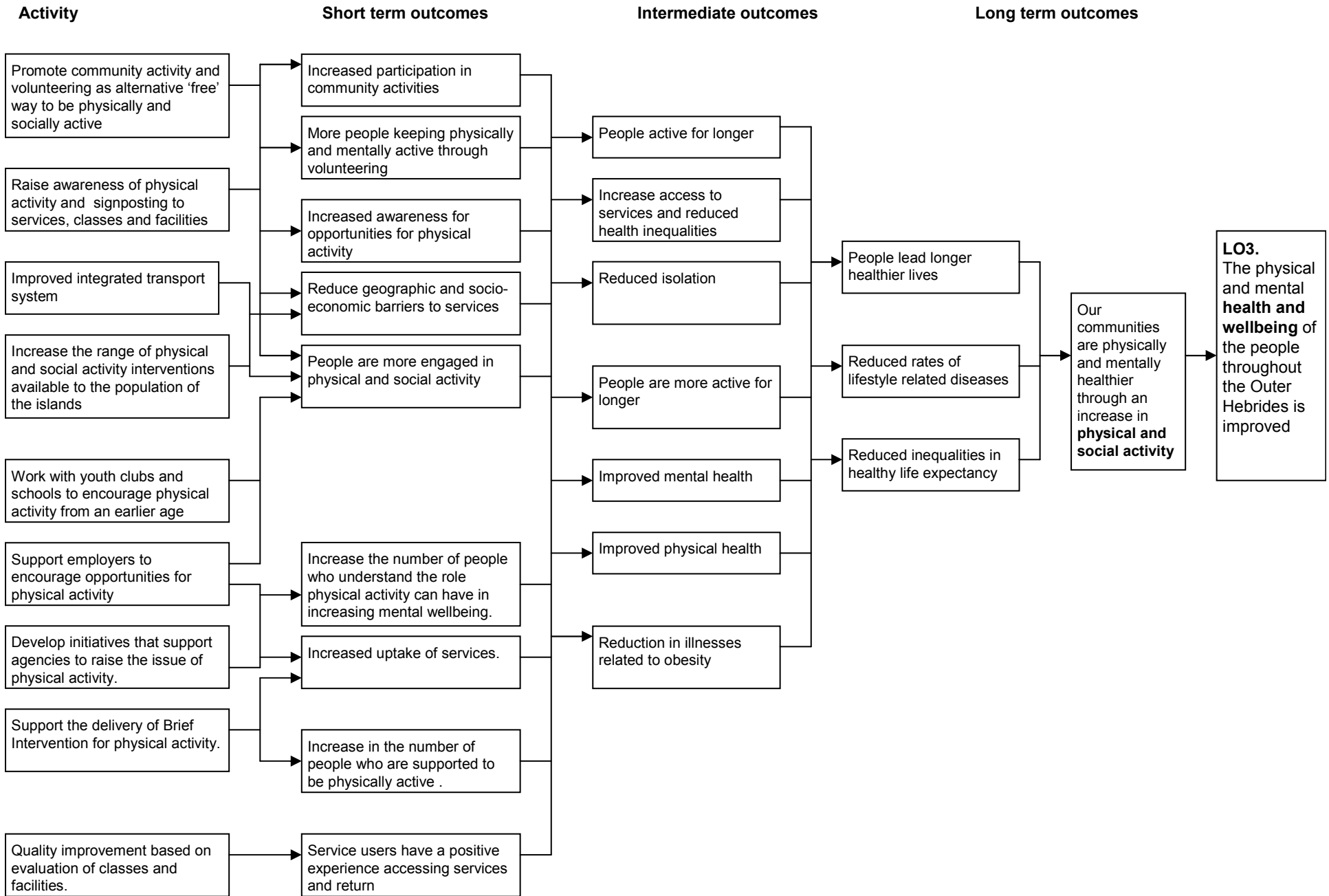


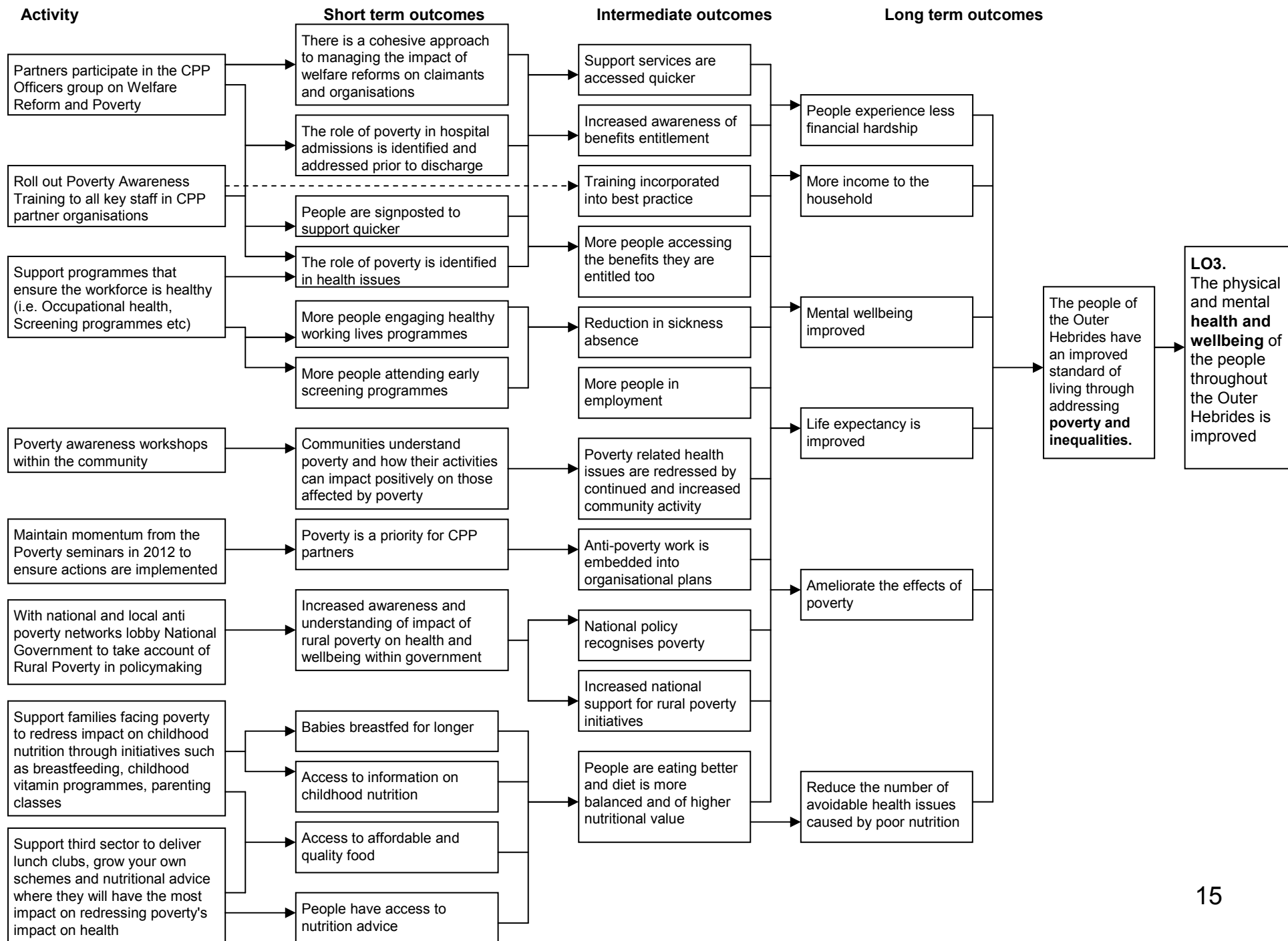




**LO3.**  
The physical and mental **health and wellbeing** of the people throughout the Outer Hebrides is improved



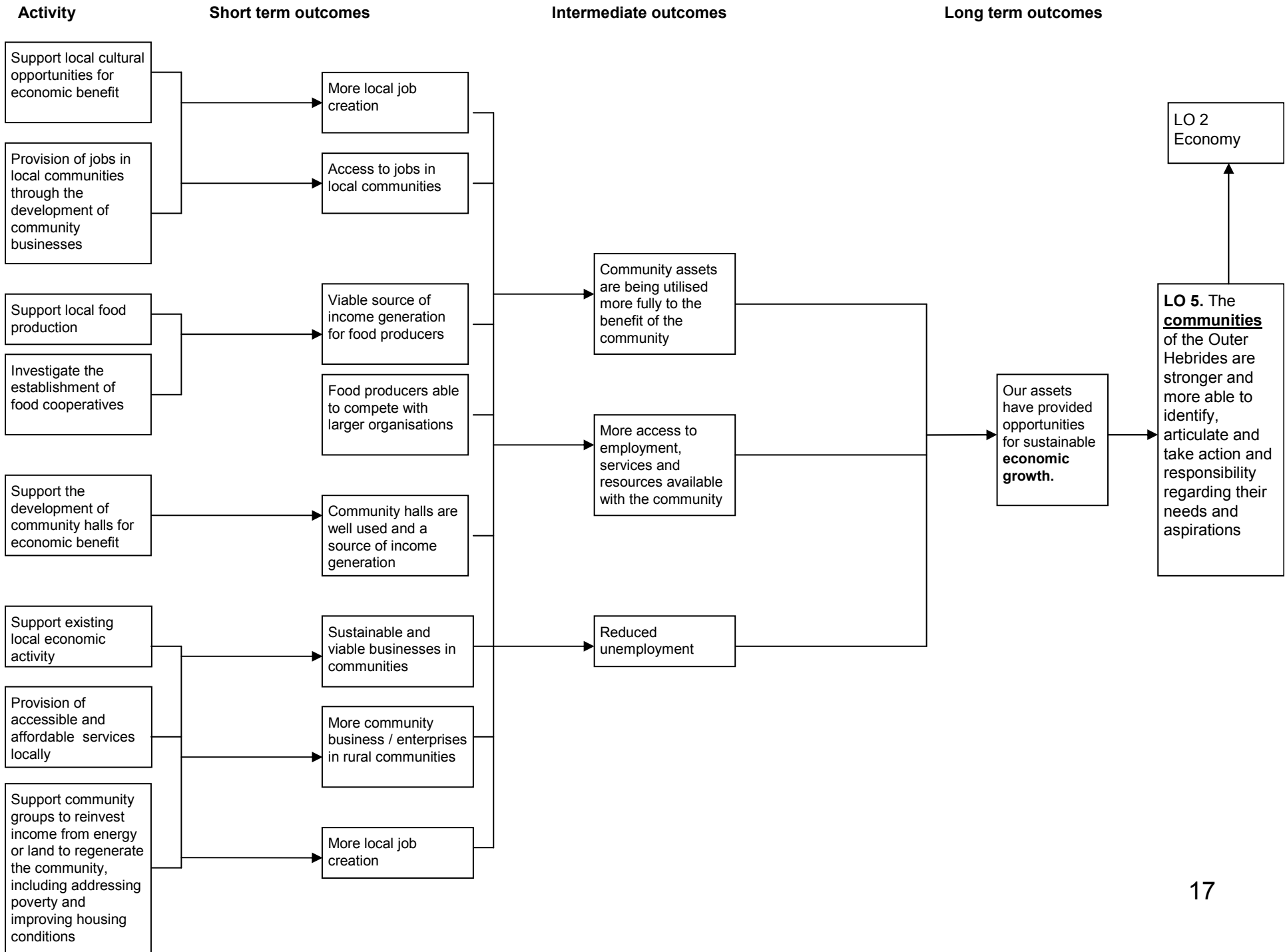


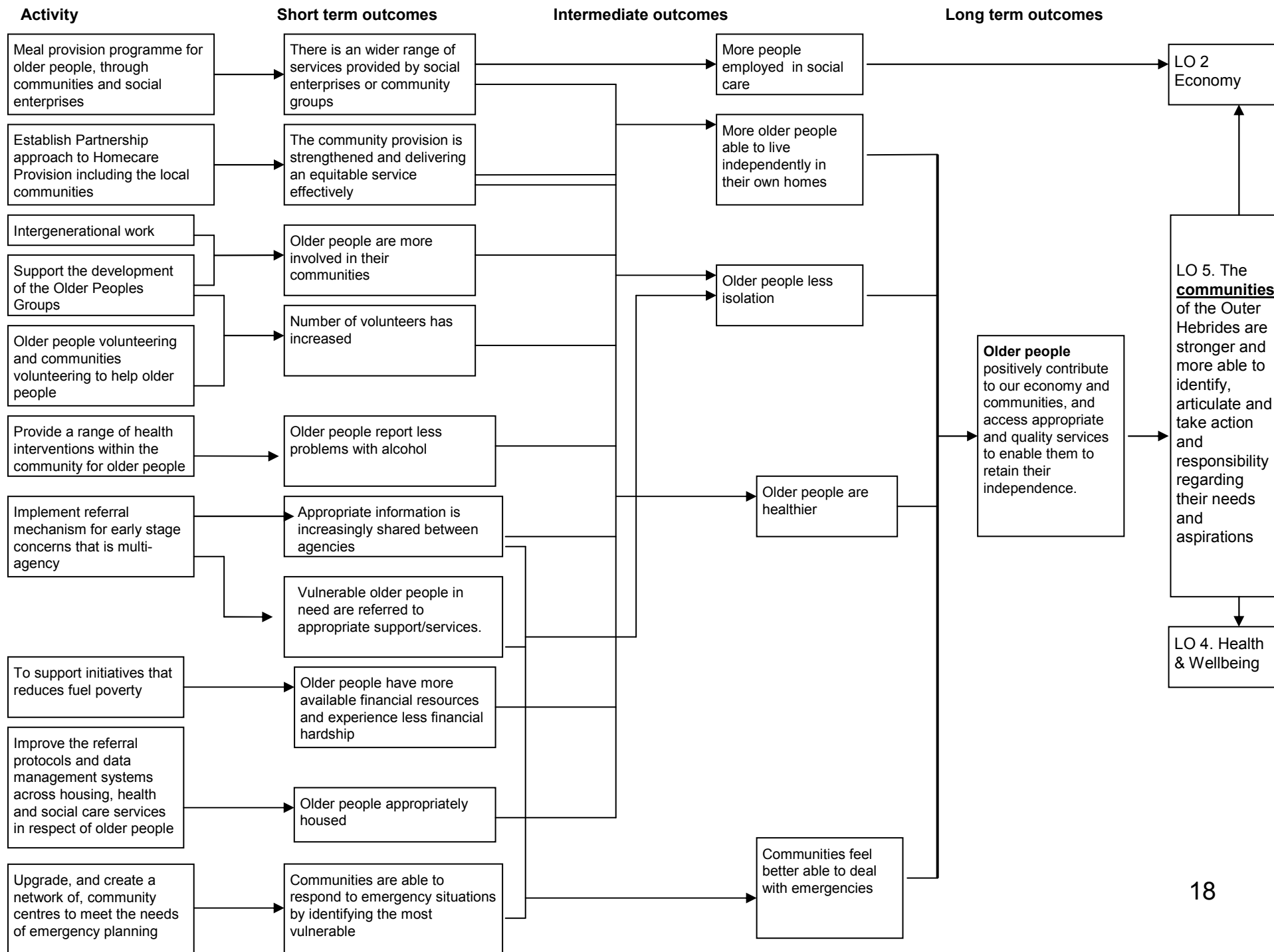


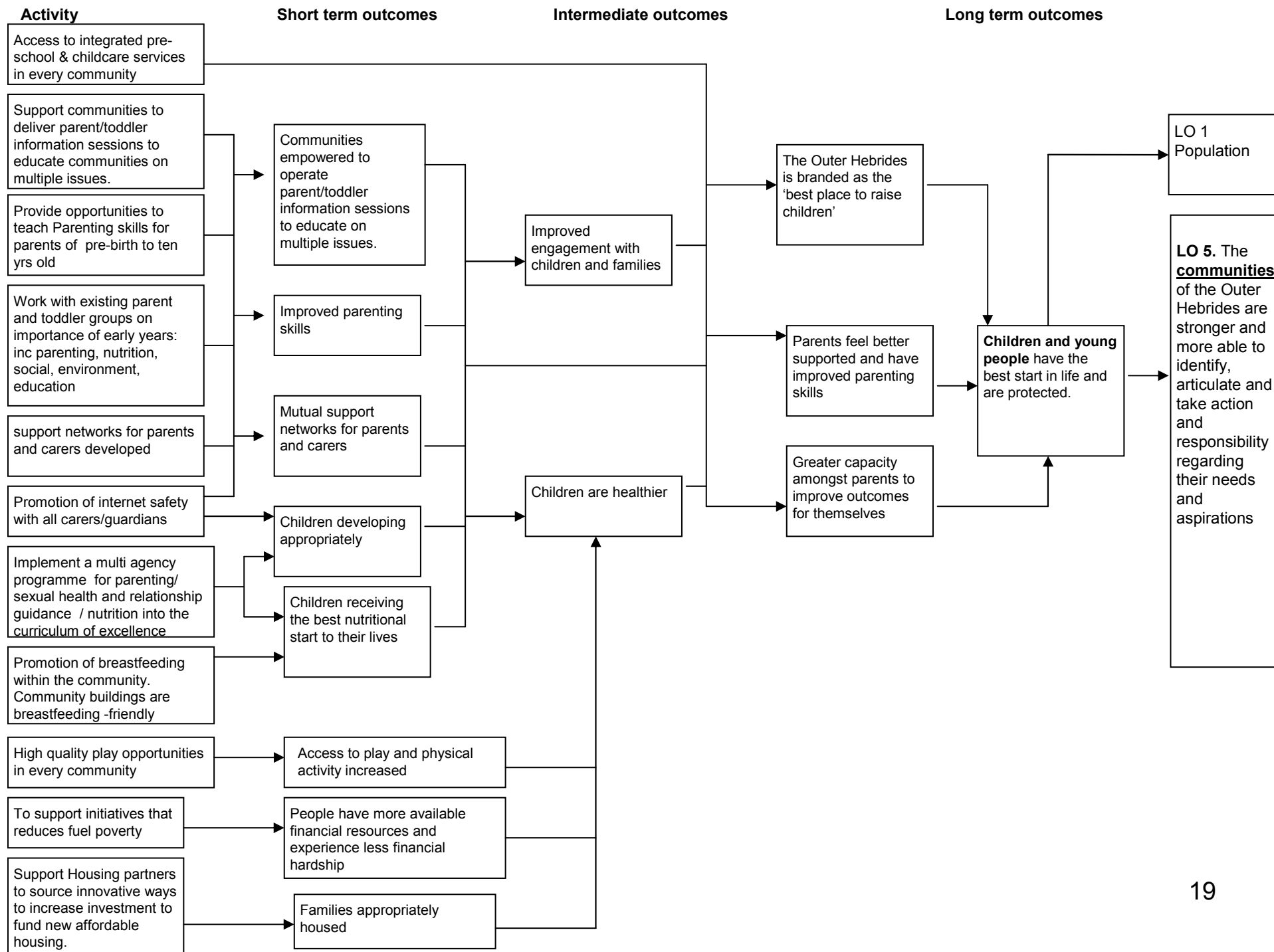
# SOA Logic Models: Communities

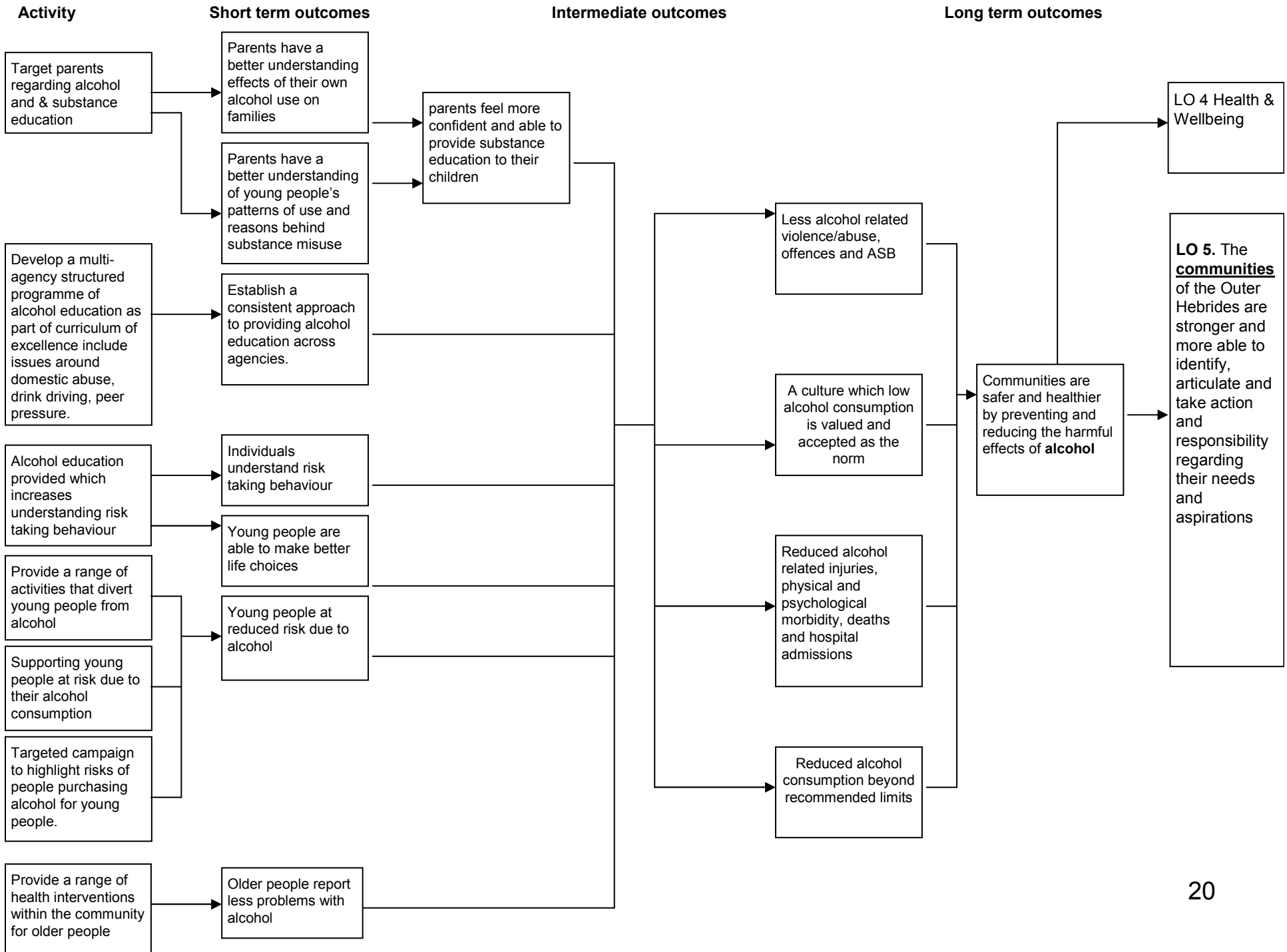


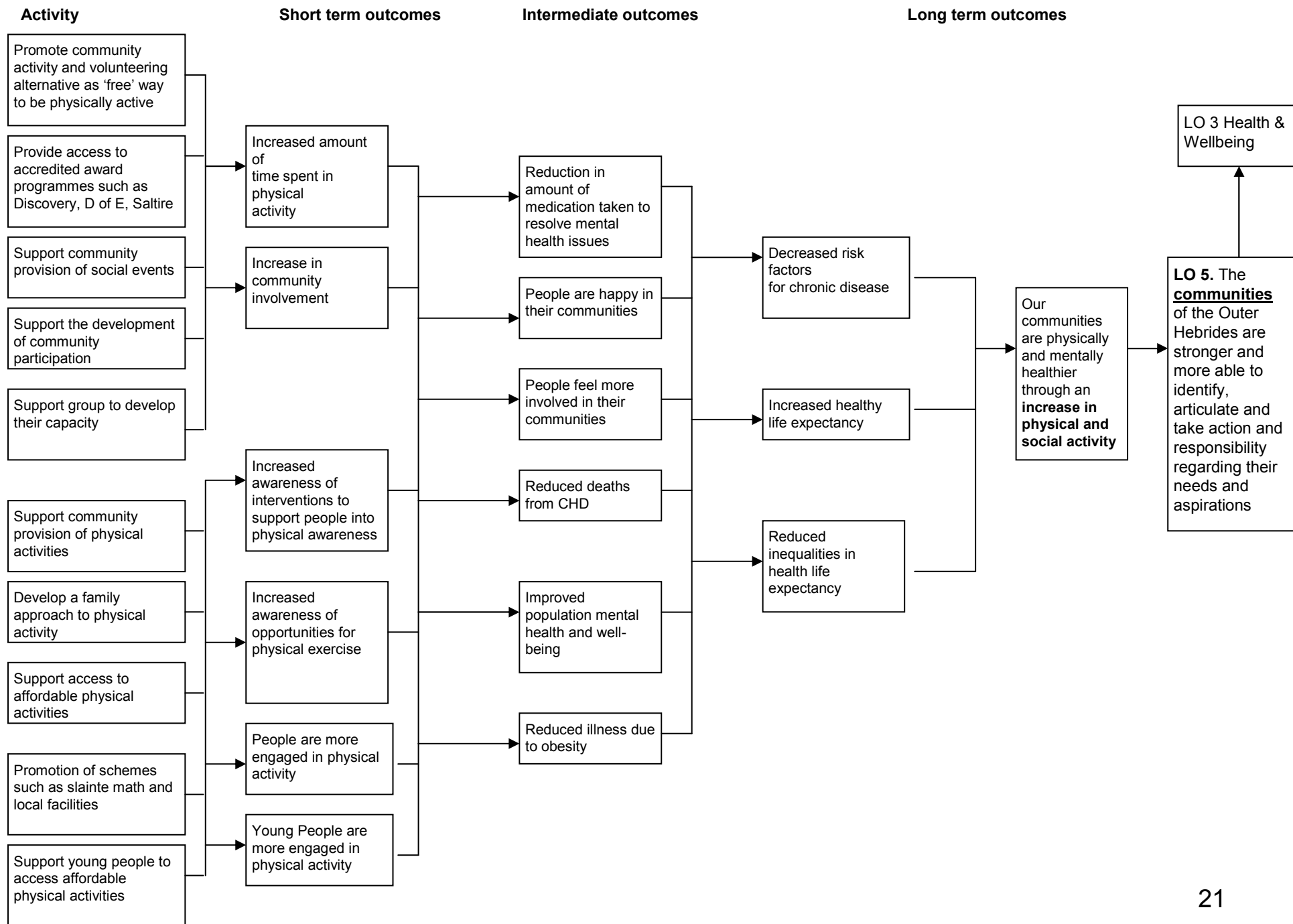


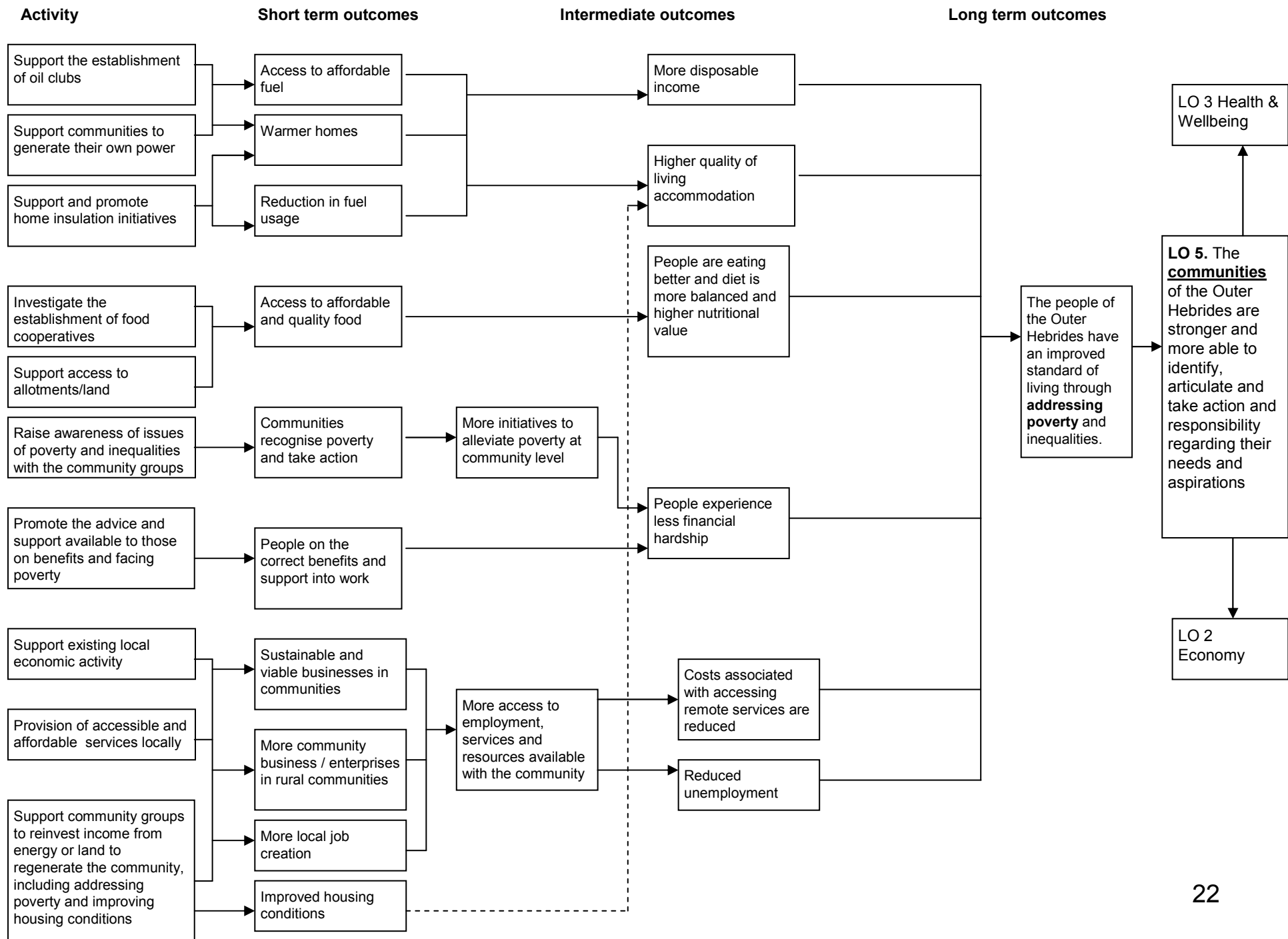












# SOA Logic Models: Natural and Cultural Resources



