

Spiorad na Mara Offshore Wind Farm

Notice to Mariners

NtM Number NtM 002_v06

Spiorad na Mara Windfarm/Floating LiDAR and Wave Buoy Service and Seabed Mooring Recovery

Date of Issue

29/07/2024

1 Planned Activity

Partrac Ltd. Has inspected and serviced the metocean equipment seabed mooring within the Spiorad na Mara offshore wind farm site using the vessel Mar Fortune (Section 5)

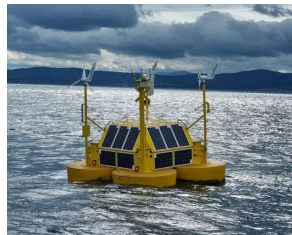
Positions of all equipment are illustrated in Figure 1 and coordinates listed in Table 1 with new as-laid position **highlighted**.

Equipment positions will be updated in a further notice after the operations have been completed.

Floating LiDAR Buoy

The buoy has dimensions of 4m x 4m, the tallest mast on the buoy sits approx. 4m above the water line.

Yellow in colour
Fl (5) Y 20s light



Wave Buoy

The two wavebuoys deployed (Figure 1) are yellow spherical buoys, each measuring 1.1 m diameter.

Fl (5) Y 20s light



2 Geographic co-ordinates and chart of survey area

All positions quoted in WGS84: latitude /longitude (in degrees decimal minutes)

See attached figure and list of coordinates.

3 Safe clearances, navigation safety features and safety notes for mariners

All vessels are requested to always maintain a safe distance (500 m) around the buoys.

4 Outline programme of works

Estimated Start Date: **22/07/2024**

Estimated Completion Date: **22/07/2024**

5 Vessel details

Vessel Name:	Mar Fortune
Vessel Type / LOA(m):	Multi Use Vessel
VHF Call Sign:	LEZ1
MMSI:	257011630
Vessel Operator Contact:	+44 (0)1626 906 673 or +44 (0) 1626 906 673


6 Project Contact Details

Company Fisheries Liaison Officer: Richard Joseph (ERM) Email: richard.joseph@erm.com Telephone: 07944 981839	Fishing Industry representative: Calum Macleod (FIR) Email: calumsiarach@hotmail.com Telephone: 07814 447081
---	--

Figure 1: Proposed Spiorad na Mara Array Area, Wave Buoy and FLiDAR Positions

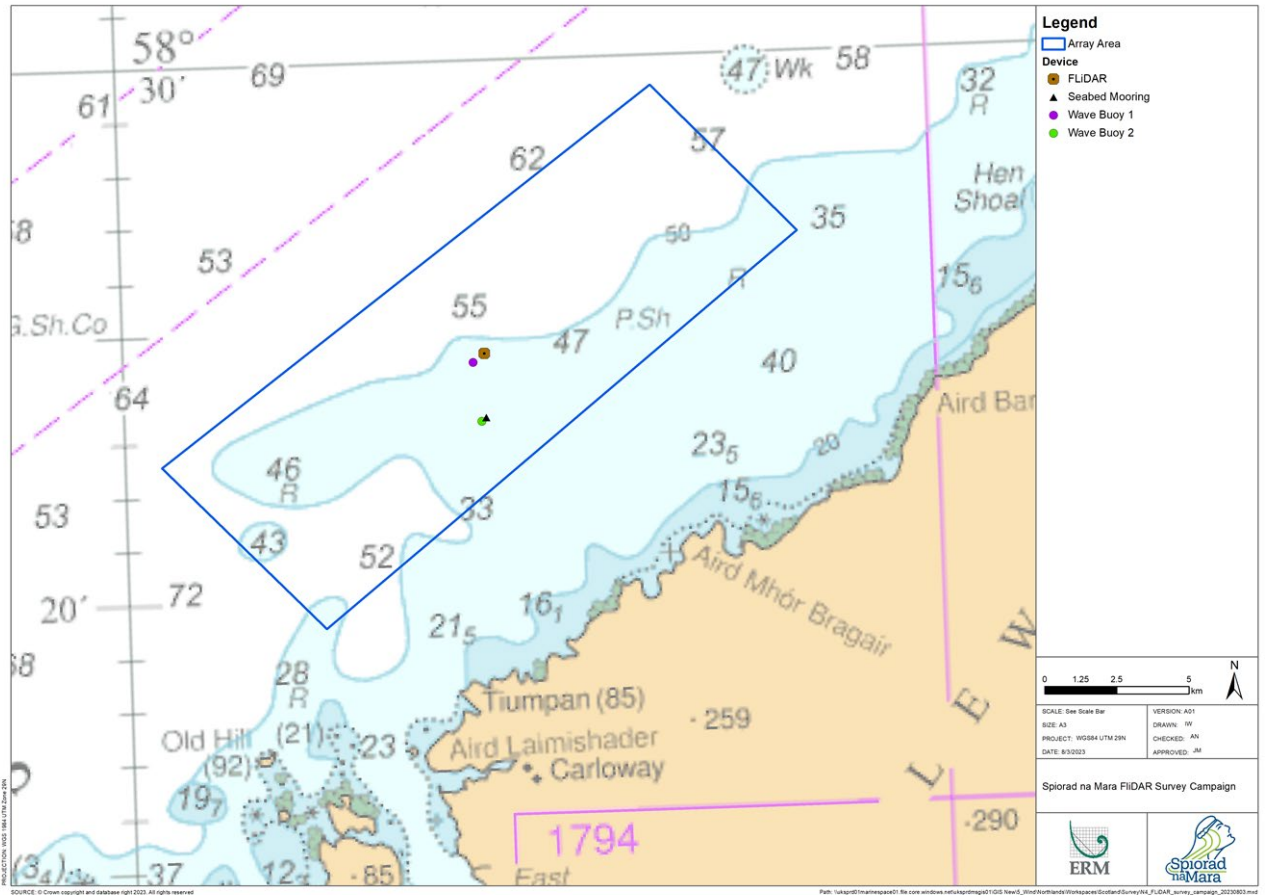


Table 1: Equipment Positions

Equipment	Latitude (WGS 84)	Longitude (WGS 84)
FLiDAR	58° 24.540' N	6° 47.100' W
Wave Buoy 1	58° 24.377' N	6° 47.510' W
Wave Buoy 2	58° 23.276' N	6° 47.264' W
Seabed Mooring to be recovered	58° 23.340' N	6° 47.100' W
Seabed Mooring inspected as-laid position	58° 23.360' N	6° 47.390' W