

Notice to Mariners

Vessels and General Safety Advice

Scottish Hydro Electric Power Distribution (SHEPD) Skye to South Uist Marine Surveys

Date of issue: 13/07/2024

This Notice to Mariners supersedes that issued on 26th June 2024. Due to vessel turning requirements the operational corridor has been increased in certain locations. This NtM reflects these changes.

Please be advised that A-2-Sea Solutions Ltd (on behalf of SHEPD) are undertaking a marine survey within the cable corridors described below. Surveys will utilise two vessels to complete survey operations:

- Mintaka 1
- FPV Morven

Offshore operations have commenced and have a planned minimum duration of 50.5 days, weather permitting. Nearshore operations will have a planned minimum duration of 27 days, weather permitting.

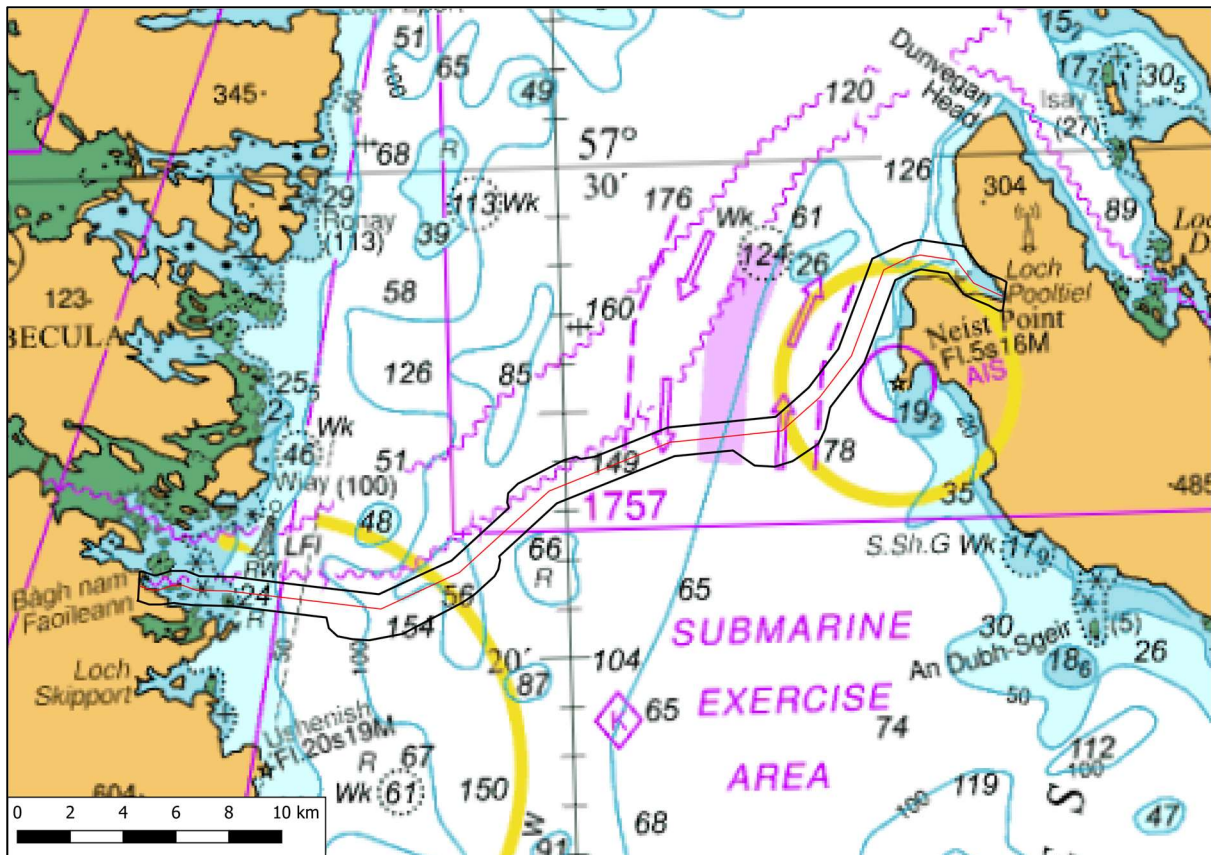


Figure 1: Survey Area Skye to Loch Carnan on South Uist Survey Corridor

The Skye to Loch Carnan on South Uist operations will be concentrated across the cable corridor within the boundary defined by the following coordinates.

Table 1: Survey Area Skye to Loch Carnan on South Uist Survey Corridor

Survey Area Skye to Loch Carnan on South Uist 1100m Survey Corridor			
Point	Datum	Latitude D D.M	Longitude D D.M
1	WGS84	57;21.40954N	007;16.24761W
2	WGS84	57;21.40648N	007;16.23198W
3	WGS84	57;21.40648N	007;16.23198W
4	WGS84	57;21.99808N	007;16.14212W
5	WGS84	57;21.99648N	007;16.02527W
6	WGS84	57;21.9639N	007;15.8587W
7	WGS84	57;21.3253N	007;15.81692W
8	WGS84	57;21.32331N	007;15.67226W
9	WGS84	57;21.91545N	007;15.61095W
10	WGS84	57;21.914N	007;15.50589W
11	WGS84	57;21.31905N	007;15.36495W
12	WGS84	57;21.99697N	007;14.97229W
13	WGS84	57;21.34403N	007;14.87649W
14	WGS84	57;21.31995N	007;14.6254W
15	WGS84	57;21.98892N	007;14.39487W
16	WGS84	57;21.28822N	007;14.13889W
17	WGS84	57;21.87512N	007;13.89228W
18	WGS84	57;21.25389N	007;12.86579W
19	WGS84	57;21.84629N	007;12.82396W
20	WGS84	57;21.2519N	007;12.72571W
21	WGS84	57;21.84353N	007;12.6298W
22	WGS84	57;21.12646N	007;11.17614W
23	WGS84	57;21.71279N	007;11.01465W
24	WGS84	57;20.99747N	007;9.56277W
25	WGS84	57;21.58407N	007;9.40471W
26	WGS84	57;20.9652N	007;9.14592W
27	WGS84	57;20.74644N	007;9.06683W
28	WGS84	57;20.57711N	007;8.74706W
29	WGS84	57;20.50977N	007;8.19382W
30	WGS84	57;20.47723N	007;7.56152W
31	WGS84	57;21.40882N	007;7.14423W
32	WGS84	57;20.58932N	007;6.28667W

Survey Area Skye to Loch Carnan on South Uist 1100m Survey Corridor			
Point	Datum	Latitude D D.M	Longitude D D.M
33	WGS84	57;21.75886N	007;5.64701W
34	WGS84	57;22.05171N	007;4.3708W
35	WGS84	57;21.18521N	007;4.02868W
36	WGS84	57;21.34504N	007;3.54909W
37	WGS84	57;21.70846N	007;2.76349W
38	WGS84	57;21.84503N	007;2.61341W
39	WGS84	57;22.112N	007;2.56736W
40	WGS84	57;22.03932N	007;2.53522W
41	WGS84	57;23.2021N	007;2.20767W
42	WGS84	57;23.39278N	007;2.15839W
43	WGS84	57;23.09514N	007;2.14275W
44	WGS84	57;23.58124N	007;1.77766W
45	WGS84	57;23.15829N	007;0.33115W
46	WGS84	57;24.0339N	007;0.00884W
47	WGS84	57;24.09134N	006;59.54504W
48	WGS84	57;24.04678N	006;59.37941W
49	WGS84	57;24.08059N	006;58.85932W
50	WGS84	57;24.6307N	006;56.07178W
51	WGS84	57;24.04516N	006;55.84088W
52	WGS84	57;24.6441N	006;55.71385W
53	WGS84	57;24.0527N	006;55.63943W
54	WGS84	57;24.71613N	006;53.70077W
55	WGS84	57;24.12477N	006;53.62533W
56	WGS84	57;24.00716N	006;53.33269W
57	WGS84	57;23.80374N	006;52.82668W
58	WGS84	57;23.76775N	006;52.06637W
59	WGS84	57;24.7827N	006;51.97405W
60	WGS84	57;23.86936N	006;51.3838W
61	WGS84	57;25.35758N	006;50.68857W
62	WGS84	57;24.20487N	006;50.39314W
63	WGS84	57;24.49854N	006;50.11726W
64	WGS84	57;24.77919N	006;49.98152W
65	WGS84	57;24.93767N	006;49.90595W
66	WGS84	57;26.1252N	006;49.52279W
67	WGS84	57;25.8176N	006;48.56925W
68	WGS84	57;27.93687N	006;48.1353W
69	WGS84	57;27.48802N	006;47.28936W
70	WGS84	57;28.21924N	006;46.92074W
71	WGS84	57;27.65387N	006;46.5759W
72	WGS84	57;28.28684N	006;46.37976W
73	WGS84	57;27.68814N	006;46.30165W

Survey Area Skye to Loch Carnan on South Uist 1100m Survey Corridor			
Point	Datum	Latitude D D.M	Longitude D D.M
74	WGS84	57;28.28437N	006;46.23995W
75	WGS84	57;27.58974N	006;45.2841W
76	WGS84	57;27.39824N	006;45.04119W
77	WGS84	57;27.15454N	006;44.72495W
78	WGS84	57;28.12975N	006;44.64157W
79	WGS84	57;27.96655N	006;44.42975W
80	WGS84	57;27.05184N	006;44.37359W
81	WGS84	57;27.73532N	006;44.13653W
82	WGS84	57;27.60888N	006;43.97249W
83	WGS84	57;27.58319N	006;43.88462W
84	WGS84	57;26.90788N	006;43.78188W
85	WGS84	57;26.84986N	006;43.60736W
86	WGS84	57;26.79652N	006;43.425W
87	WGS84	57;26.79367N	006;43.26739W
88	WGS84	57;27.43241N	006;43.26492W
89	WGS84	57;27.37291N	006;43.08595W

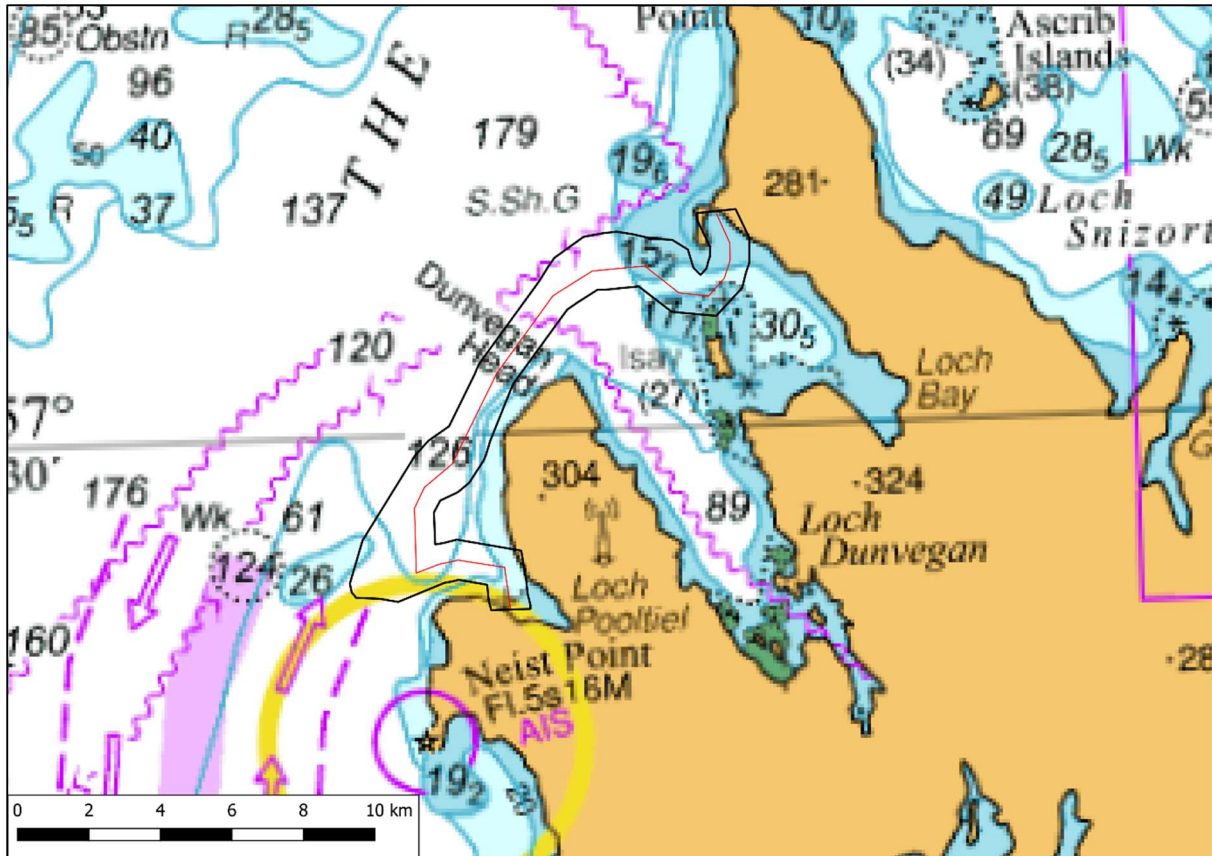


Figure 2: Survey Corridor Ardmore on Skye to Loch Pooltiel also on Skye

The Ardmore on Skye to Loch Pooltiel on Skye operations will be concentrated across the cable corridor within the boundary defined by the following coordinates.



Table 2: Survey Route Ardmore on Skye to Loch Pooltiel also on Skye

Survey Route Ardmore on Skye to Loch Pooltiel also on Skye 1100m Survey Corridor					
Point	Datum	Latitude	D D.M	Longitude	D D.M
1	WGS84	57;0.45839N		006;0.79979W	
2	WGS84	57;0.45934N		006;0.80856W	
3	WGS84	57;0.46303N		006;0.7748W	
4	WGS84	57;0.46281N		006;0.77786W	
5	WGS84	57;0.46339N		006;0.82201W	
6	WGS84	57;0.47408N		006;0.81548W	
7	WGS84	57;0.45974N		006;0.81928W	
8	WGS84	57;0.46119N		006;0.82134W	
9	WGS84	57;0.50202N		006;0.77339W	
10	WGS84	57;0.51471N		006;0.76083W	
11	WGS84	57;0.4949N		006;0.78979W	

Survey Route Ardmore on Skye to Loch Pooltiel also on Skye 1100m Survey Corridor					
Point	Datum	Latitude	D D.M	Longitude	D D.M
12	WGS84	57;0.49856N		006;0.78328W	
13	WGS84	57;0.54093N		006;0.72505W	
14	WGS84	57;0.54336N		006;0.72171W	
15	WGS84	57;0.5174N		006;0.75849W	
16	WGS84	57;0.53766N		006;0.7291W	
17	WGS84	57;0.54941N		006;0.69218W	
18	WGS84	57;0.54863N		006;0.68477W	
19	WGS84	57;0.54838N		006;0.70776W	
20	WGS84	57;0.54914N		006;0.69858W	
21	WGS84	57;0.54432N		006;0.65921W	
22	WGS84	57;0.53973N		006;0.65695W	
23	WGS84	57;0.54739N		006;0.67588W	
24	WGS84	57;0.54687N		006;0.66634W	
25	WGS84	57;0.54103N		006;0.64998W	
26	WGS84	57;0.54243N		006;0.64901W	
27	WGS84	57;0.53785N		006;0.65373W	
28	WGS84	57;0.53941N		006;0.65084W	
29	WGS84	57;0.55194N		006;0.65463W	
30	WGS84	57;0.55339N		006;0.65454W	
31	WGS84	57;0.54329N		006;0.64896W	
32	WGS84	57;0.54483N		006;0.64886W	
33	WGS84	57;0.54295N		006;0.6306W	
34	WGS84	57;0.54049N		006;0.63076W	
35	WGS84	57;0.55406N		006;0.6363W	
36	WGS84	57;0.54673N		006;0.63035W	
37	WGS84	57;0.52744N		006;0.64707W	
38	WGS84	57;0.52884N		006;0.66776W	
39	WGS84	57;0.53794N		006;0.63252W	
40	WGS84	57;0.53425N		006;0.63448W	
41	WGS84	57;0.53539N		006;0.68589W	
42	WGS84	57;0.53494N		006;0.69872W	
43	WGS84	57;0.53323N		006;0.67765W	
44	WGS84	57;0.53549N		006;0.68271W	
45	WGS84	57;0.53027N		006;0.71652W	
46	WGS84	57;0.5122N		006;0.74275W	
47	WGS84	57;0.535N		006;0.70208W	
48	WGS84	57;0.53198N		006;0.71161W	
49	WGS84	57;0.4944N		006;0.75673W	
50	WGS84	57;0.49314N		006;0.75785W	
51	WGS84	57;0.51029N		006;0.74441W	
52	WGS84	57;0.49803N		006;0.75444W	

Survey Route Ardmore on Skye to Loch Pooltiel also on Skye 1100m Survey Corridor			
Point	Datum	Latitude D D.M	Longitude D D.M
53	WGS84	57;0.48347N	006;0.77865W
54	WGS84	57;0.48053N	006;0.7818W
55	WGS84	57;0.48769N	006;0.76487W
56	WGS84	57;0.48538N	006;0.77042W
57	WGS84	57;0.47352N	006;0.77144W
58	WGS84	57;0.47023N	006;0.74167W
59	WGS84	57;0.4725N	006;0.78168W
60	WGS84	57;0.47277N	006;0.77795W
61	WGS84	57;0.45842N	006;0.73901W
62	WGS84	57;0.45648N	006;0.73824W
63	WGS84	57;0.46257N	006;0.73979W
64	WGS84	57;0.45941N	006;0.7394W
65	WGS84	57;0.45554N	006;0.73829W
66	WGS84	57;0.45556N	006;0.75661W
67	WGS84	57;0.45634N	006;0.75693W
68	WGS84	57;0.45554N	006;0.73829W
69	WGS84	57;0.46197N	006;0.75813W
70	WGS84	57;0.46343N	006;0.77135W
71	WGS84	57;0.45804N	006;0.7576W
72	WGS84	57;0.46159N	006;0.75804W

The operations will be undertaken by the vessels Mintaka 1 and FPV Morven pictured below. The vessels may not commence their activities at the same time but may operate simultaneously at times over the duration of the operation. The vessels may operate primarily from [Mallaig] but may use other ports along the coastlines, such as [Ullapool] or [Stornoway].

Vessel Photo	Vessel Description
<p>Mintaka</p>  <p>The image shows the Mintaka 1, a blue and yellow survey vessel, at sea. It has a white cabin and a large yellow crane-like structure on the deck. The name 'MINTAKA 1' is visible on the side.</p>	<p>The Mintaka 1 is a multi-purpose survey vessel. 40 m in length with a beam of 6m and a draft of 2 m; transit speed of 12 kts and a survey speed of 4-6 kts. Operating on a 24-hour basis. Mintaka call sign is HO6142.</p> <p>Contact: Vsat +31 223705008 / Mob: +48 602421456</p>
<p>FPV Morven</p>  <p>The image shows the FPV Morven, a white survey vessel, at sea. It has a black hull and a white cabin. The text 'A-2-SEA SURVEY' is visible on the side of the cabin. The name 'FPV MORVEN' is visible on the hull.</p>	<p>The FPV Morven is a multi-purpose survey vessel. 20 m in length with a beam of 6m and a draft of 2 m; transit speed of 12 kts and a survey speed of 4-6 kts. Operating on a 24-hour basis. FPV Morven call sign is MBFQ6.</p> <p>Contact: 07723075399 / 07956319281</p>

Survey Description

The survey will involve collection of high-resolution geophysical seabed data and In-situ geotechnical sediment testing.

Other vessels should maintain an appropriate and safe distance of 500 m when passing the Mintaka 1 and FPV Morven vessel(s) whilst undertaking operations and should pass at the lowest possible speed to avoid vessel wash effects. The vessel(s) will be working 24-hour operations and will display appropriate day shapes and lights during reduced visibility and night operations. The vessel(s) will also monitor VHF Channels 16 and 12.

Primary Survey Equipment

Primary equipment	Towed, Hull mounted, Sampling	Approximate tow length (if applicable)	Vessel
Multibeam Echosounder	Hull mounted	N/A	Mintaka, Morven
Sidescan Sonar	Towed	50-600m	Mintaka, Morven
Magnetometer Array	Towed	50-600m	Mintaka, Morven
Sub bottom Profiler	Hull mounted	N/A	Mintaka, Morven
Grab sampler	Sampling	N/A	Mintaka
Drop Down Video	Towed	50-100m	Mintaka
CPT	Sampling	N/A	Mintaka
Vibrocore	Sampling	N/A	Mintaka

Contact Details

The vessel contact details are given in the tables below

VESSEL 1- Mintaka	
Call sign	HO6142
Bridge	Telephone Number: +31 (0) 223 705 008 (Sat)
Offshore manager / Party Chief	Ellie Roberts
Email	Gavin.loveridge@a2sea.co.uk
Onshore Site Manager	Gavin Loveridge

VESSEL 2- FPV Morven	
Call sign	MBFQ6
Bridge	+44 (0) 7723 075 399 (vessel) +44 (0) 7956 319 281 (vessel)
Offshore manager / Party Chief	Thomas Maw
Email	Gavin.loveridge@a2sea.co.uk
Onshore Site Manager	Gavin Loveridge

Fisheries Liaison Officers

Fishing liaison for the operations will be co-ordinated by Blackhall & Powis Ltd. For any commercial fishery queries please contact the Company Fishing Liaison Officers (CFLOs) :

Tommy Finn 07787 503119 tommy.finn@blackhallpowis.com

Eva Purfit 07827 627464 eva.purfit@blackhallpowis.com (Marine & Fisheries Co-Ordinator)

The local Fishing Industries Representative (FIR) will also be in place to liaise with the vessels and fishing operations in the survey area.

Ewen Grant 07990 506846 ewen@ewengrant.com

Further Details

Further enquiries should be addressed to the following people in the following order:

Name	Contact Number	Email
Christopher Briggs	+44(0) 1794 830 909 (Office)	Chris.briggs@a2sea.co.uk
Liam Flynn	+44(0) 1794 830 909 (Office)	Liam.flynn@a2sea.co.uk

Distribution List

Any stakeholders identified within the relevant Fishing Liaison Management Action Plan (FLMAP), will be included on the distribution list for this NtM.

Legal Notice

Please be advised that this Notice to Mariners should be treated as official notice of the nature, duration and location of the works which are scheduled to take place. During the period of this notice, we request that you plan your activities around our short-term, temporary activities.

Any failure to remove equipment or entry into the identified location in a manner that would constitute a hazard would be a breach of your duties of safe seamanship as described in the Convention on International Regulations for Preventing Collisions at Sea 1972 and/or the Merchant Shipping Act 1995 and may result in removal of the relevant equipment. Failure to remove equipment or entry into the identified location in a manner that would constitute a hazard may constitute a breach of duty of care at common law, and a failure to protect submarine cables for successful seabed user co-existence under Scotland's National Marine Plan.