

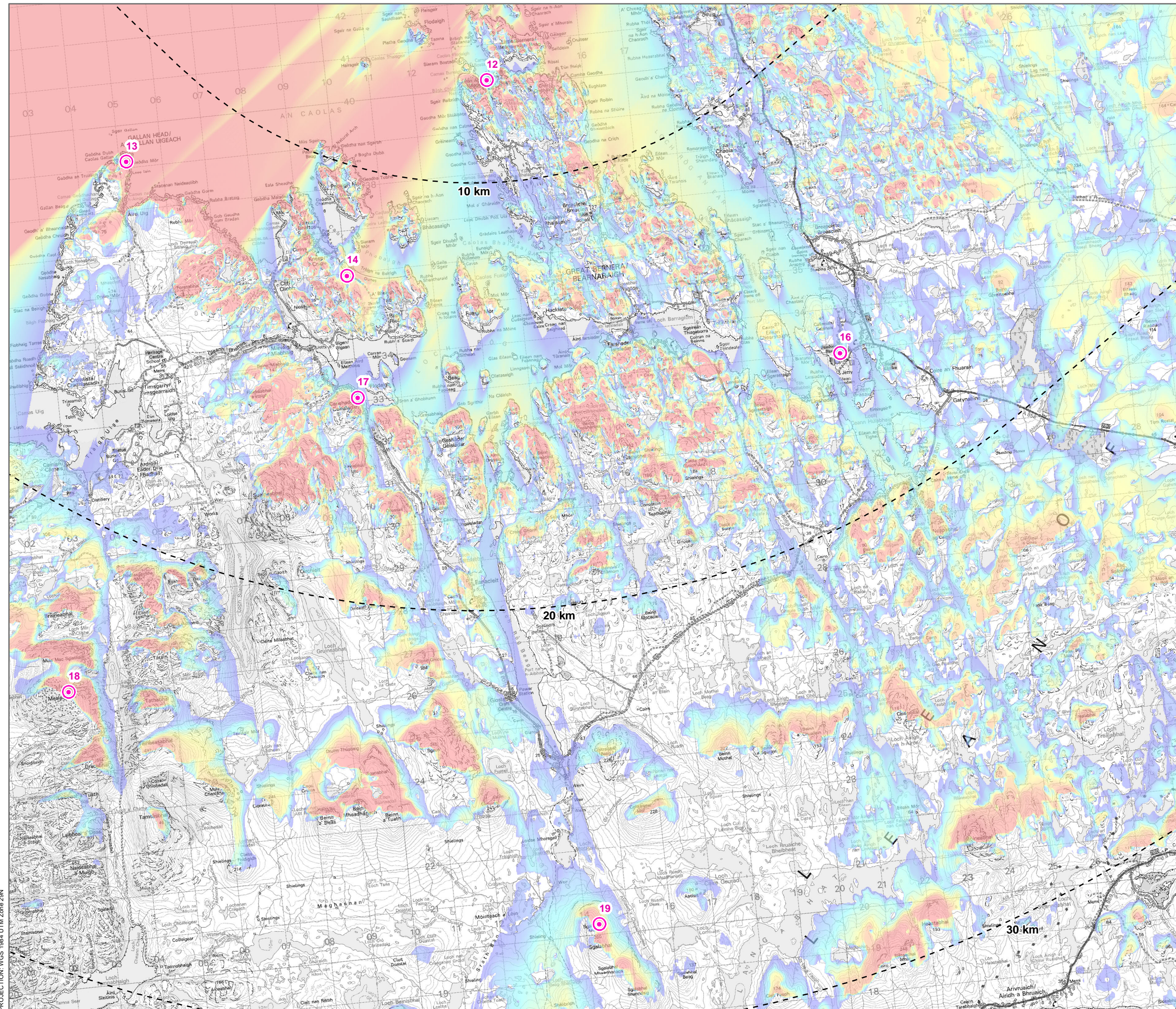


Spiorad na Mara Offshore Windfarm

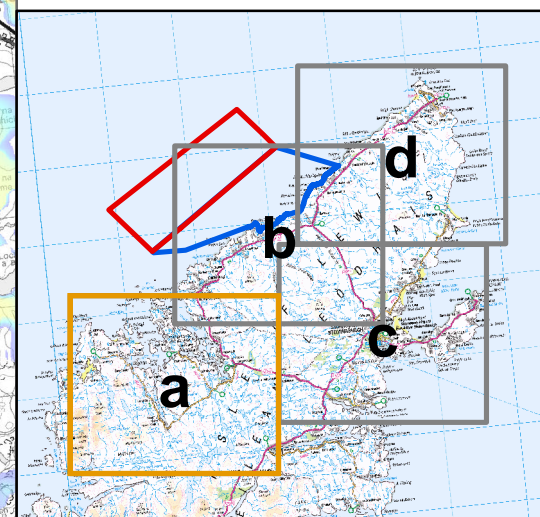
Appendix A - Blade tip ZTV with Key Visual Receptors and Proposed Viewpoints (A3 extracts with 1:50,000 Ordnance Survey base mapping)

Date: 9/25/2023

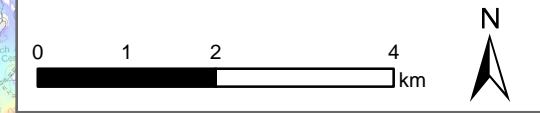




- ### Legend
- Array Area
 - Offshore Cable Corridor Area of Search
 - 10km Radii
 - 60km Study Area
 - Blade Tip Zone of Theoretical Visibility
 - Higher Theoretical Visibility
 - Lower Theoretical Visibility
 - Viewpoint
 - 12. Bosta
 - 13. Gallan Head
 - 14. Reef Beach
 - 16. Callanish Standing Stones
 - 17. Cairisiadar
 - 18. Mealaisbhal
 - 19. Sgalabhal

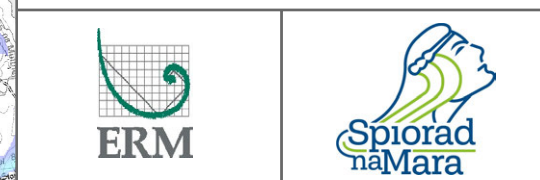


Blade tip:	380m above MSL	Observer height:	2m
DTM:	OS T5 DTM	Surface features:	Excluded
DTM resolution:	10m	Earth curvature:	Included

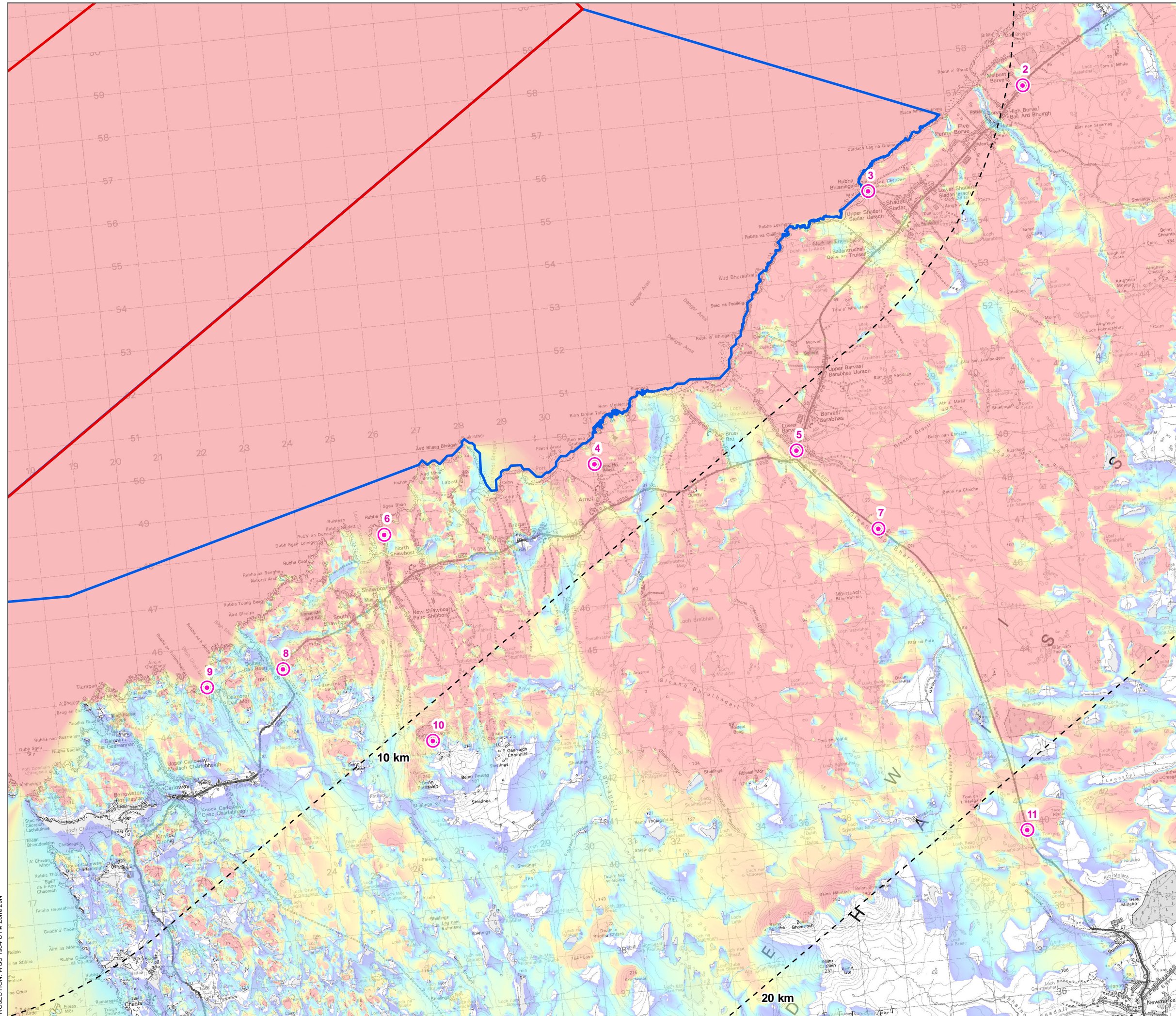


SCALE: See Scale Bar	VERSION: A01
SIZE: A3	DRAWN: NL
PROJECT: WGS84 UTM 29N	CHECKED: HB
DATE: 18/07/2023	APPROVED:

Figure 6.5a
Blade tip Zone of Theoretical Visibility (ZTV)
with Proposed Viewpoints

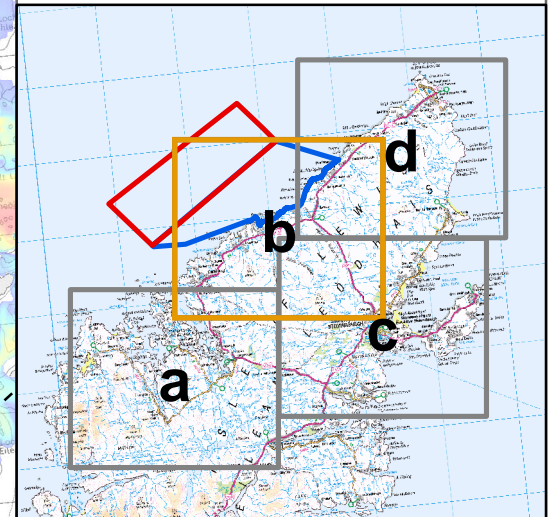


PROJECTION: WGS 1984 UTM Zone 29N

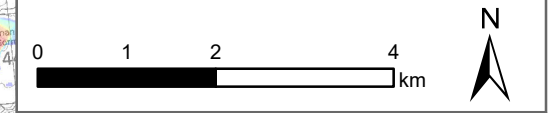


Legend

- Array Area
- Offshore Cable Corridor Area of Search
- 10km Radii
- 60km Study Area
- Blade Tip Zone of Theoretical Visibility
 - Higher Theoretical Visibility
 - Lower Theoretical Visibility
- Viewpoint
 - 2. A857 at turnoff to Melbost Borve
 - 3. Shader/Core Path 1
 - 4. Arnol/Blackhouse
 - 5. A857 near junction with
 - 6. Shawbost/Core Path 3
 - 7. A857 – inland
 - 8. A858 near turn-off to Dalbeg
 - 9. Dalmore Beach/Core Path
 - 10. Beinn Bhagair
 - 11. A857 - south

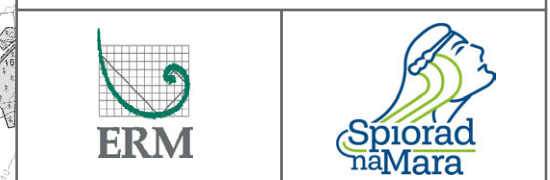


Blade tip:	380m above MSL	Observer height:	2m
DTM:	OS T5 DTM	Surface features:	Excluded
DTM resolution:	10m	Earth curvature:	Included

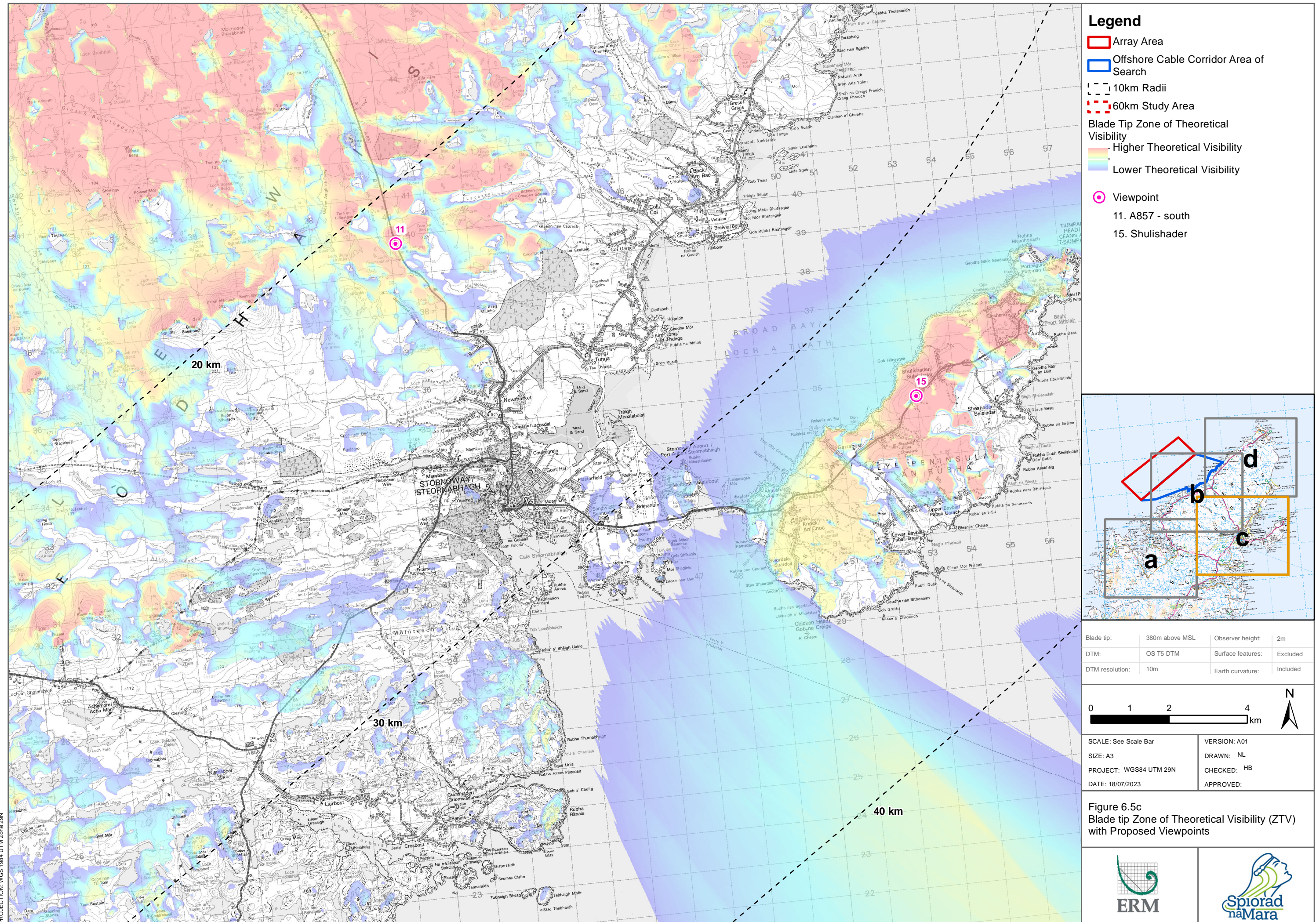


SCALE: See Scale Bar	VERSION: A01
SIZE: A3	DRAWN: NL
PROJECT: WGS84 UTM 29N	CHECKED: HB
DATE: 18/07/2023	APPROVED:

Figure 6.5b
Blade tip Zone of Theoretical Visibility (ZTV) with Proposed Viewpoints



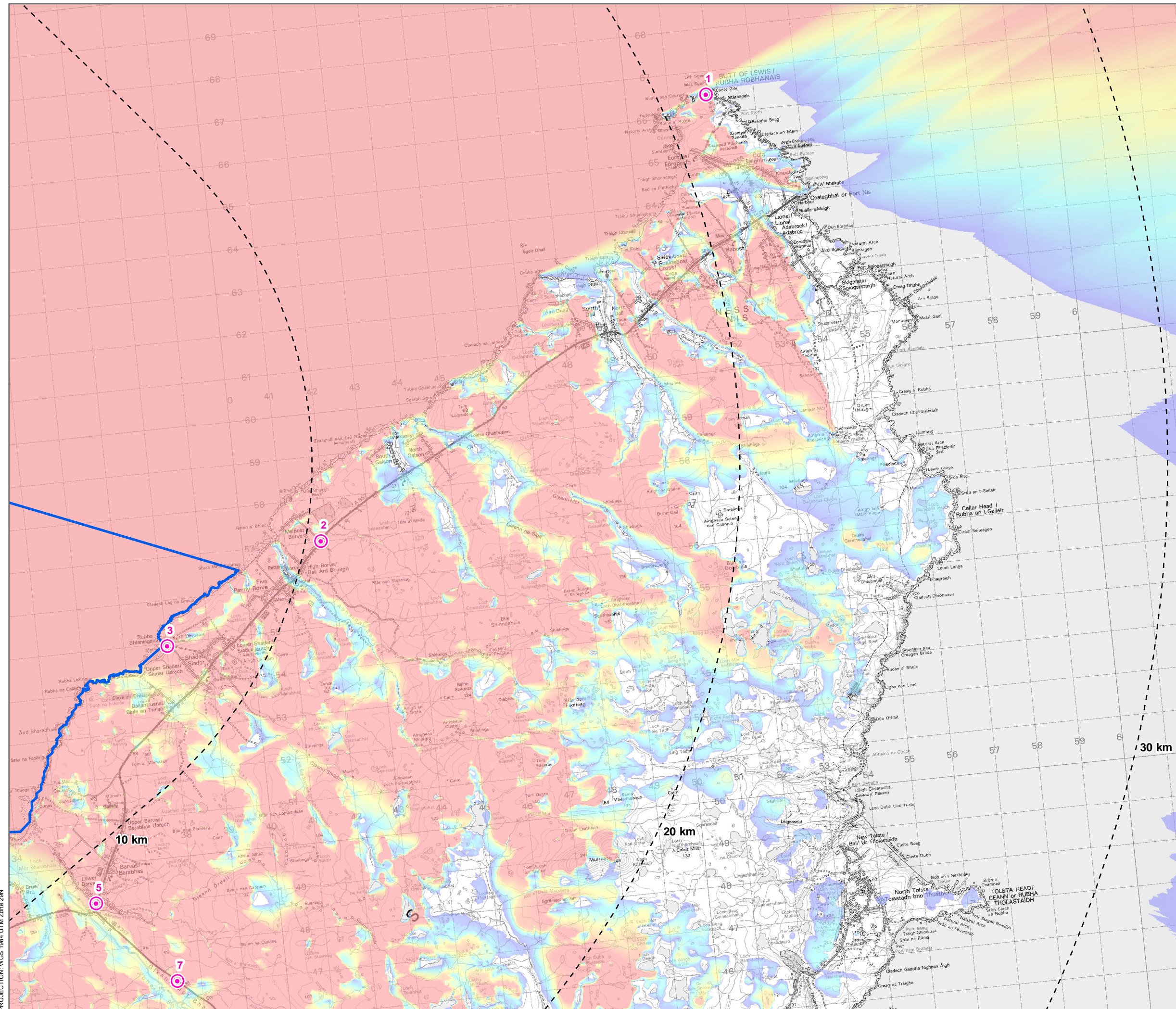
PROJECTION: WGS 1984 UTM Zone 29N



PROJECTION: WGS 1984 UTM Zone 29N

SOURCE: Contains OS data © Crown copyright and database right (2023) Ordnance Survey 0100031673. Contains public sector information licensed under the Open Government Licence v3.0.

Path: P:\2022\21809_Spiorad\GIS\221809_NP\SCOPING\OFFSHORE\221809_NP_6.6_VPs_ZTV_Zoomed.mxd



Legend

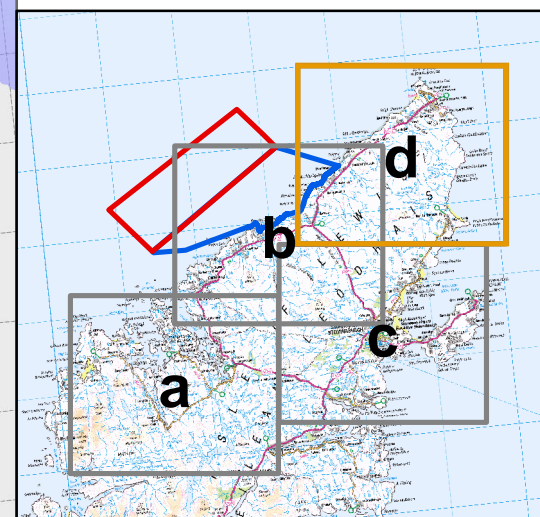
- Array Area
- Offshore Cable Corridor Area of Search
- 10km Radii
- 60km Study Area

Blade Tip Zone of Theoretical Visibility

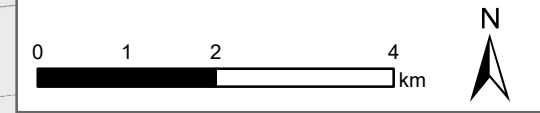
- Higher Theoretical Visibility
- Lower Theoretical Visibility

Viewpoint

1. Butt of Lewis Lighthouse/Core Path 1
2. A857 at turnoff to Melbost Borve
3. Shader/Core Path 1
5. A857 near junction with
7. A857 – inland

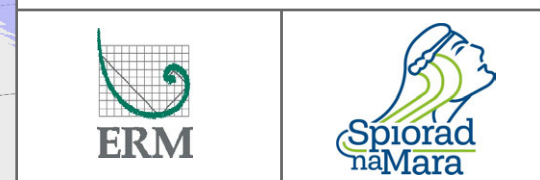


Blade tip:	380m above MSL	Observer height:	2m
DTM:	OS T5 DTM	Surface features:	Excluded
DTM resolution:	10m	Earth curvature:	Included



SCALE: See Scale Bar	VERSION: A01
SIZE: A3	DRAWN: NL
PROJECT: WGS84 UTM 29N	CHECKED: HB
DATE: 18/07/2023	APPROVED:

Figure 6.5d
Blade tip Zone of Theoretical Visibility (ZTV) with Proposed Viewpoints



PROJECTION: WGS 1984 UTM Zone 29N