

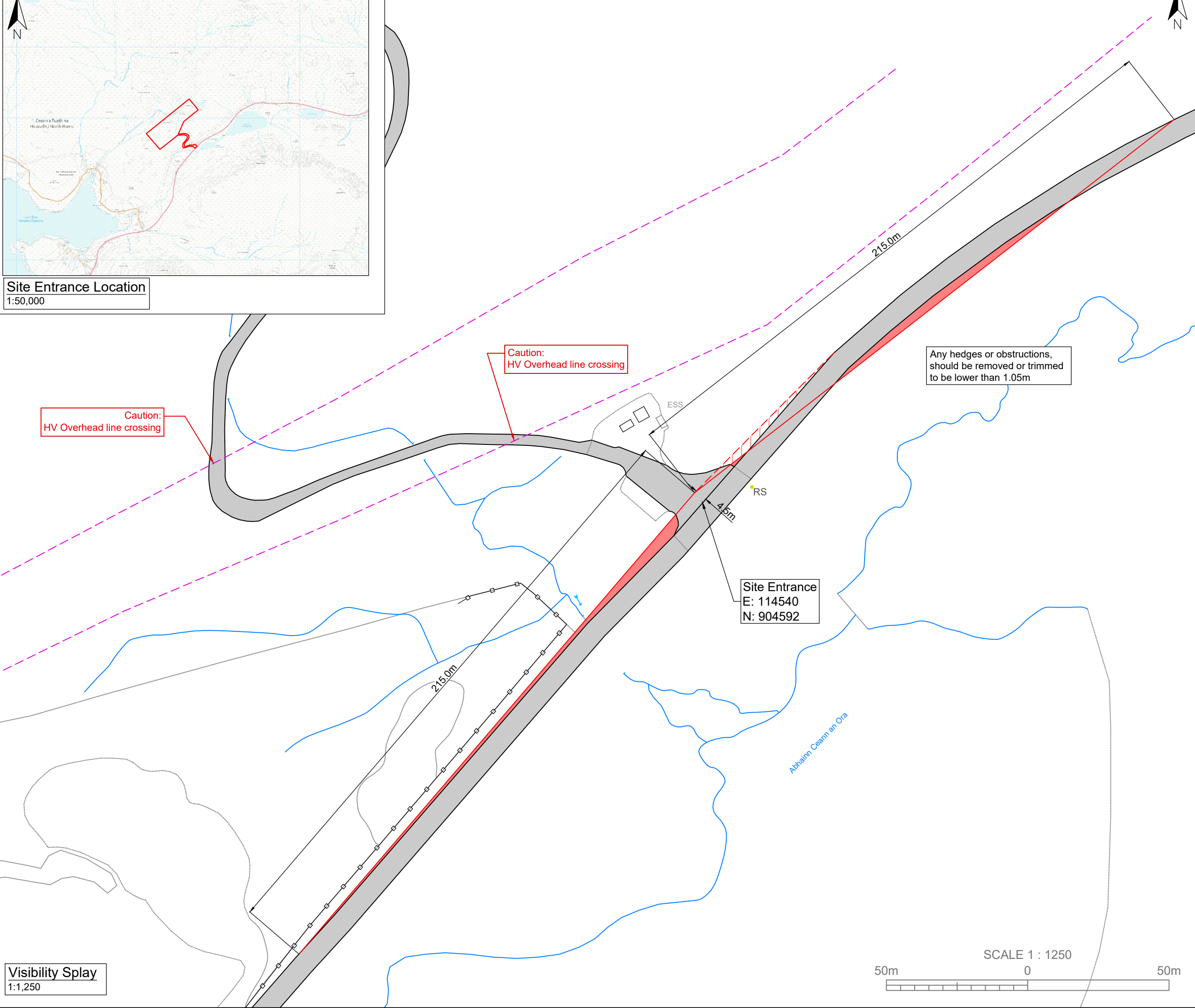
Site Entrance Location
1:50,000

General Notes

1. The copyright of this drawing is vested in Green Cat Renewables Ltd. and it may not be reproduced in whole or part or used for the manufacture of any article without the express permission of the copyright holders.
2. Work to figured dimensions only.
3. This drawing is to be read in conjunction with all relevant Green Cat Renewables Ltd. drawings and specifications.

Key:

Existing Carriageway	
Visibility Splay (215x4.5m) Approx Area = 368m ²	
Additional Visibility Splay Approx Area = 92m ²	
Planning App Boundary Approx Area = 20.6Ha	
HV Overhead Lines	



Visibility Splay
1:1,250

Site Entrance
E: 114540
N: 904592

Any hedges or obstructions,
should be removed or trimmed
to be lower than 1.05m

Caution:
HV Overhead line crossing


Caution:
HV Overhead line crossing

P01	PLANNING	CT	AF	RC	15.03.24
Rev	Description	Drn	Chk	App	Date



Green Cat Renewables Ltd
Stobo House
ROSLIN
EH25 9RE
0131 541 0060
Renewables www.greencatrenewables.co.uk

Client
Constantine Wind Energy (UK) Ltd



Project Title
Monan Repower

Drawing Title
Visibility Splay

Status
PLANNING

Scale @ size
SHOWN @ A3

Revision
P01

Drawing Number
C5507-GCR-WF-VS-DR-P-0001

Project Code - Originator - Zone - Level - Type - Role - Number

SCALE 1 : 1250

