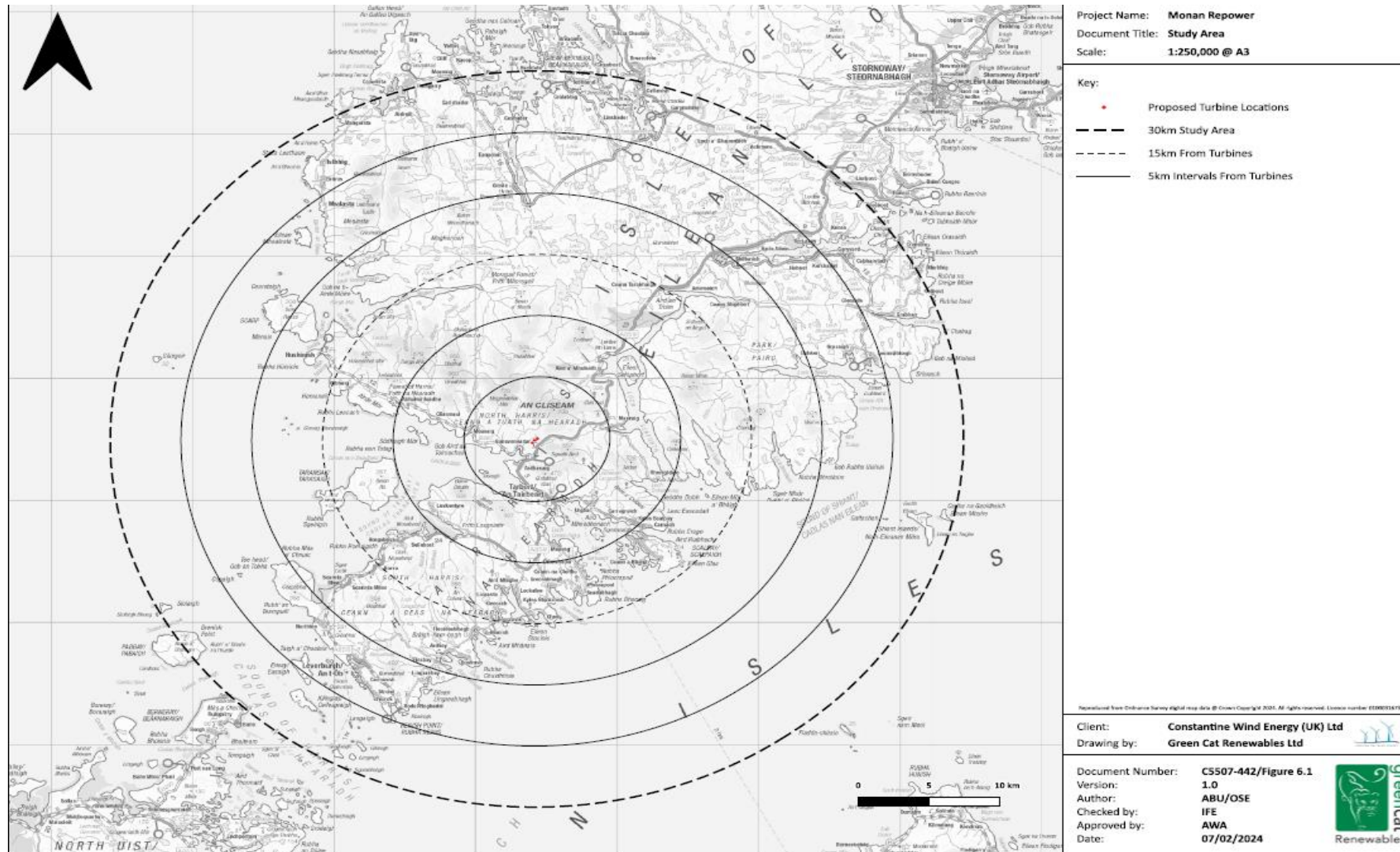
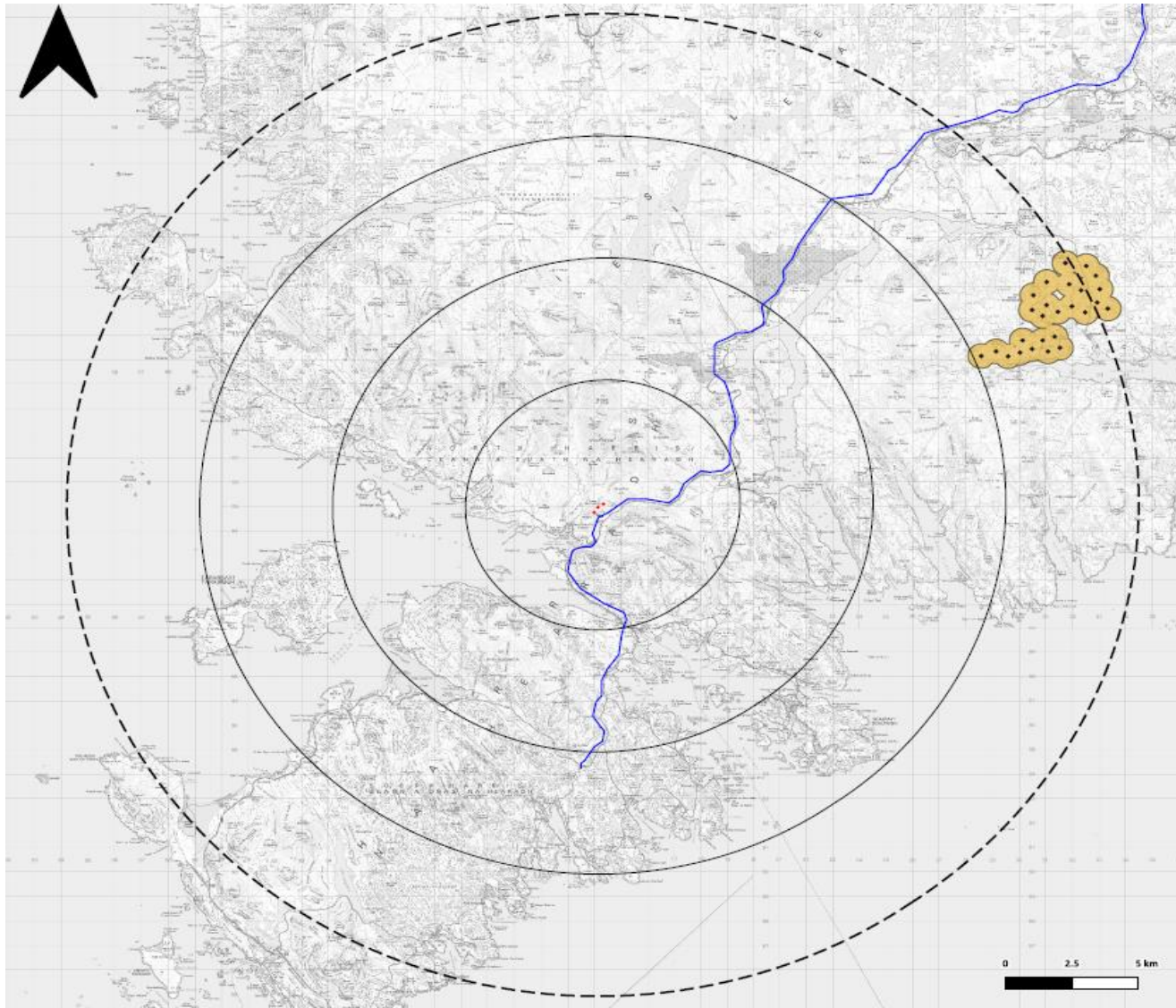


Study Area, Cumulative Projects and Visualisations



Cumulative projects



Project Name: **Monan Repower**
Document Title: **Figure 3.1 - Cumulative Projects**
Scale: **1:150,000@ A3**

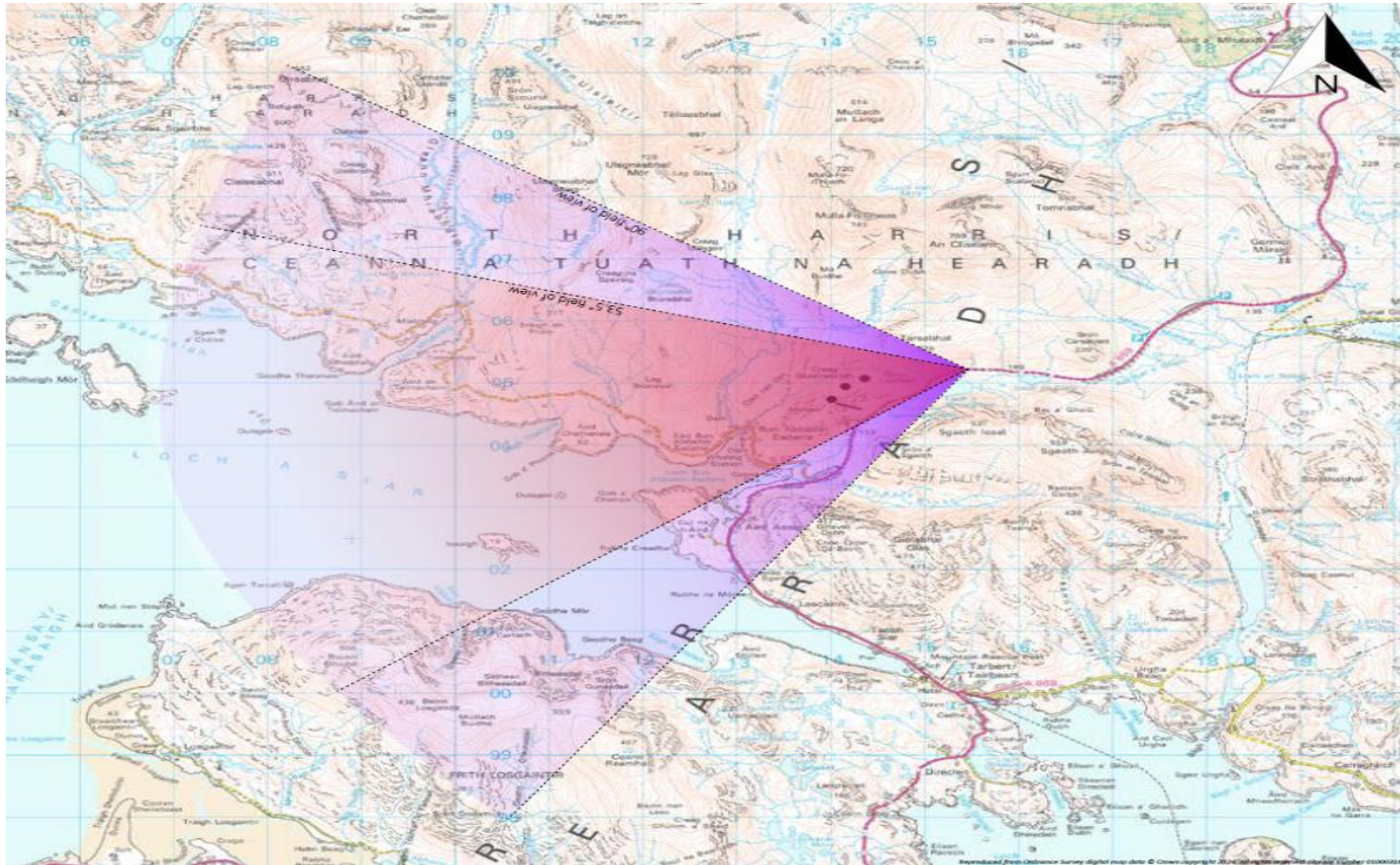
- Key:
- Proposed Turbine Locations
 - 20km Study Area
 - 5km Intervals from Turbines
 - Uisenis Wind Farm (In Planning)
 - 132kV HV Connection Harris to Stornoway (Replacement)


Client: **Constantine Wind Energy (UK) Ltd**
Drawing by: **Green Cat Renewables Ltd**

Project Number: **CS507-442**
Version: **1.0**
Author: **ABU/OSE**
Checked by: **IFE**
Approved by: **RCD**
Date: **20/02/2024**

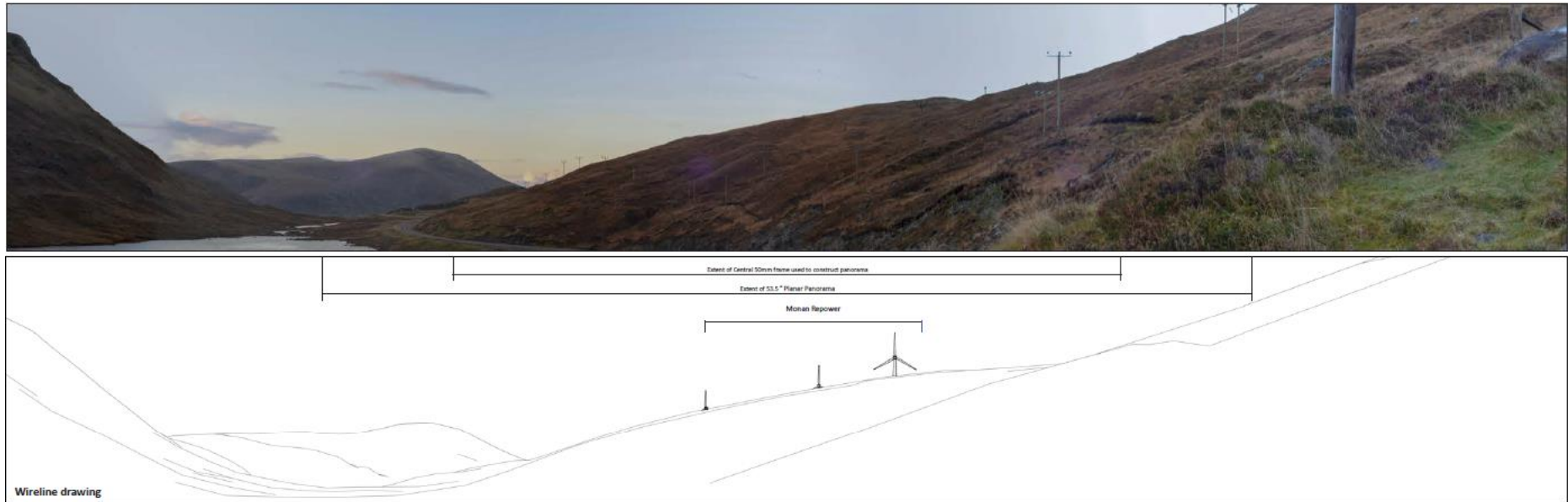


Viewpoint 01: A859 at Loch a Mhorghain



Project Name: Monan Repower	
Document Title: Viewpoint 1 - A859 at Loch a Mhorghian	
Scale: 1:50,000 @ A3	
Key:	<ul style="list-style-type: none"> ● Proposed Wind Turbine Locations ◀ Field of View
Viewpoint Information	
Viewpoint Location:	E115444 N905215
Viewpoint Elevation:	168m (AOD)
View Direction:	256°
Distance to Turbine:	1.1km
Client: Constantine Wind Energy (UK) Ltd	
Drawing by: Green Cat Renewables Ltd	
Document Number:	C5507-442/Figure 6.9
Version:	1.0
Author:	OSE
Checked by:	IFE
Approved By:	AWA
Date:	15/02/2024
	

Existing from Viewpoint 01: A859 at Loch a Mhorghain



Proposed from Viewpoint 01: A859 at Loch a Mhorghain

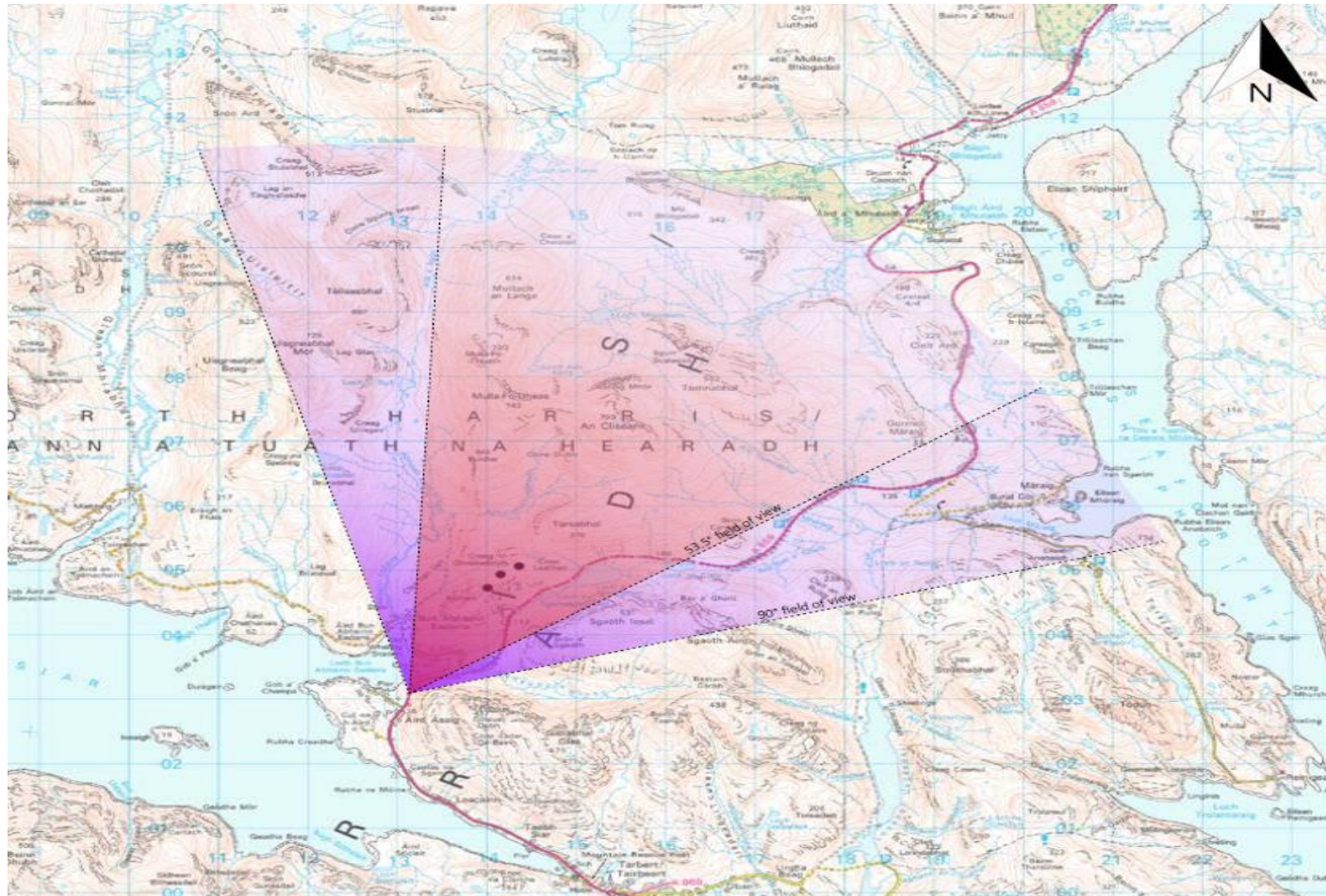


Viewpoint Location:	E115444 N303215	Field of View:	55.5° [plane]	Camera:	Nikon D620
Viewpoint Elevation:	168m AOD	Principal Distance:	812.51m	Lens:	50mm (Nikkor)
View Direction:	256°	Paper size:	941 x 297mm	Camera Height:	1.5 AGL
Nearest Turbine:	1.2km	Printed Image size:	820 x 260mm	Date and Time:	07/12/2023 09:37

Figure: 6.9c

Viewpoint 01: A859 at Loch a Mhorghain

Viewpoint 02: A859 overlooking Ceann an Ora



Project Name: Monan Repower
 Document Title: Viewpoint 2 - A859 Overlooking Ceann an Ora
 Scale: 1:50,000 @ A3

Key:
 ● Proposed Wind Turbine Locations
 Field of View

Viewpoint Information

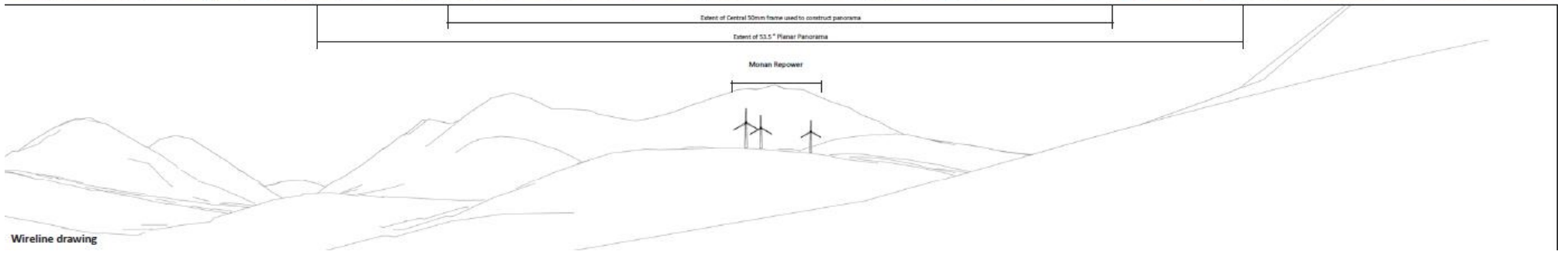
Viewpoint Location: E113134 N903077
 Viewpoint Elevation: 31m (AOD)
 View Direction: 30°
 Distance to Turbine: 1.9km

Client: Constantine Wind Energy (UK) Ltd
 Drawing by: Green Cat Renewables Ltd

Document Number: C5507-442/Figure 6.10
 Version: 1.0
 Author: OSE
 Checked by: IFE
 Approved By: AWA
 Date: 15/02/2024



Existing from Viewpoint 02: A859 overlooking Ceann an Ora



Proposed from Viewpoint 02: A859 overlooking Ceann an Ora

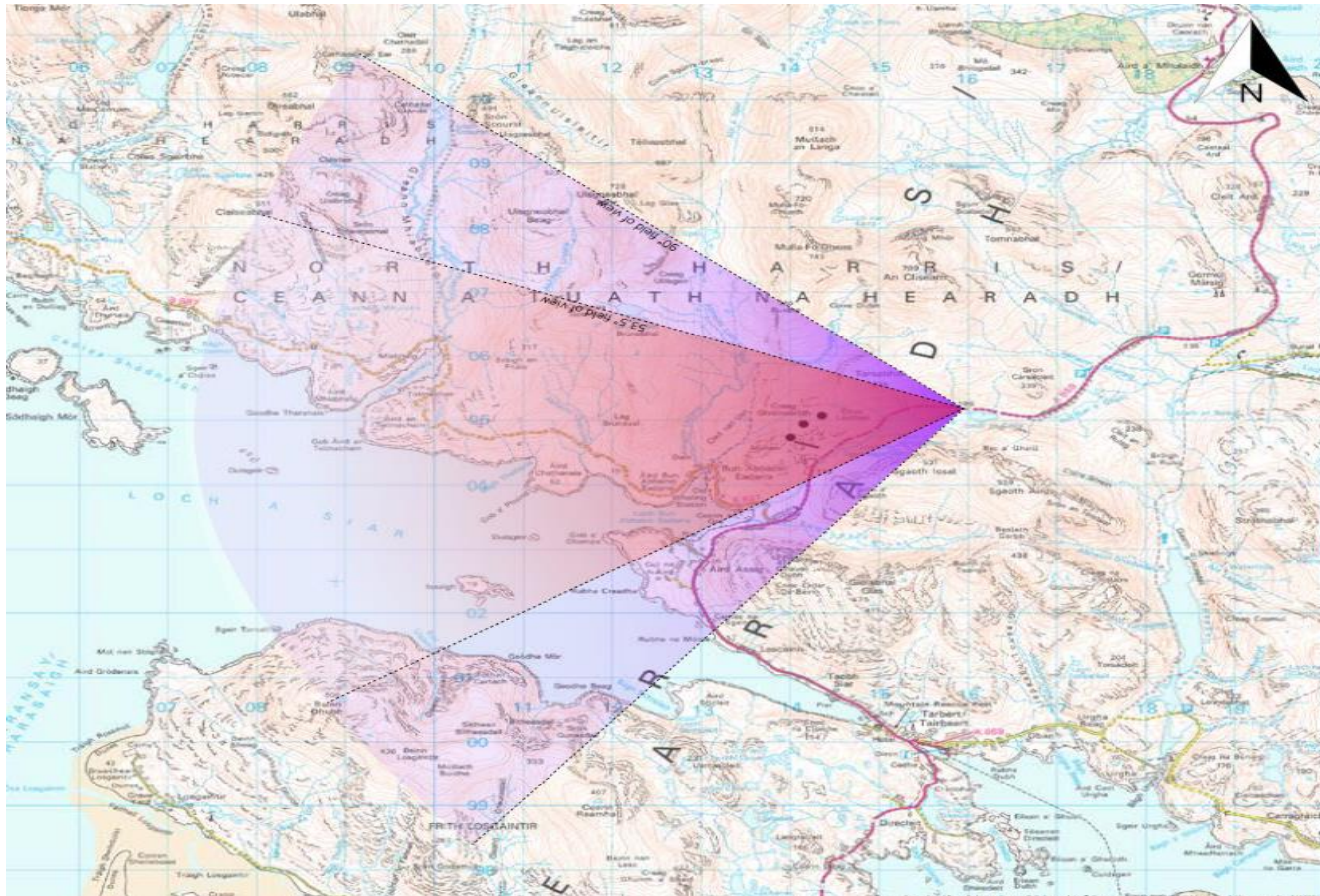


Viewpoint Location:	E113134 N003077	Field of View:	53.5° (plane)	Camera:	Nikon D610
Viewpoint Elevation:	33m AOD	Principal Distance:	812.5m	Lens:	50mm (Nikkor)
View Direction:	30°	Paper size:	841 x 257mm	Camera Height:	1.54m
Nearest Turbine:	1.9km	Printed image size:	820 x 252mm	Date and Time:	02/12/2023 09:47

Figure: 6.10c

Viewpoint 02: A859 Overlooking Ceann an Ora

Viewpoint 03: A859 at Loch na Ciste



Project Name: Monan Repower
 Document Title: Viewpoint 3 - A859 at Loch na Ciste
 Scale: 1:50,000 @ A3

Key:
 ● Proposed Wind Turbine Locations
 ◀ Field of View

Viewpoint Information

Viewpoint Location: E115950 N905166
 Viewpoint Elevation: 185m (AOD)
 View Direction: 263°
 Distance to Turbine: 1.6km

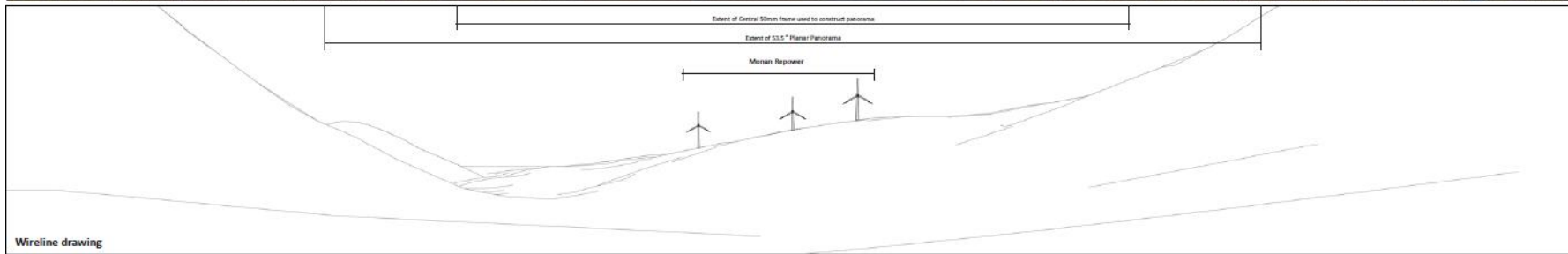
Client: Constantine Wind Energy (UK) Ltd
 Drawing by: Green Cat Renewables Ltd

Document Number: CS507-442/Figure 6.11
 Version: 1.0
 Author: OSE
 Checked by: IFE
 Approved By: AWA
 Date: 15/02/2024



©Green Cat Renewables Ltd

Existing Viewpoint 03: A859 from Loch na Ciste



Wireline drawing

Viewpoint Location:	E1123850/N6026186	Field of View:	90° (cylindrical)	Camera:	Nikon D630
Viewpoint Elevation:	125m AOD	Principal Distance:	522mm	Lens:	50mm (Nikkor)
View Direction:	263°			Camera Height:	1.5 AGL
Horizon Turbine:	1.6km			Date and Time:	02/12/2023 09:29

Figure: 6.11e
Viewpoint 03: A859 at Loch na Ciste

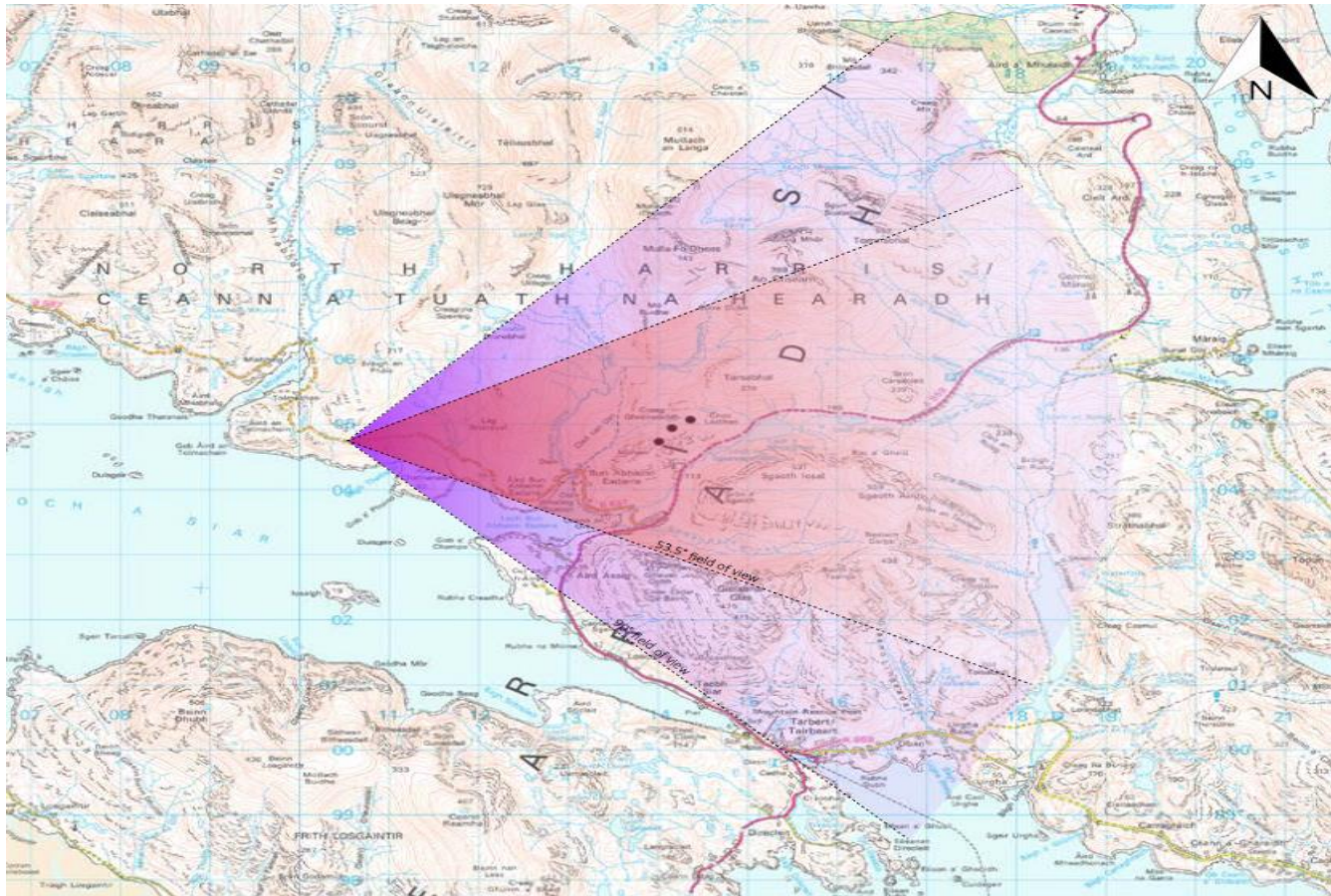
Proposed Viewpoint 03: A859 from Loch na Ciste



Newpoint Location:	E115980 N905166	Field of View:	53.5° (planar)	Camera:	Mikon D650
Newpoint Elevation:	120m AOD	Principal Distance:	812.5mm	Lens:	50mm (Nikkor)
View Direction:	205°	Paper size:	841 x 207mm	Camera Height:	1.5 AGL
Closest Turbine:	1.6km	Printed image size:	820 x 260mm	Date and Time:	01/12/2023 09:29

Figure: 6.11c
Viewpoint 03: A859 at Loch na Ciste

Viewpoint 04: B887 from Tolmahan



Project Name: Monan Repower

Document Title: Viewpoint 4 - B887 at Tolmahan

Scale: 1:50,000 @ A3

Key:

- Proposed Wind Turbine Locations
- Field of View

Viewpoint Information

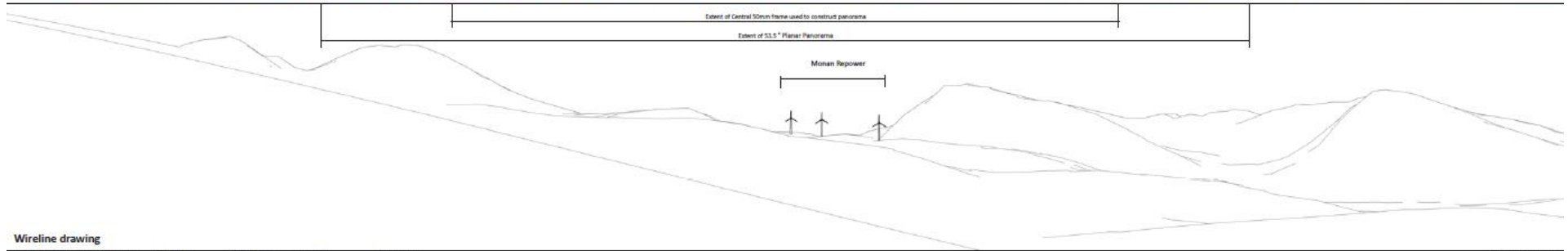
Viewpoint Location: E110540 N904726
 Viewpoint Elevation: 98m (AOD)
 View Direction: 85°
 Distance to Turbine: 3.5km

Client: Constantine Wind Energy (UK) Ltd
 Drawing by: Green Cat Renewables Ltd

Document Number: CS507-442/Figure 6.12
 Version: 1.0
 Author: OSE
 Checked by: IFE
 Approved by: AWA
 Date: 15/02/2024



Existing Viewpoint 04: B887 from Tolmacha



Wireline drawing

Viewpoint Location:	5310540/1904726	Field of View:	30° (cylindrical)	Camera:	Nikon D630
Viewpoint Elevation:	30m AGL	Principal Distance:	3.2mm	Lens:	50mm (Nikkor)
View Direction:	85°			Camera Height:	1.5 AGL
Closest Turbine:	3.5km			Date and Time:	01/12/2023 10:24

Figure: 6.12a
Viewpoint 04: B887 at Tolmacha

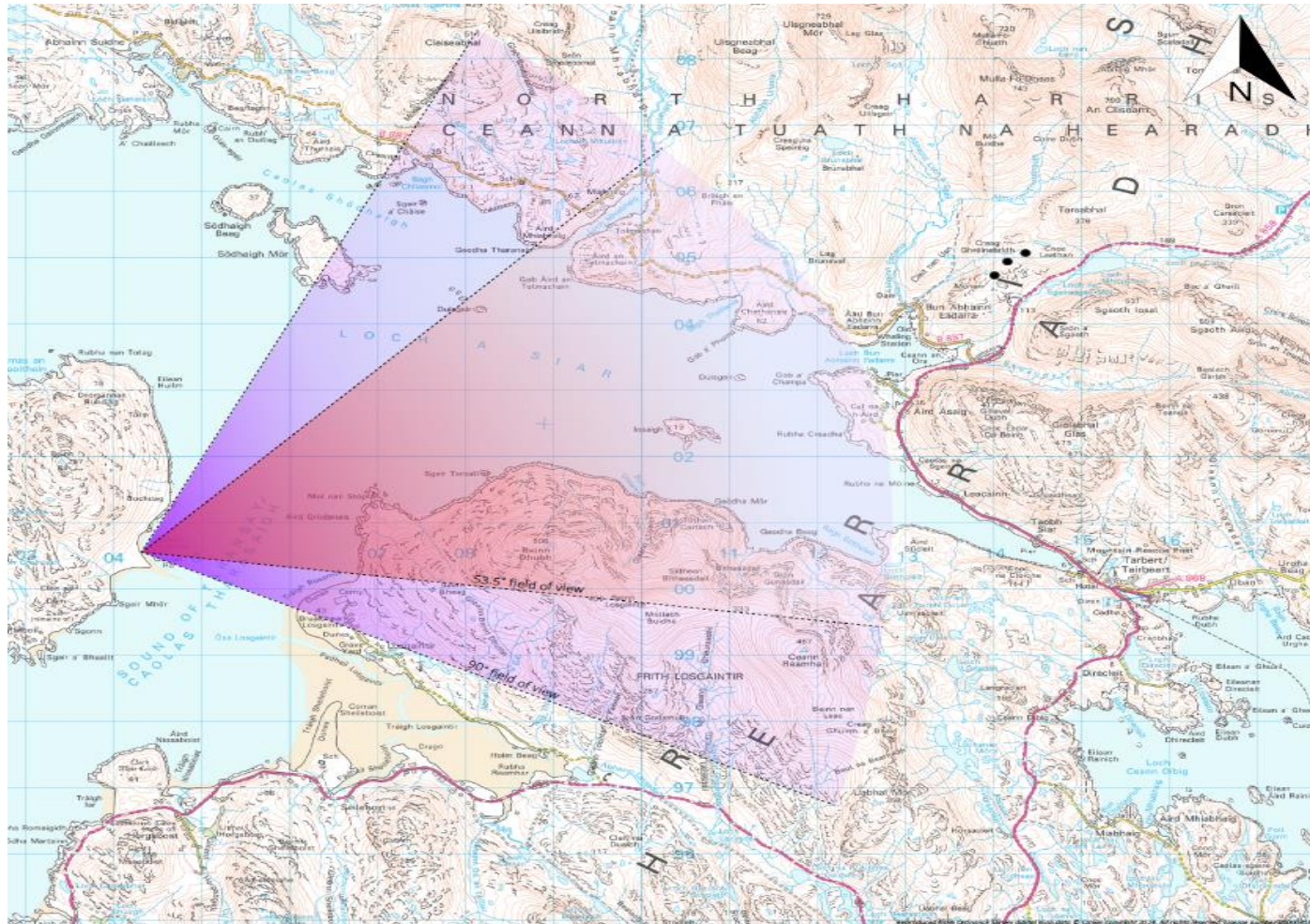
Proposed Viewpoint 04: B887 from Tolmahan



Viewpoint Location:	E110540 N004726	Field of View:	53.5° (panor)	Camera:	Nikon D610
Viewpoint Elevation:	30m AGL	Principal Distance:	812.5mm	Lens:	50mm (Wide)
View Direction:	85°	Paper size:	841 x 297mm	Camera Height:	1.5 AGL
Nearest Turbine:	3.5km	Printed image size:	820 x 260mm	Date and Time:	01/12/2023 10:24

Figure: 6.12c
Viewpoint 04: B887 at Tolmahan

Proposed Viewpoint 05: Taransay



Project Name:	Monan Repower
Document Title:	Viewpoint 5 - Taransay
Scale:	1:50,000 @ A3
Key:	<ul style="list-style-type: none"> ● Proposed Wind Turbine Locations ◡ Field of view

Viewpoint Information	
Viewpoint Location:	E104278 N900561
Viewpoint Elevation:	2m (AOD)
View Direction:	67°
Distance to Turbine:	10.6km

Client:	Constantine Wind Energy (UK) Ltd	
Drawing by:	Green Cat Renewables Ltd	
Document Number:	CS507-442/Figure 6.13	
Version:	1.0	
Author:	OSE	
Checked by:	IFE	
Approved By:	AWA	
Date:	16/02/2024	©Green Cat Renewables Ltd

Proposed Viewpoint 05: from Taransay



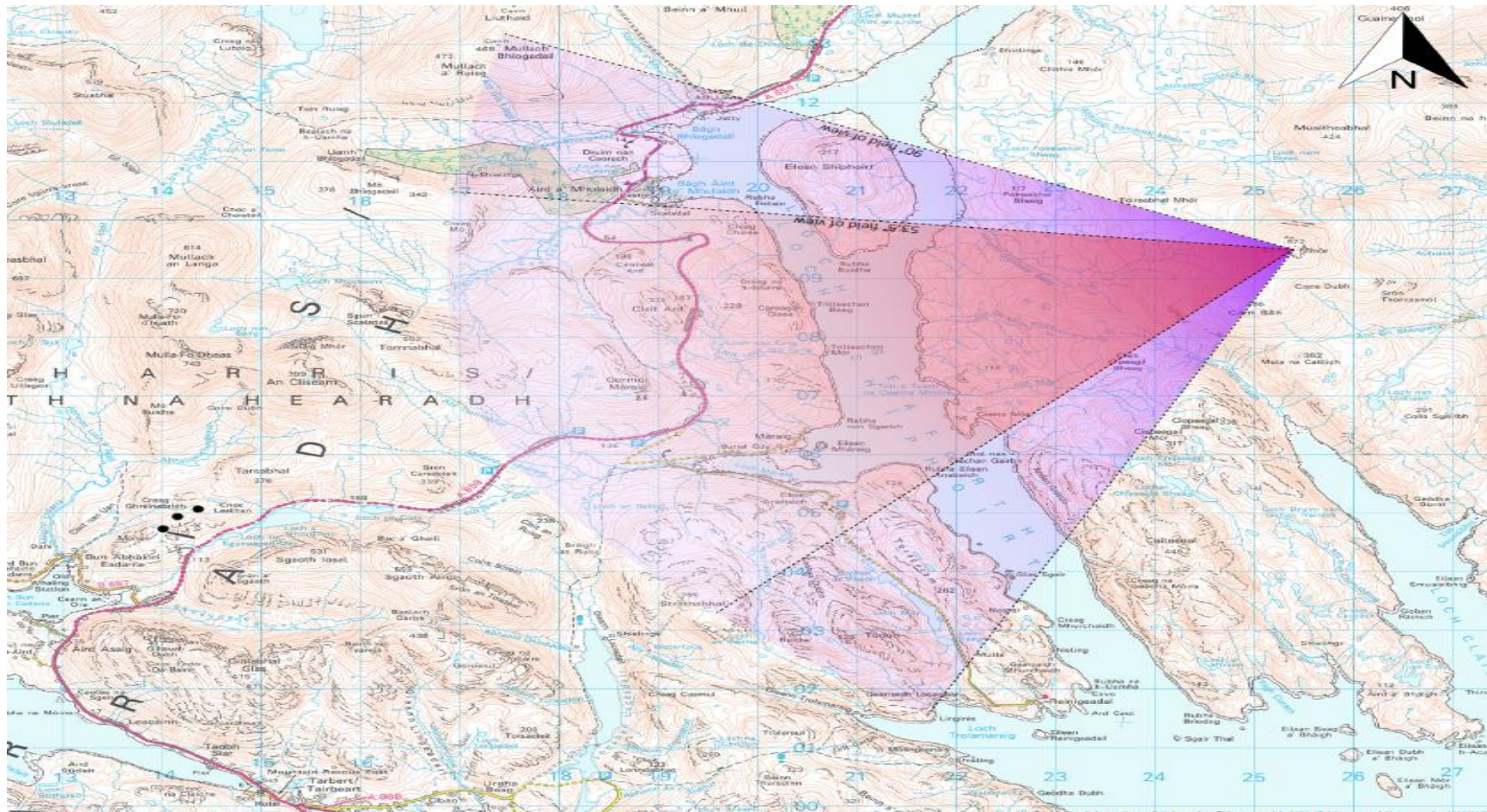
Wireline drawing

viewpoint Location:	E104278 N600561	Field of View:	53.5° (planar)
viewpoint Orientation:	2m ACO	Principal Distance:	822.5mm
view Direction:	E7°	Paper size:	841 x 297mm
target Turbine:	30.6m	Printed Image size:	820 x 260mm

View flat at a comfortable arm's length

Figure: 6.13:
Viewpoint 05: Taransay

Viewpoint 06 - Beinn Mhor



Proposed Viewpoint 06 – from Beinn Mhor



Wireline drawing

View flat at a comfortable arm's length

Viewpoint Location:	E125370 N009463	Field of View:	53.3° (planar)
Viewpoint Elevation:	500m AOD	Principal Distance:	817.5mm
View Direction:	243°	Paper size:	841 x 297mm
Nearest Terrain:	11.9km	Printed Image size:	820 x 290mm

Figure: 6.14a
Viewpoint 06: Beinn Mhor