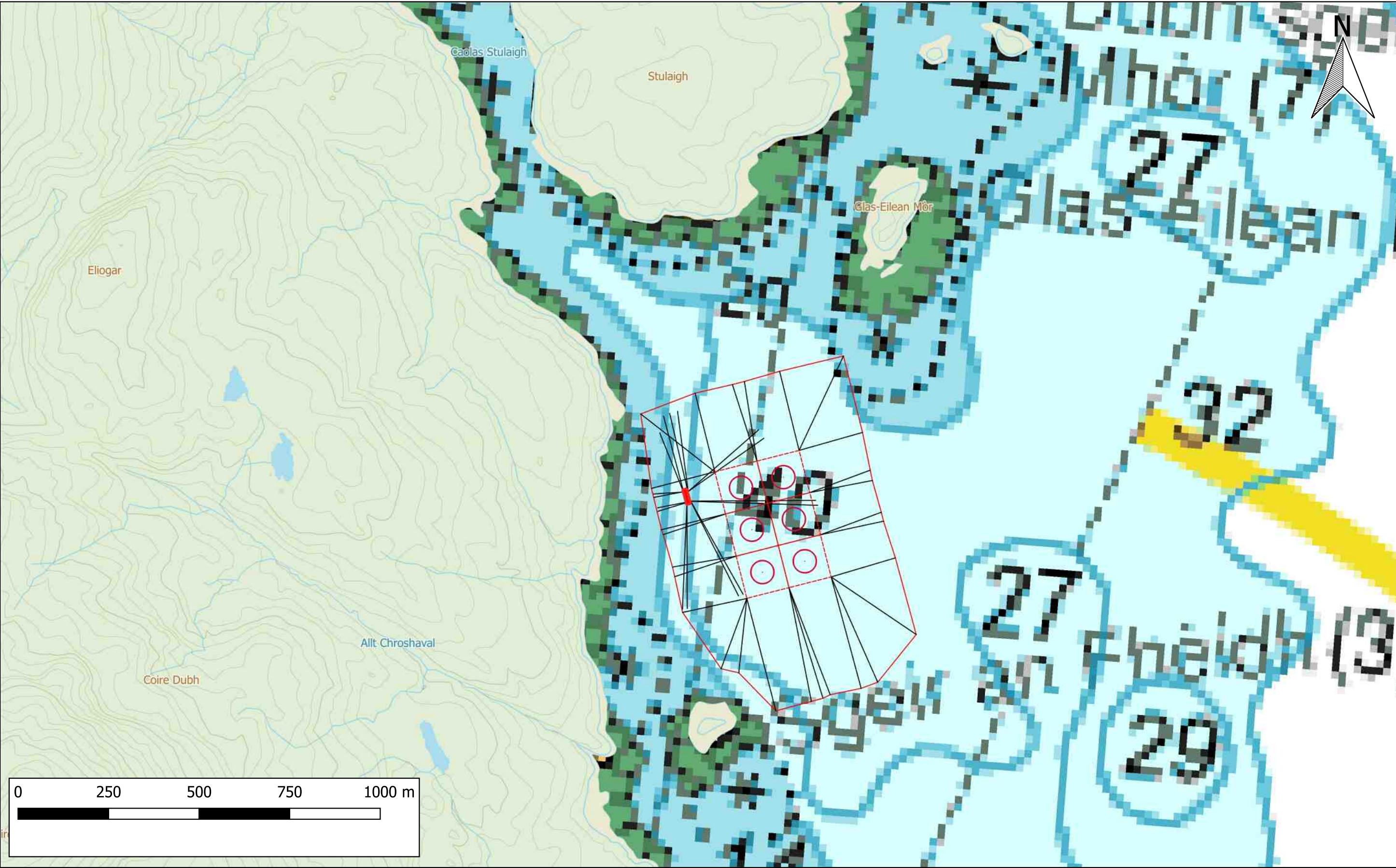




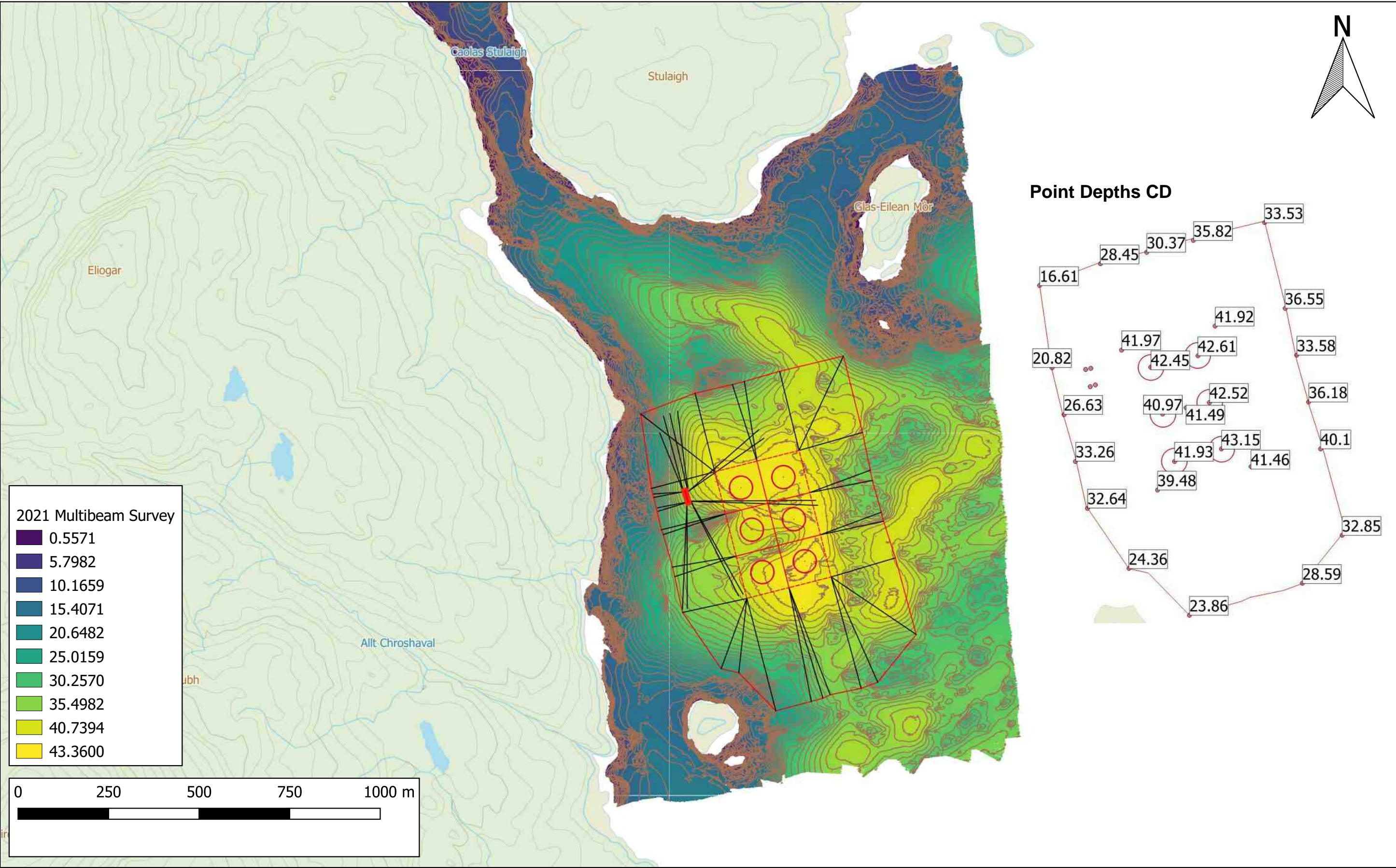
| | | | | | | | |
|---|---|----------|------------|-----|----|----|-------|
| STULAIGH SOUTH FISH FARM: SOUTH UIST | <div>Key</div> <div><div><div></div>Planning Boundary and Moorings Area</div><div><div></div>Proposed Matrix Grid (120m)</div><div><div></div>Proposed Feed Barge (43.4m x 12m)</div><div><div></div>Proposed Pens (200m circumference)</div></div> | 1:180000 | 10/11/2022 | CLH | SC | v1 | Final |
| LOCATION PLAN: ORDNANCE SURVEY MAP | | | | | | | |
| Layout 6 x 200m circumference pens in a 120m matrix Configuration 2x3 | | | | | | | |



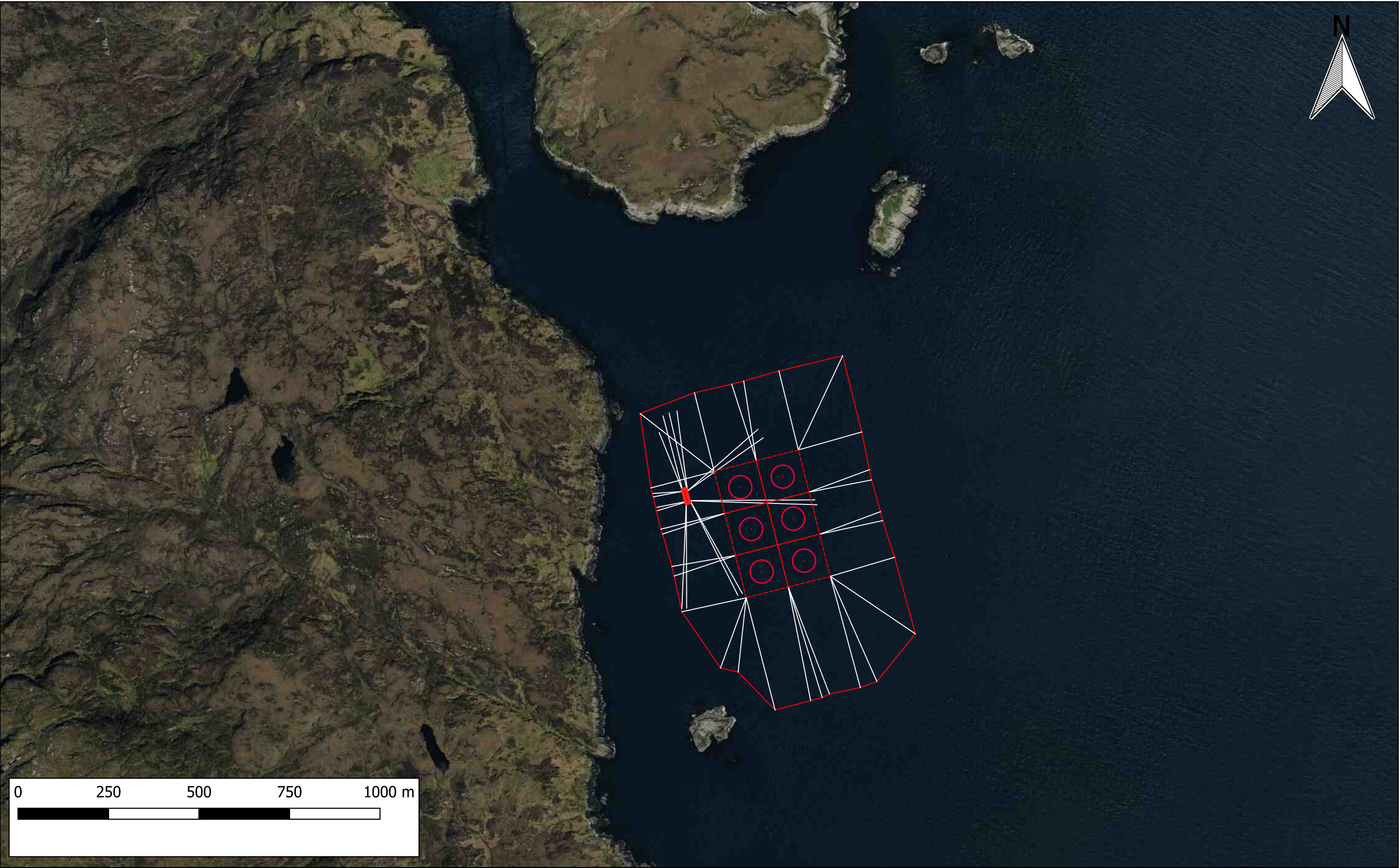
| | | | | | | | |
|---|---|---------|------------|-------|---------|--------------|--------|
| STULAIGH SOUTH FISH FARM: SOUTH UIST | <div>Key</div> <div>Site Centre Point Coordinate: NF E83356 N822123 57 10.810, -7 14.535</div> <div><div></div> Planning Boundary and Moorings Area<div></div> Proposed Matrix Grid (120m)<div></div> Proposed Feed Barge (43.4m x 12m)<div></div> Proposed Pens (200m circumference)</div> | 1:25000 | 10/11/2022 | CLH | SC | v1 | Final |
| LOCATION PLAN: ORDNANCE SURVEY MAP | | Scale | Date | Drawn | Checked | Revision No. | Status |
| Layout 6 x 200m circumference pens in a 120m matrix Configuration 2x3 | | | | | | | |



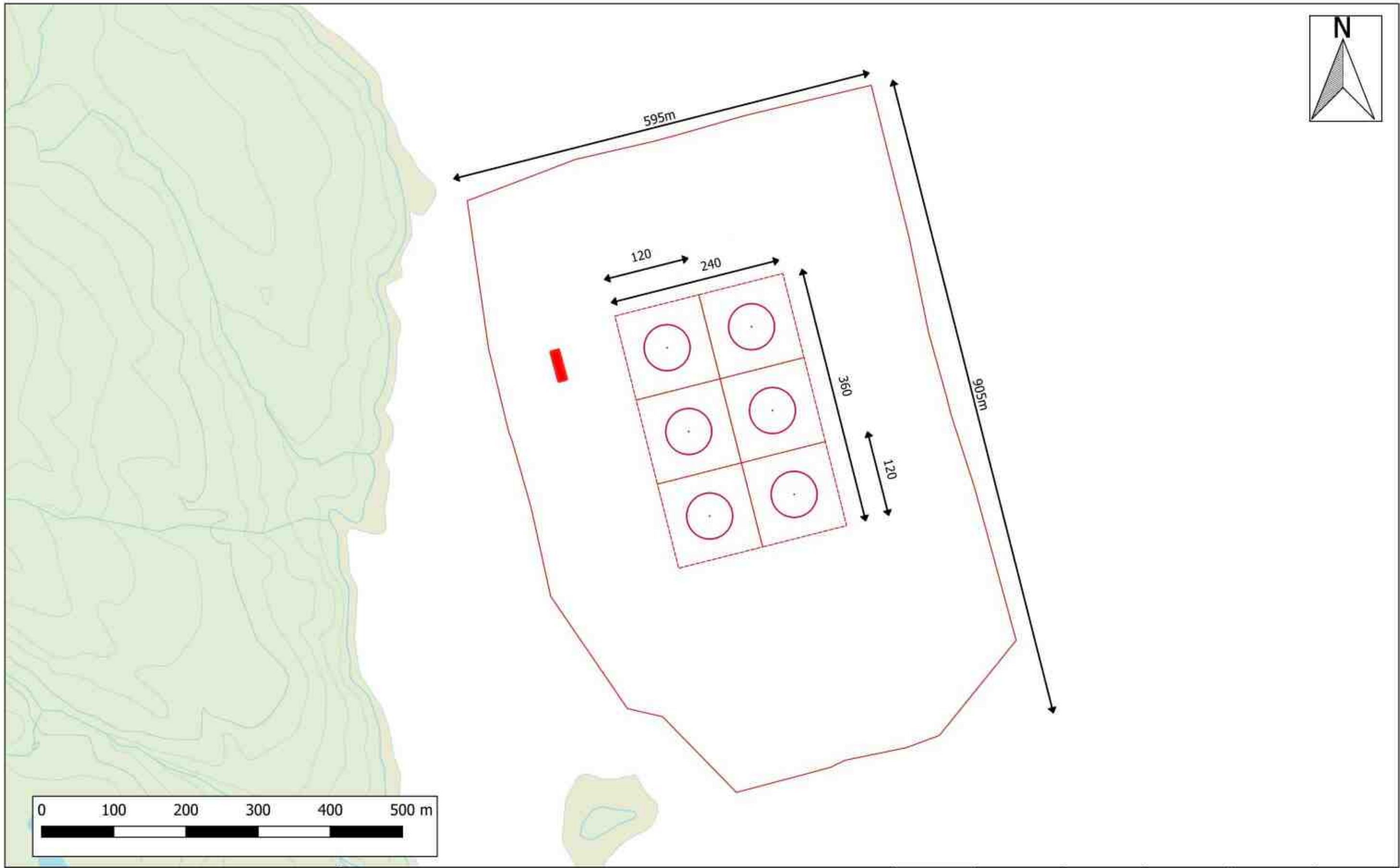
| | | | | | | | |
|---|--|---------|------------|-------|---------|--------------|--------|
| STULAIGH SOUTH FISH FARM: SOUTH UIST | <div>Key</div> <div>Site Centre Point Coordinate: NF E83356 N822123 57 10.810, -7 14.535</div> <div><div></div> Planning Boundary and Moorings Area</div> <div><div></div> Proposed Pens (200m circumference)</div> <div><div></div> Proposed Feed Barge (43.4m x 12m)</div> <div>Proposed MooringLines</div> <div><div></div> Proposed Matrix Grid (120m)</div> | 1:10000 | 10/11/2022 | CLH | SC | v1 | Final |
| LOCATION PLAN: ADMIRALTY CHART | | Scale | Date | Drawn | Checked | Revision No. | Status |
| Layout 6 x 200m circumference pens in a 120m matrix Configuration 2x3 | | | | | | | |



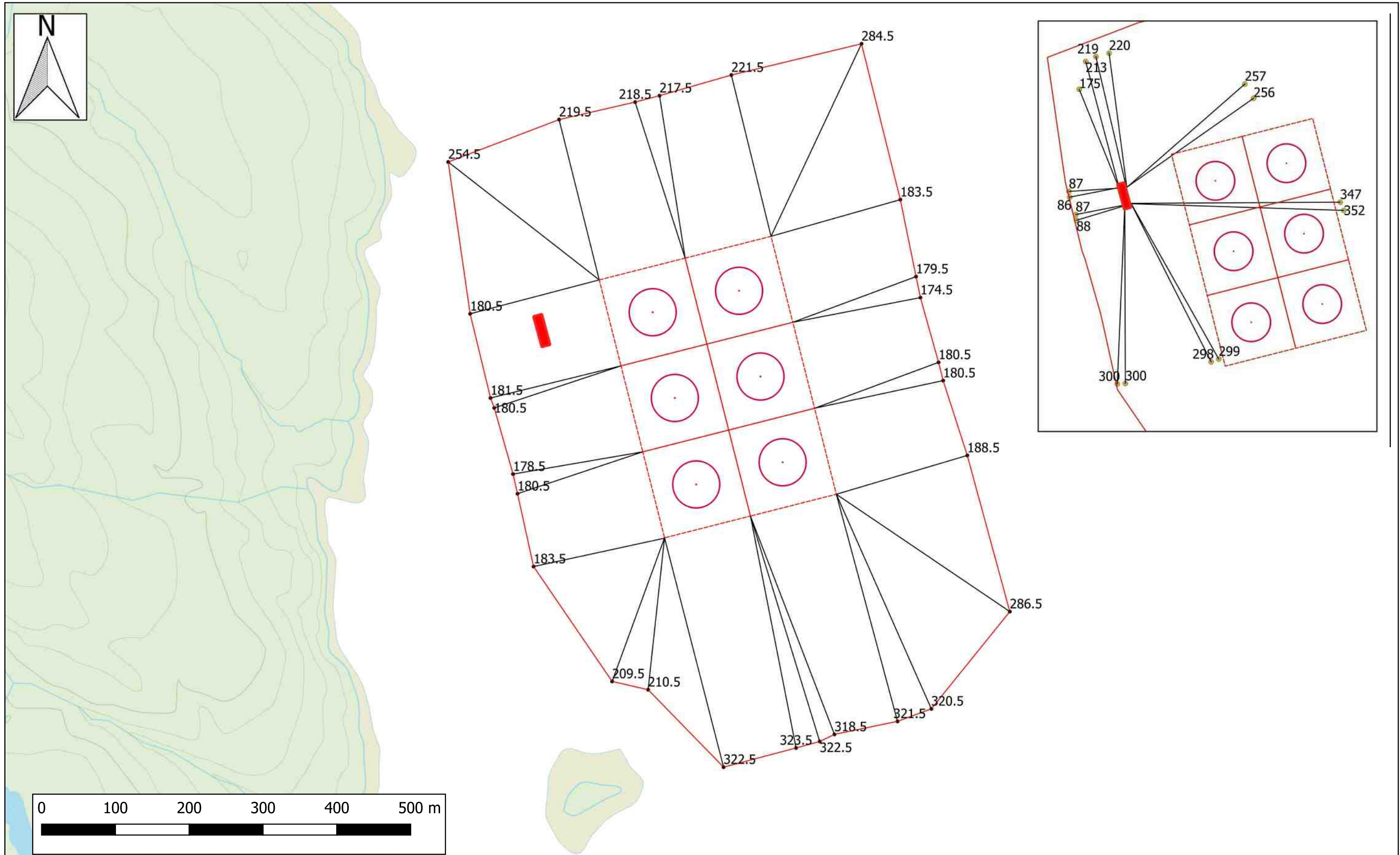
| | | | | | | | |
|---|--|---------|------------|-------|---------|--------------|--------|
| STULAIGH SOUTH FISH FARM: SOUTH UIST | <div>Key</div> <div>Site Centre Point Coordinate: NF E83356 N822123 57 10.810, -7 14.535</div> <div><div><div></div>Planning Boundary and Moorings Area</div><div><div></div>Proposed Pens (200m circumference)</div><div><div></div>Proposed Feed Barge (43.4m x 12m)</div><div><div></div>Proposed Mooring Lines</div><div><div></div>Proposed Matrix Grid (120m)</div><div><div></div>1m contour depthPoint</div></div> | 1:10000 | 10/11/2022 | CLH | SC | v1 | Final |
| LOCATION PLAN: MULTIBEAM BATHYMETRY SURVEY | | Scale | Date | Drawn | Checked | Revision No. | Status |
| Layout 6 x 200m circumference pens in a 120m matrix Configuration 2x3 | | | | | | | |



| | | | | | | | |
|---|---|---------|------------|-------|---------|--------------|--------|
| STULAIGH SOUTH FISH FARM: SOUTH UIST | <div>Key</div> <div><div><div></div>Planning Boundary and Moorings Area</div><div><div></div>Proposed Pens (200m circumference)</div><div><div></div>Proposed Feed Barge (43.4m x 12m)</div><div><div></div>Proposed Mooring Lines</div><div><div></div>Proposed Matrix Grid (120m)</div></div> | 1:10000 | 10/11/2022 | CLH | SC | v1 | Final |
| LOCATION PLAN: AERIAL PHOTOGRAPH | | Scale | Date | Drawn | Checked | Revision No. | Status |
| Layout 6 x 200m circumference pens in a 120m matrix Configuration 2x3 | | | | | | | |



| | | | | | | | |
|---|---|--------|------------|-------|---------|--------------|--------|
| STULAIGH SOUTH FISH FARM: SOUTH UIST | <div>Key</div> <div>Site Centre Point Coordinate: NF E83356 N822123 57 10.810, -7 14.535</div> <div><div><div></div> Planning Boundary and Moorings Area</div><div><div></div> Proposed Matrix Grid (120m)</div><div><div></div> Proposed Feed Barge (43.4m x 12m)</div><div><div></div> Proposed Pens (200m circumference)</div></div> | 1:5000 | 10/11/2022 | CLH | SC | v1 | Final |
| SITE PLAN | | Scale | Date | Drawn | Checked | Revision No. | Status |
| Layout 6 x 200m circumference pens in a 120m matrix Configuration 2x3 | | | | | | | |



| | | | | | | | |
|---|---|--------|------------|-------|---------|--------------|--------|
| STULAIGH SOUTH FISH FARM: SOUTH UIST | Key <div>Planning Boundary and Moorings Area</div> <div>Proposed Feed Barge (43.4m x 12m)</div> <div>Proposed Matrix Grid (120m)</div> <div>Proposed Pens (200m circumference)</div> <div>Proposed MooringLines</div> | 1:5000 | 10/11/2022 | CLH | SC | v1 | Final |
| SITE PLAN INCLUDING MOORING LENGTHS | | Scale | Date | Drawn | Checked | Revision No. | Status |
| Layout 6 x 200m circumference pens in a 120m matrix Configuration 2x3 | | | | | | | |

Proposed Site Coordinates

| | British National Grid | | WGS 1984 | | | |
|-------------------|-----------------------|-----------|-------------------------|--------------|-----------|-----------|
| | | | Degrees decimal minutes | | Degrees | |
| | Eastings | Northings | Latitude | Longitude | Latitude | Longitude |
| Site Centre | 83356 | 822123 | 57° 10.810' | - 7° 14.535' | 57.18017 | -7.242249 |
| Pen Centre 1 | 83268 | 822227 | 57° 10.862' | - 7° 14.630' | 57.18104 | -7.24383 |
| Pen Centre 2 | 83385 | 822256 | 57° 10.883' | - 7° 14.516' | 57.18138 | -7.24194 |
| Pen Centre 3 | 83298 | 822111 | 57° 10.801' | - 7° 14.591' | 57.180023 | -7.243189 |
| Pen Centre 4 | 83414 | 822140 | 57° 10.822' | - 7° 14.479' | 57.180362 | -7.241315 |
| Pen Centre 5 | 83327 | 821994 | 57° 10.740' | - 7° 14.554' | 57.178996 | -7.242563 |
| Pen Centre 6 | 83444 | 822024 | 57° 10.761' | - 7° 14.440' | 57.179345 | -7.240674 |
| Matrix Corner SW | 83284 | 821922 | 57° 10.699' | - 7° 14.591' | 57.178322 | -7.243179 |
| Matrix Corner SE | 83517 | 821981 | 57° 10.741' | - 7° 14.365' | 57.179011 | -7.239417 |
| Matrix Corner NW | 83196 | 822271 | 57° 10.883' | - 7° 14.704' | 57.181384 | -7.245072 |
| Matrix Corner NE | 83428 | 822330 | 57° 10.924' | - 7° 14.480' | 57.182071 | -7.241326 |
| Pen Mooring 1 | 82991 | 822430 | 57° 10.960' | - 7° 14.919' | 57.182664 | -7.248651 |
| Pen Mooring 2 | 83141 | 822488 | 57° 10.997' | - 7° 14.775' | 57.183287 | -7.246254 |
| Pen Mooring 3 | 83244 | 822511 | 57° 11.014' | - 7° 14.675' | 57.183564 | -7.244587 |
| Pen Mooring 4 | 83277 | 822520 | 57° 11.020' | - 7° 14.643' | 57.183667 | -7.244055 |
| Pen Mooring 5 | 83375 | 822548 | 57° 11.039' | - 7° 14.549' | 57.183985 | -7.242476 |
| Pen Mooring 6 | 83551 | 822590 | 57° 11.069' | - 7° 14.378' | 57.184482 | -7.23963 |
| Pen Mooring 7 | 83603 | 822379 | 57° 10.958' | - 7° 14.310' | 57.18263 | -7.238505 |
| Pen Mooring 8 | 83625 | 822275 | 57° 10.903' | - 7° 14.281' | 57.181715 | -7.238011 |
| Pen Mooring 9 | 83631 | 822247 | 57° 10.888' | - 7° 14.273' | 57.181469 | -7.237876 |
| Pen Mooring 10 | 83655 | 822159 | 57° 10.842' | - 7° 14.242' | 57.180698 | -7.237369 |
| Pen Mooring 11 | 83661 | 822134 | 57° 10.829' | - 7° 14.234' | 57.180479 | -7.237239 |
| Pen Mooring 12 | 83694 | 822033 | 57° 10.776' | - 7° 14.194' | 57.179598 | -7.236567 |
| Pen Mooring 13 | 83752 | 821822 | 57° 10.665' | - 7° 14.121' | 57.17775 | -7.235344 |
| Pen Mooring 14 | 83645 | 821690 | 57° 10.590' | - 7° 14.216' | 57.176496 | -7.236939 |
| Pen Mooring 15 | 83600 | 821673 | 57° 10.579' | - 7° 14.260' | 57.176313 | -7.237659 |
| Pen Mooring 16 | 83514 | 821656 | 57° 10.566' | - 7° 14.343' | 57.176102 | -7.239053 |
| Pen Mooring 17 | 83494 | 821646 | 57° 10.560' | - 7° 14.362' | 57.175998 | -7.23937 |
| Pen Mooring 18 | 83462 | 821637 | 57° 10.554' | - 7° 14.393' | 57.175896 | -7.239886 |
| Pen Mooring 19 | 83364 | 821612 | 57° 10.536' | - 7° 14.488' | 57.175604 | -7.241468 |
| Pen Mooring 20 | 83262 | 821716 | 57° 10.588' | - 7° 14.597' | 57.176464 | -7.24328 |
| Pen Mooring 21 | 83213 | 821727 | 57° 10.592' | - 7° 14.646' | 57.176529 | -7.244101 |
| Pen Mooring 22 | 83107 | 821883 | 57° 10.671' | - 7° 14.763' | 57.177851 | -7.246045 |
| Pen Mooring 23 | 83085 | 821981 | 57° 10.723' | - 7° 14.792' | 57.178713 | -7.246532 |
| Pen Mooring 24 | 83079 | 822008 | 57° 10.737' | - 7° 14.800' | 57.17895 | -7.246665 |
| Pen Mooring 25 | 83053 | 822098 | 57° 10.784' | - 7° 14.832' | 57.179737 | -7.247208 |
| Pen Mooring 26 | 83048 | 822111 | 57° 10.791' | - 7° 14.838' | 57.17985 | -7.247307 |
| Pen Mooring 27 | 83021 | 822225 | 57° 10.851' | - 7° 14.874' | 57.180851 | -7.247896 |
| Barge Centre | 83117 | 822201 | 57° 10.842' | - 7° 14.777' | 57.180703 | -7.246285 |
| Barge Moorings 1 | 83044 | 822378 | 57° 10.934' | - 7° 14.863' | 57.182236 | -7.247712 |
| Barge Moorings 2 | 83054 | 822424 | 57° 10.959' | - 7° 14.856' | 57.182654 | -7.247606 |
| Barge Moorings 3 | 83071 | 822432 | 57° 10.964' | - 7° 14.840' | 57.182737 | -7.247336 |
| Barge Moorings 4 | 83093 | 822437 | 57° 10.968' | - 7° 14.819' | 57.182797 | -7.24698 |
| Barge Moorings 5 | 83317 | 822387 | 57° 10.950' | - 7° 14.594' | 57.182505 | -7.243227 |
| Barge Moorings 6 | 83331 | 822363 | 57° 10.938' | - 7° 14.578' | 57.1823 | -7.242966 |
| Barge Moorings 7 | 83474 | 822192 | 57° 10.852' | - 7° 14.424' | 57.180869 | -7.240393 |
| Barge Moorings 8 | 83480 | 822178 | 57° 10.845' | - 7° 14.417' | 57.180748 | -7.240276 |
| Barge Moorings 9 | 83274 | 821933 | 57° 10.705' | - 7° 14.601' | 57.178414 | -7.243358 |
| Barge Moorings 10 | 83261 | 821929 | 57° 10.702' | - 7° 14.614' | 57.178369 | -7.243567 |
| Barge Moorings 11 | 83120 | 821893 | 57° 10.677' | - 7° 14.751' | 57.17795 | -7.245844 |
| Barge Moorings 12 | 83106 | 821892 | 57° 10.676' | - 7° 14.764' | 57.177931 | -7.246073 |
| Barge Moorings 13 | 83039 | 822162 | 57° 10.818' | - 7° 14.851' | 57.1803 | -7.24752 |
| Barge Moorings 14 | 83038 | 822171 | 57° 10.823' | - 7° 14.853' | 57.18038 | -7.247548 |
| Barge Moorings 15 | 83028 | 822200 | 57° 10.838' | - 7° 14.865' | 57.180632 | -7.247749 |
| Barge Moorings 16 | 83027 | 822210 | 57° 10.843' | - 7° 14.867' | 57.180721 | -7.247779 |