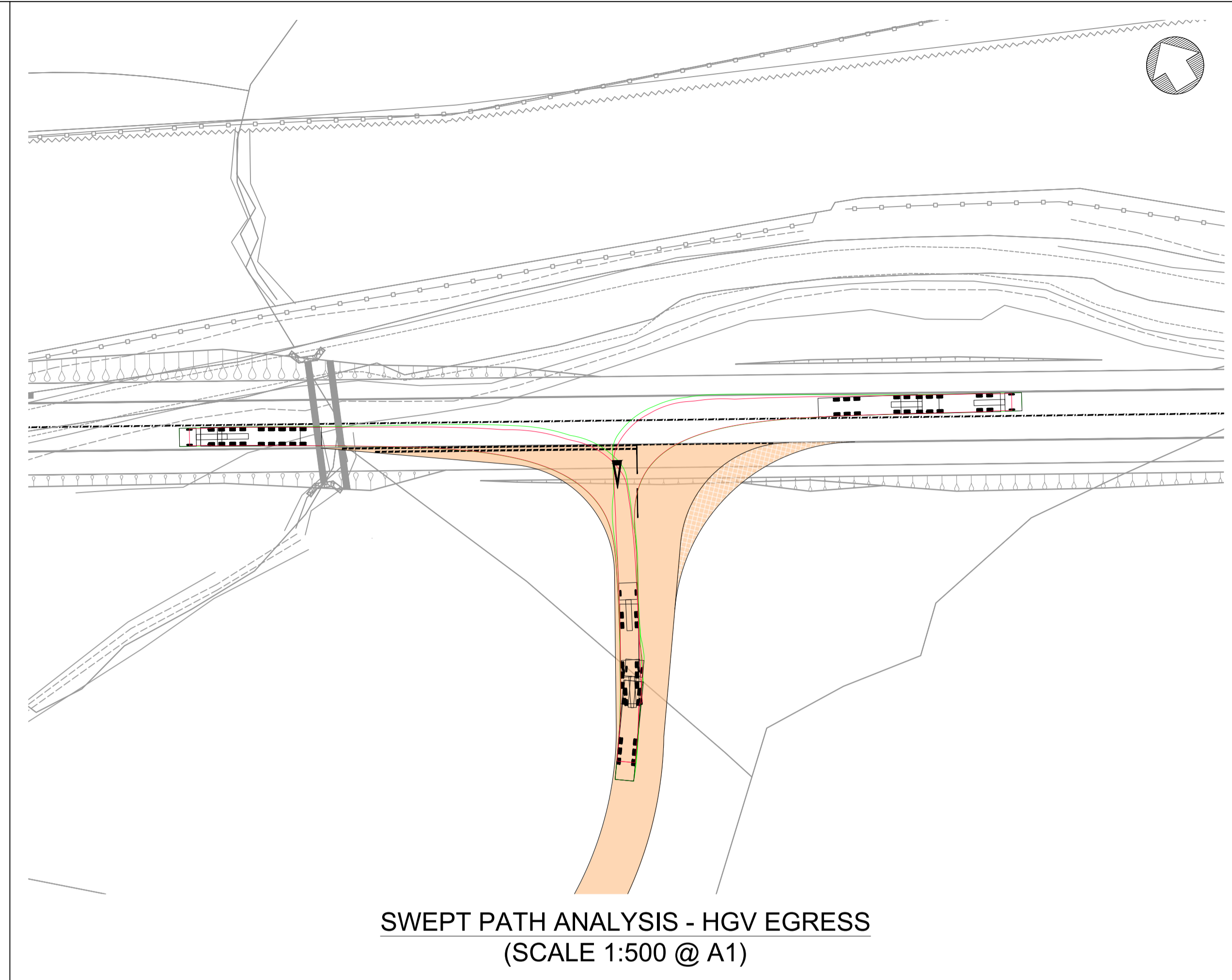
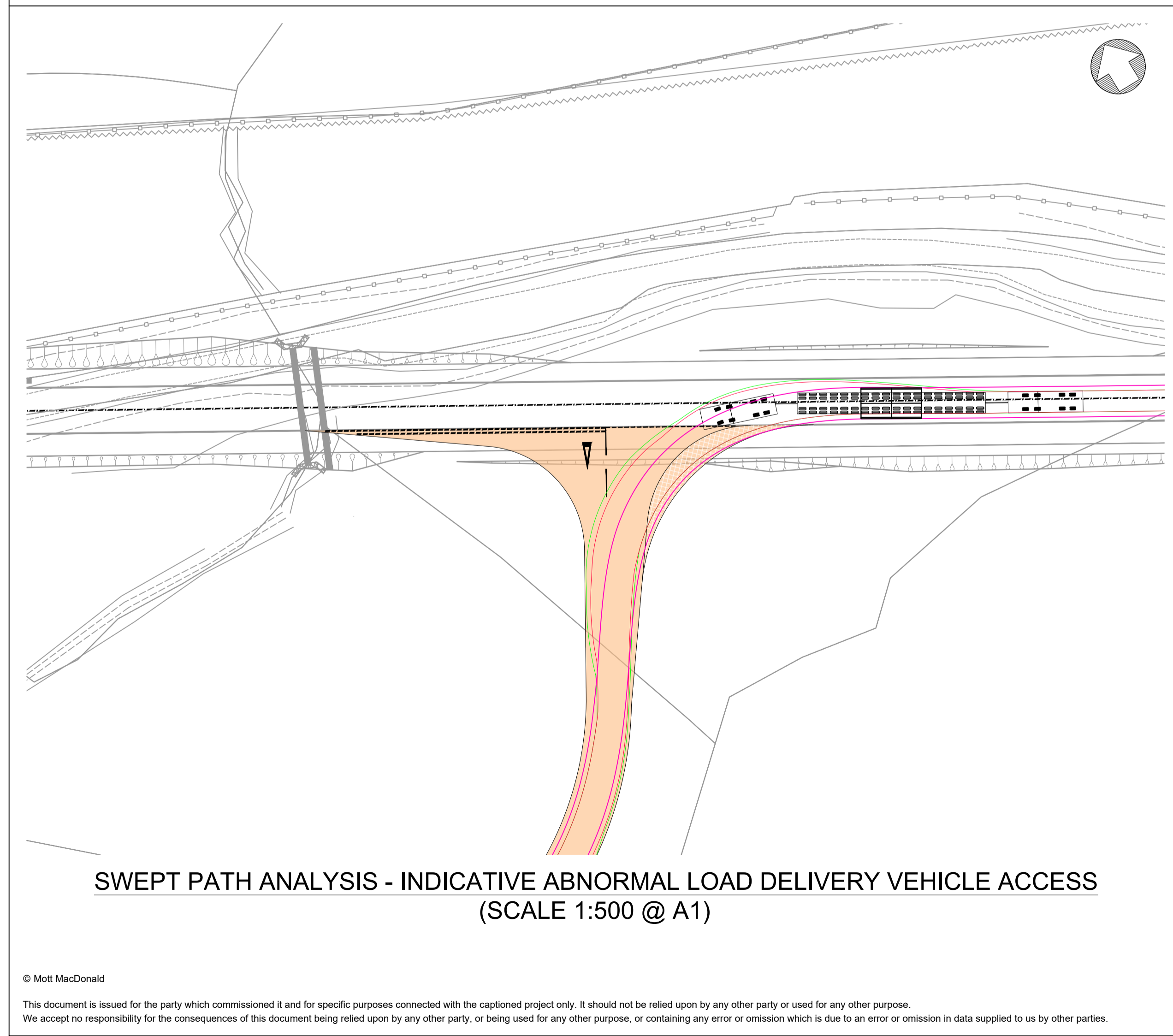


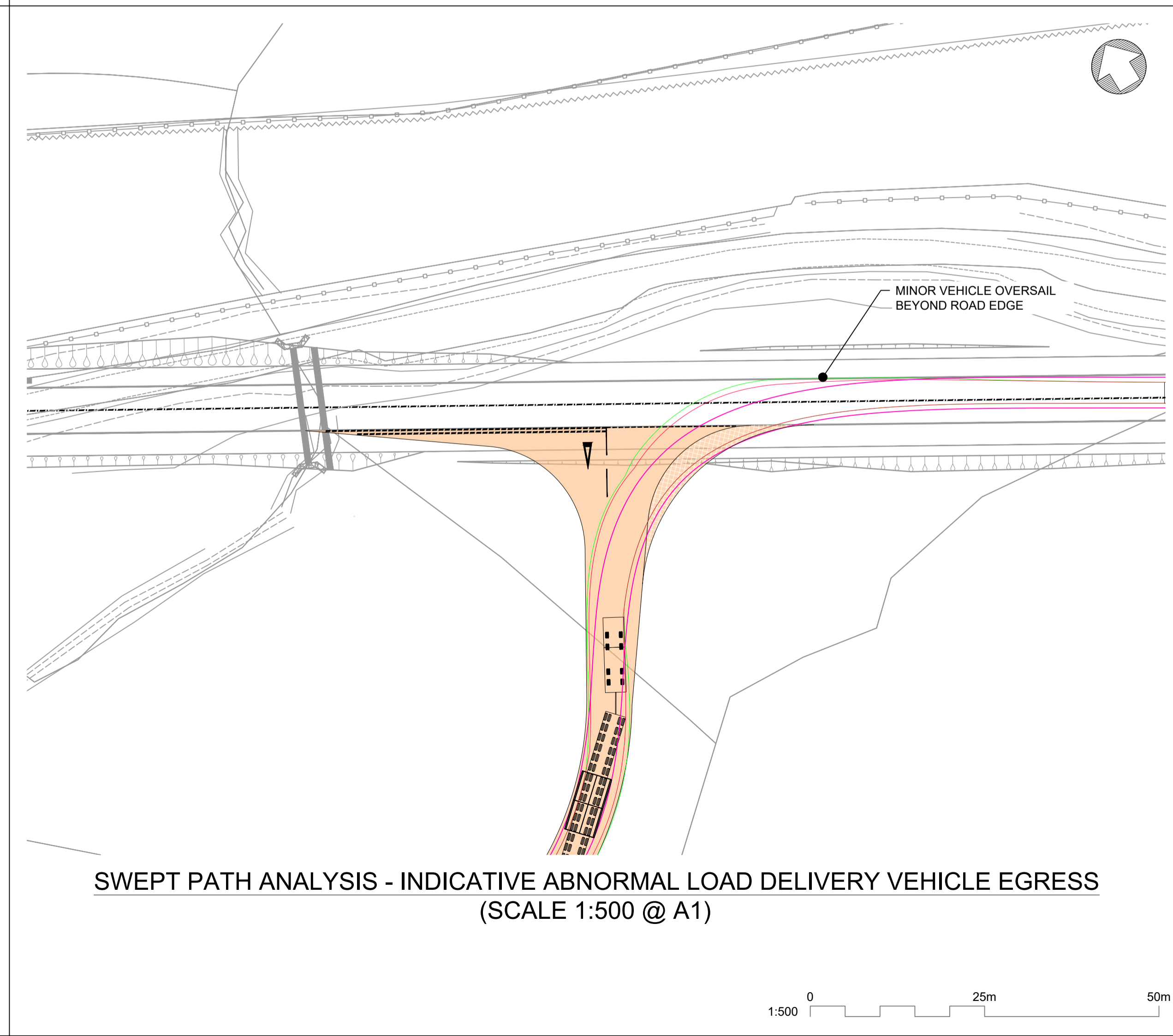
SWEPT PATH ANALYSIS - HGV ACCESS
(SCALE 1:500 @ A1)



SWEPT PATH ANALYSIS - HGV EGRESS
(SCALE 1:500 @ A1)



SWEPT PATH ANALYSIS - INDICATIVE ABNORMAL LOAD DELIVERY VEHICLE ACCESS
(SCALE 1:500 @ A1)



SWEPT PATH ANALYSIS - INDICATIVE ABNORMAL LOAD DELIVERY VEHICLE EGRESS
(SCALE 1:500 @ A1)

- Notes**
- All dimensions are in metres unless noted otherwise.
 - This drawing is to be read in conjunction with all relevant documents and drawings.
 - No unauthorised disclosure, storage and copying.
 - The information on this drawing is based on topographical survey information provided by SSEN.
 - UK max legal length articulated (16.5m) represents typical construction vehicle anticipated to use the new access.
 - The abnormal load vehicle configuration represents an indicative transformer components transported on an 18 axle flatbed trailer with two tractor units.

- Key to symbols**
- PERMANENT ACCESS ROAD
 - OVERRUN AREA FOR ABNORMAL LOAD DELIVERY VEHICLES
 - PATH OF VEHICLE AXLES / WHEELS
 - EXTENT OF VEHICLE BODY (CABIN / TRAILER)
 - EXTENT OF VEHICLE LOAD


Vehicle Profiles

18 Axle Flattop Trailer Abnormal Load Delivery Vehicle	
Overall Length	54.900m
Overall Width	3.000m
Overall Body Height	3.401m
Min Body Ground Clearance	0.325m
Max Track Width	3.000m
Lock to lock time	6.00s
Wall to Wall Turning Radius	25.877m
Max Legal Length (UK) Articulated Vehicle (16.5m)	
Overall Length	16.500m
Overall Width	2.550m
Overall Body Height	3.681m
Min Body Ground Clearance	0.411m
Max Track Width	2.500m
Lock to lock time	6.00s
Kerb to Kerb Turning Radius	6.530m

Reference drawings

Rev	Date	Drawn	Description	Ch'k'd	App'd
P03	05.02.25	EF	For Planning Submission	IM	DH
P02	07.11.24	IM	Preliminary Issue	IM	DH
P01	11.10.24	RB	Draft for Information	IM	DH

Status Stamp

FOR PLANNING SUBMISSION					
M					
MOTT MACDONALD					
		Victory House Trafalgar Place Brighton, BN1 4FY United Kingdom T +44 (0)1273 365000 W www.mottmac.com			
Client					
					

Project Name						LT14 Western Isles HVDC					
Site Name						Arnish Moor					
Title						LT14 Western Isles HVDC Proposed Site Access (Arnish Rd) Swept Path Analysis					
Designed	IM	Eng check	IM								
Drawn	RB	Coordination	HS								
Dwg check	IM	Approved	DH								
MMD Project Number				Scale at A1				Security			
109647				1:500				STD			
MML Drawing Number				Revision							
109647-MMD-ARNI-XX-DR-TP-0005				P03							
SSEN Drawing Number						TBC					

