

# Notice to Mariners

## Vessels and General Safety Advice

Scottish Hydro Electric Power Distribution (SHEPD)  
Skye to South Uist Marine Surveys

Date of issue: 10/12/2024

This Notice to Mariners supersedes that issued on 22<sup>nd</sup> November 2024.

Please be advised that A-2-Sea Solutions Ltd (on behalf of SHEPD) have now completed the marine surveys within the cable corridors described below. Mariners are thanked for their cooperation during the execution of the works.

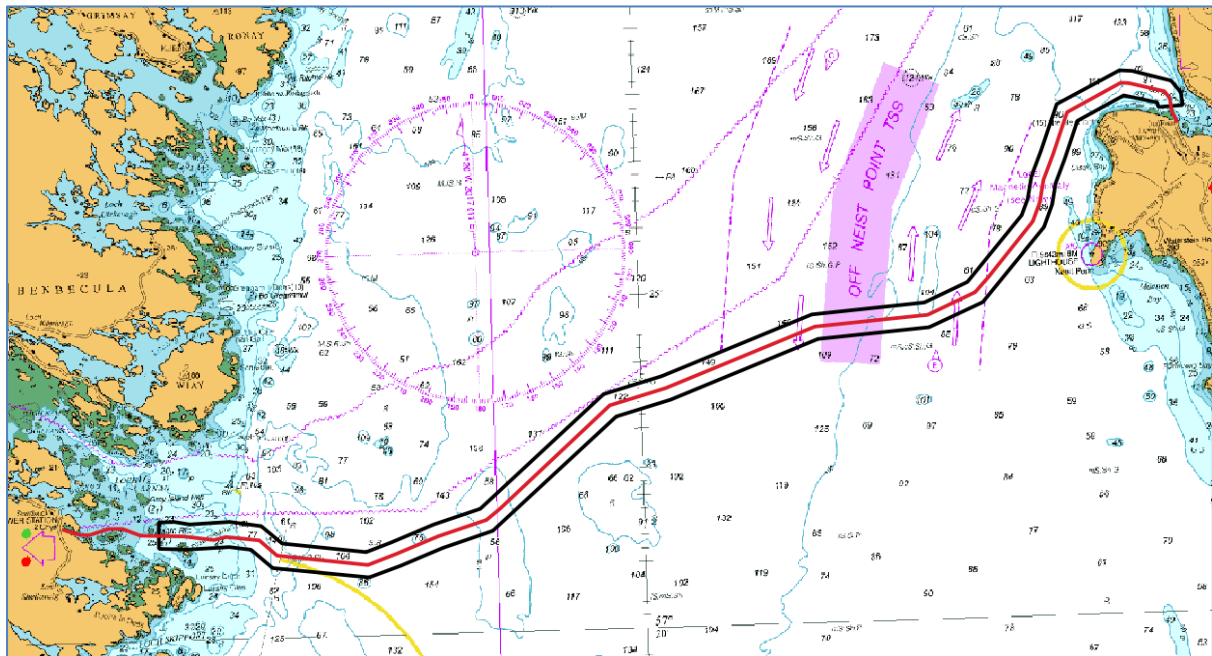


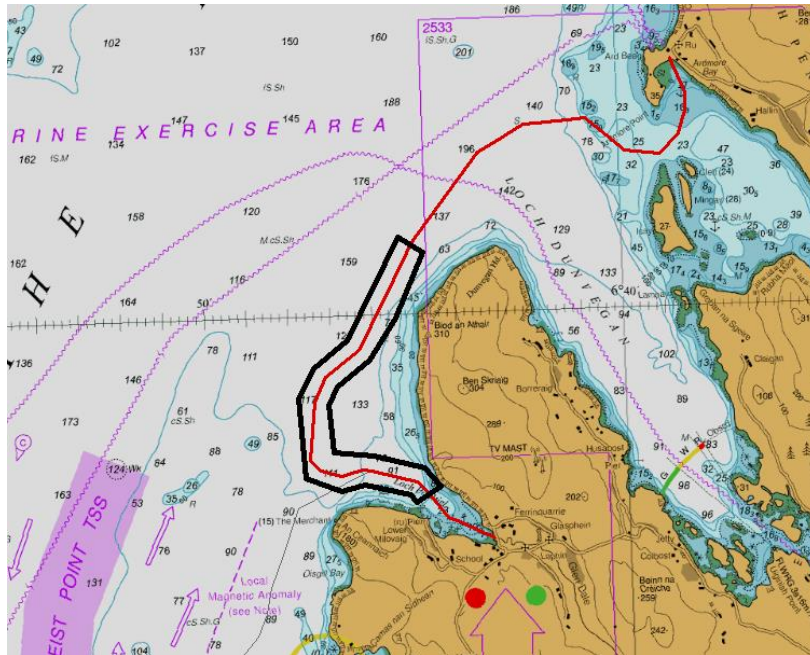
Figure 1: Survey Area Skye to Loch Carnan on South Uist Survey Corridor

The Skye to Loch Carnan on South Uist operations were concentrated across the cable corridor within the boundary defined by the following coordinates.

Table 1: Survey Area Skye to Loch Carnan on South Uist Survey Corridor

| Survey Area Skye to Loch Carnan on South Uist 1100m Survey Corridor |       |              |       |               |       |
|---|-------|--------------|-------|---------------|-------|
| Point   | Datum | Latitude     | D D.M | Longitude     | D D.M |
| 1   | WGS84 | 57;28.13758N |       | 006;46.39677W |       |
| 2   | WGS84 | 57;28.12344N |       | 006;46.05094W |       |
| 3   | WGS84 | 57;27.95828N |       | 006;44.96558W |       |
| 4   | WGS84 | 57;27.77870N |       | 006;44.70420W |       |

|    |       |              |               |
|----|-------|--------------|---------------|
| 5  | WGS84 | 57;27.58455N | 006;44.66385W |
| 6  | WGS84 | 57;27.56781N | 006;45.34302W |
| 7  | WGS84 | 57;27.63698N | 006;45.37186W |
| 8  | WGS84 | 57;27.75951N | 006;46.29968W |
| 9  | WGS84 | 57;27.40044N | 006;47.61234W |
| 10 | WGS84 | 57;26.84406N | 006;47.99396W |
| 11 | WGS84 | 57;26.83741N | 006;47.99879W |
| 12 | WGS84 | 57;26.47783N | 006;48.27444W |
| 13 | WGS84 | 57;26.16196N | 006;48.38894W |
| 14 | WGS84 | 57;25.82378N | 006;48.63814W |
| 15 | WGS84 | 57;24.72639N | 006;50.40971W |
| 16 | WGS84 | 57;24.37481N | 006;51.92599W |
| 17 | WGS84 | 57;24.25176N | 006;55.02794W |
| 18 | WGS84 | 57;23.40730N | 006;59.17710W |
| 19 | WGS84 | 57;23.17863N | 007;00.70463W |
| 20 | WGS84 | 57;21.51741N | 007;04.22665W |
| 21 | WGS84 | 57;21.28102N | 007;05.63065W |
| 22 | WGS84 | 57;21.03074N | 007;06.82180W |
| 23 | WGS84 | 57;20.86910N | 007;07.69903W |
| 24 | WGS84 | 57;21.04905N | 007;10.37518W |
| 25 | WGS84 | 57;21.33256N | 007;10.96453W |
| 26 | WGS84 | 57;21.38125N | 007;11.56717W |
| 27 | WGS84 | 57;21.35998N | 007;12.71977W |
| 28 | WGS84 | 57;21.38248N | 007;13.52250W |
| 29 | WGS84 | 57;21.77809N | 007;13.50841W |
| 30 | WGS84 | 57;21.77942N | 007;13.07416W |
| 31 | WGS84 | 57;21.73571N | 007;12.65162W |
| 32 | WGS84 | 57;21.75883N | 007;11.54278W |
| 33 | WGS84 | 57;21.68213N | 007;10.66304W |
| 34 | WGS84 | 57;21.41308N | 007;10.09287W |
| 35 | WGS84 | 57;21.24988N | 007;07.76490W |
| 36 | WGS84 | 57;21.38325N | 007;07.06985W |
| 37 | WGS84 | 57;21.63506N | 007;05.87142W |
| 38 | WGS84 | 57;21.85242N | 007;04.55986W |
| 39 | WGS84 | 57;23.52034N | 007;01.03721W |
| 40 | WGS84 | 57;23.76317N | 006;59.40886W |
| 41 | WGS84 | 57;24.62182N | 006;55.18028W |
| 42 | WGS84 | 57;24.74857N | 006;52.03687W |
| 43 | WGS84 | 57;25.03672N | 006;50.81957W |
| 44 | WGS84 | 57;26.01260N | 006;49.24842W |
| 45 | WGS84 | 57;26.25205N | 006;49.06884W |
| 46 | WGS84 | 57;26.59402N | 006;48.94152W |
| 47 | WGS84 | 57;26.97815N | 006;48.64783W |
| 48 | WGS84 | 57;27.66140N | 006;48.17509W |
| 49 | WGS84 | 57;28.13758N | 006;46.39677W |



**Figure 2: Survey Corridor Ardmore on Skye to Loch Pooltiel also on Skye**

The Ardmore on Skye to Loch Pooltiel on Skye operations were concentrated across the cable corridor within the boundary defined by the following coordinates.

**Table 2: Survey Route Ardmore on Skye to Loch Pooltiel also on Skye**

| Survey Route Ardmore on Skye to Loch Pooltiel also on Skye 1100m Survey Corridor |       |            |       |             |       |
|--|-------|------------|-------|-------------|-------|
| Point  | Datum | Latitude   | D D.M | Longitude   | D D.M |
| 1  | WGS84 | 57;30.776N |       | 006;44.743W |       |
| 2  | WGS84 | 57;29.949N |       | 006;45.443W |       |
| 3  | WGS84 | 57;29.422N |       | 006;46.083W |       |
| 4  | WGS84 | 57;29.089N |       | 006;46.877W |       |
| 5  | WGS84 | 57;28.859N |       | 006;47.097W |       |
| 6  | WGS84 | 57;28.246N |       | 006;47.019W |       |
| 7  | WGS84 | 57;28.18N  |       | 006;46.056W |       |
| 8  | WGS84 | 57;28.011N |       | 006;44.879W |       |
| 9  | WGS84 | 57;27.775N |       | 006;44.503W |       |
| 10   | WGS84 | 57;27.574N |       | 006;45.086W |       |
| 11   | WGS84 | 57;27.673N |       | 006;45.23W  |       |
| 12   | WGS84 | 57;27.823N |       | 006;46.288W |       |
| 13   | WGS84 | 57;27.744N |       | 006;46.867W |       |
| 14   | WGS84 | 57;27.918N |       | 006;47.705W |       |
| 15   | WGS84 | 57;28.952N |       | 006;47.817W |       |
| 16   | WGS84 | 57;29.332N |       | 006;47.441W |       |
| 17   | WGS84 | 57;29.677N |       | 006;46.626W |       |
| 18   | WGS84 | 57;30.983N |       | 006;45.331W |       |
| 19   | WGS84 | 57;30.776N |       | 006;44.743W |       |

## Fisheries Liaison Officers

Fishing liaison for the operations were co-ordinated by Blackhall & Powis Ltd. For any commercial fishery queries please contact the Company Fishing Liaison Officers (CFLOs) :

Tommy Finn 07787 503119 [tommy.finn@blackhallpowis.com](mailto:tommy.finn@blackhallpowis.com)

The local Fishing Industries Representative (FIR) is also in place to liaise with the vessels and fishing operations in the survey area.

Ewen Grant 07990 506846 [ewen@ewengrant.com](mailto:ewen@ewengrant.com)

## Further Details

Further enquiries should be addressed to the following people in the following order:

| Name               | Contact Number               | Email  |
|--------------------|------------------------------|--|
| Christopher Briggs | +44(0) 1794 830 909 (Office) | <a href="mailto:Chris.briggs@a2sea.co.uk">Chris.briggs@a2sea.co.uk</a> |
| Liam Flynn         | +44(0) 1794 830 909 (Office) | <a href="mailto:Liam.flynn@a2sea.co.uk">Liam.flynn@a2sea.co.uk</a>     |

## Distribution List

Any stakeholders identified within the relevant Fishing Liaison Management Action Plan (FLMAP), will be included on the distribution list for this NtM.