



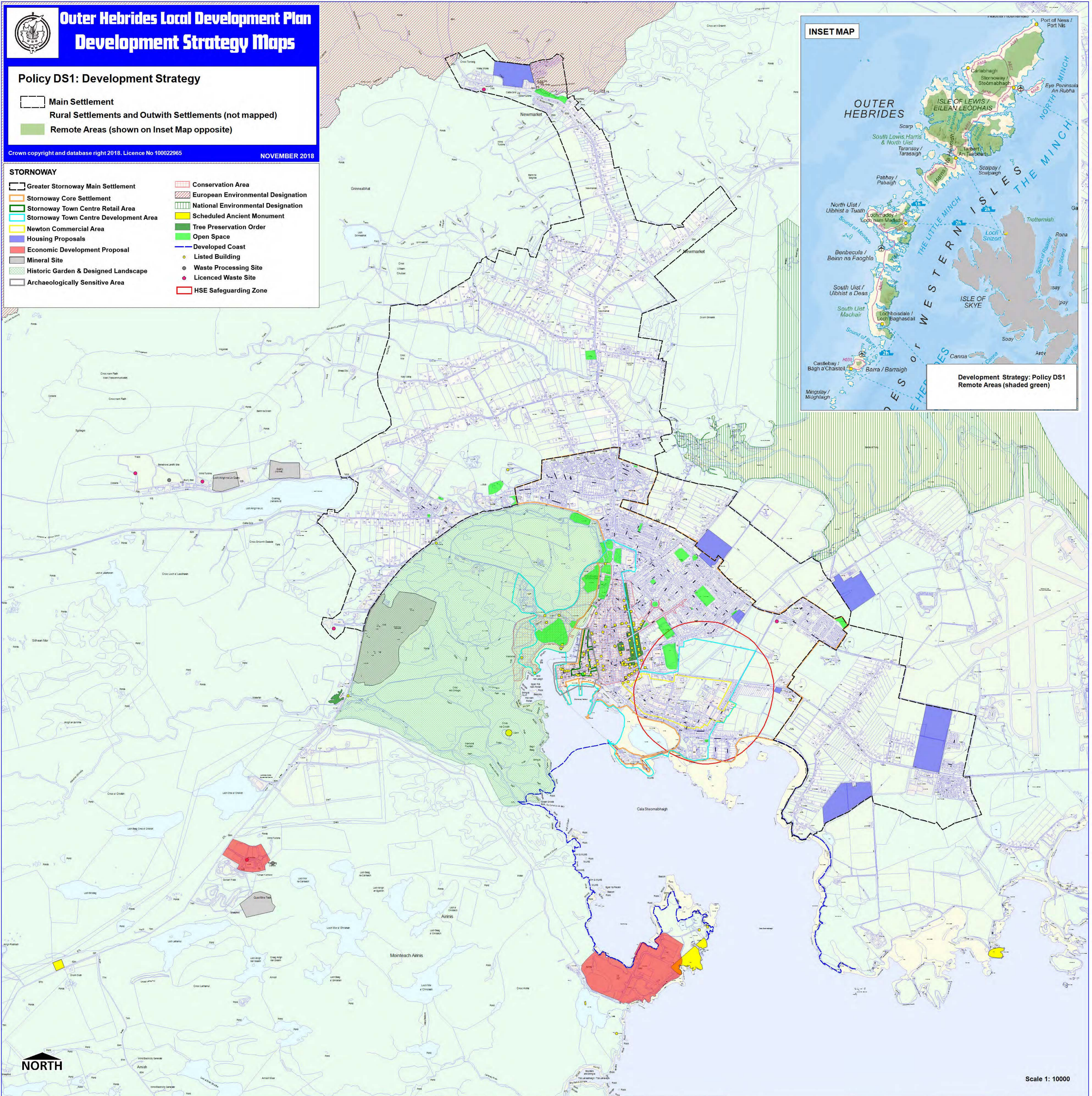
# Outer Hebrides Local Development Plan Development Strategy Maps

## Policy DS1: Development Strategy

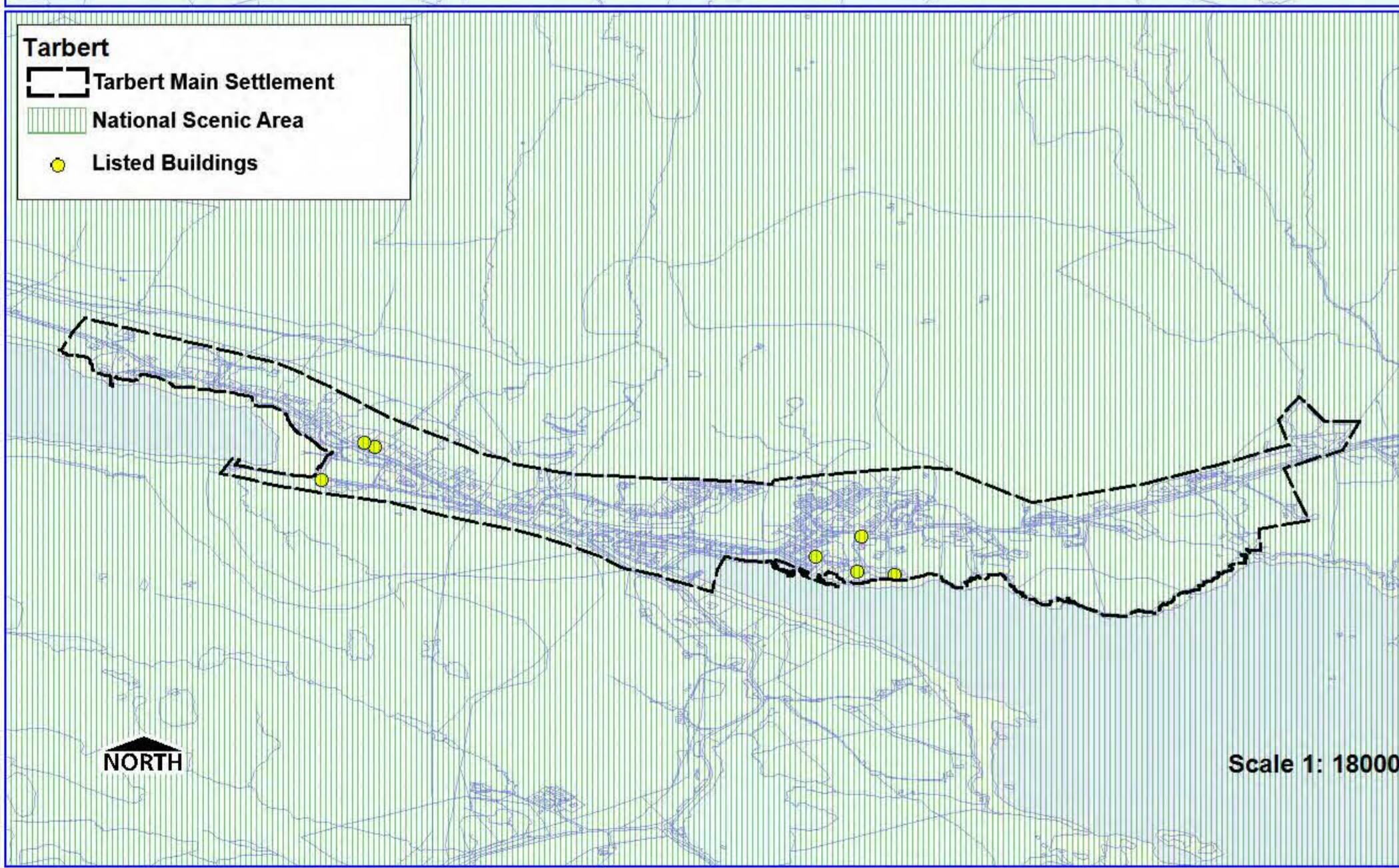
- Main Settlement
- Rural Settlements and Outwith Settlements (not mapped)
- Remote Areas (shown on Inset Map opposite)

Crown copyright and database right 2018. Licence No 100022965 NOVEMBER 2018

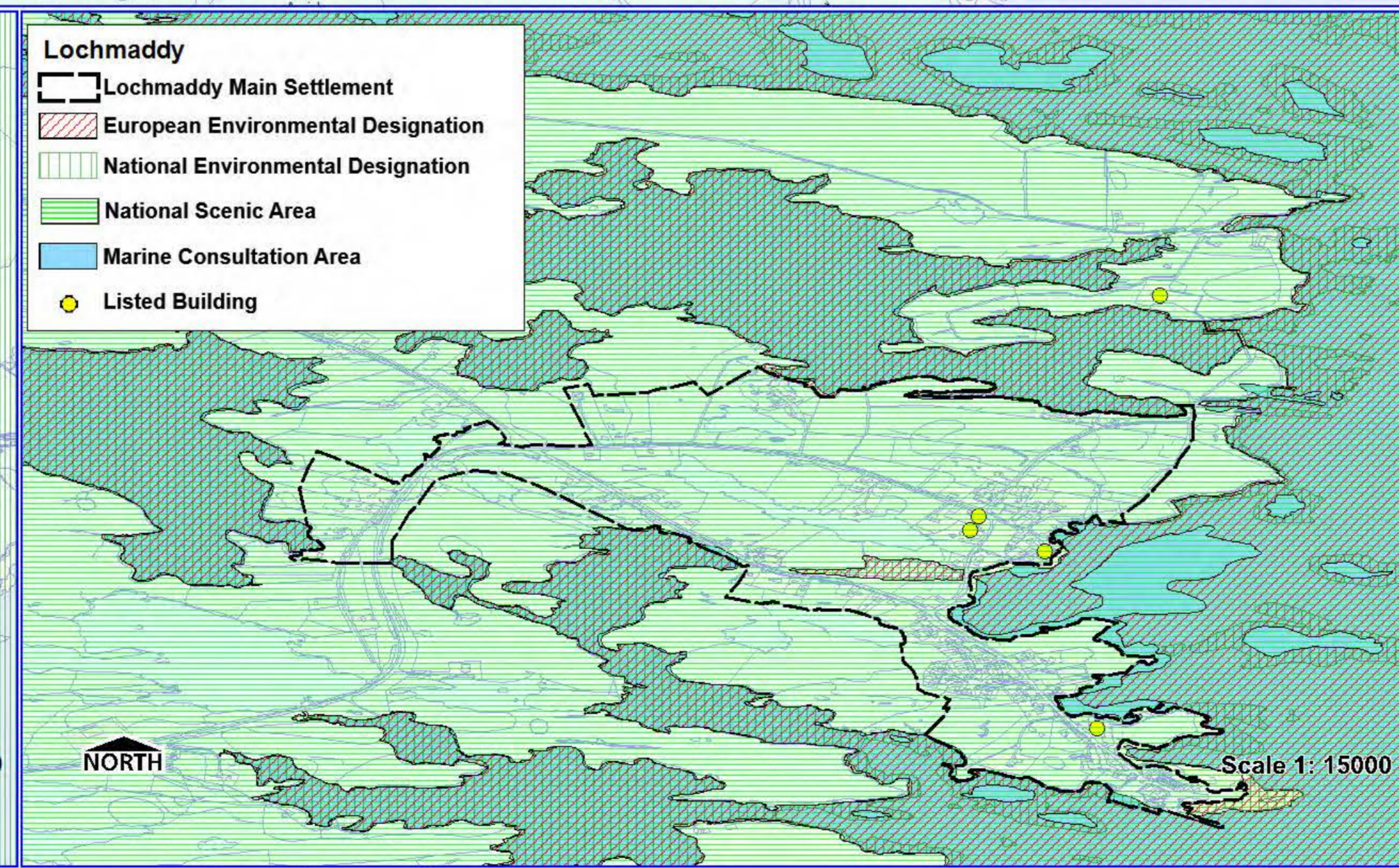
- ### STORNOWAY
- Greater Stornoway Main Settlement
  - Stornoway Core Settlement
  - Stornoway Town Centre Retail Area
  - Stornoway Town Centre Development Area
  - Newton Commercial Area
  - Housing Proposals
  - Economic Development Proposal
  - Mineral Site
  - Historic Garden & Designed Landscape
  - Archaeologically Sensitive Area
  - Conservation Area
  - European Environmental Designation
  - National Environmental Designation
  - Scheduled Ancient Monument
  - Tree Preservation Order
  - Open Space
  - Developed Coast
  - Listed Building
  - Waste Processing Site
  - Licensed Waste Site
  - HSE Safeguarding Zone



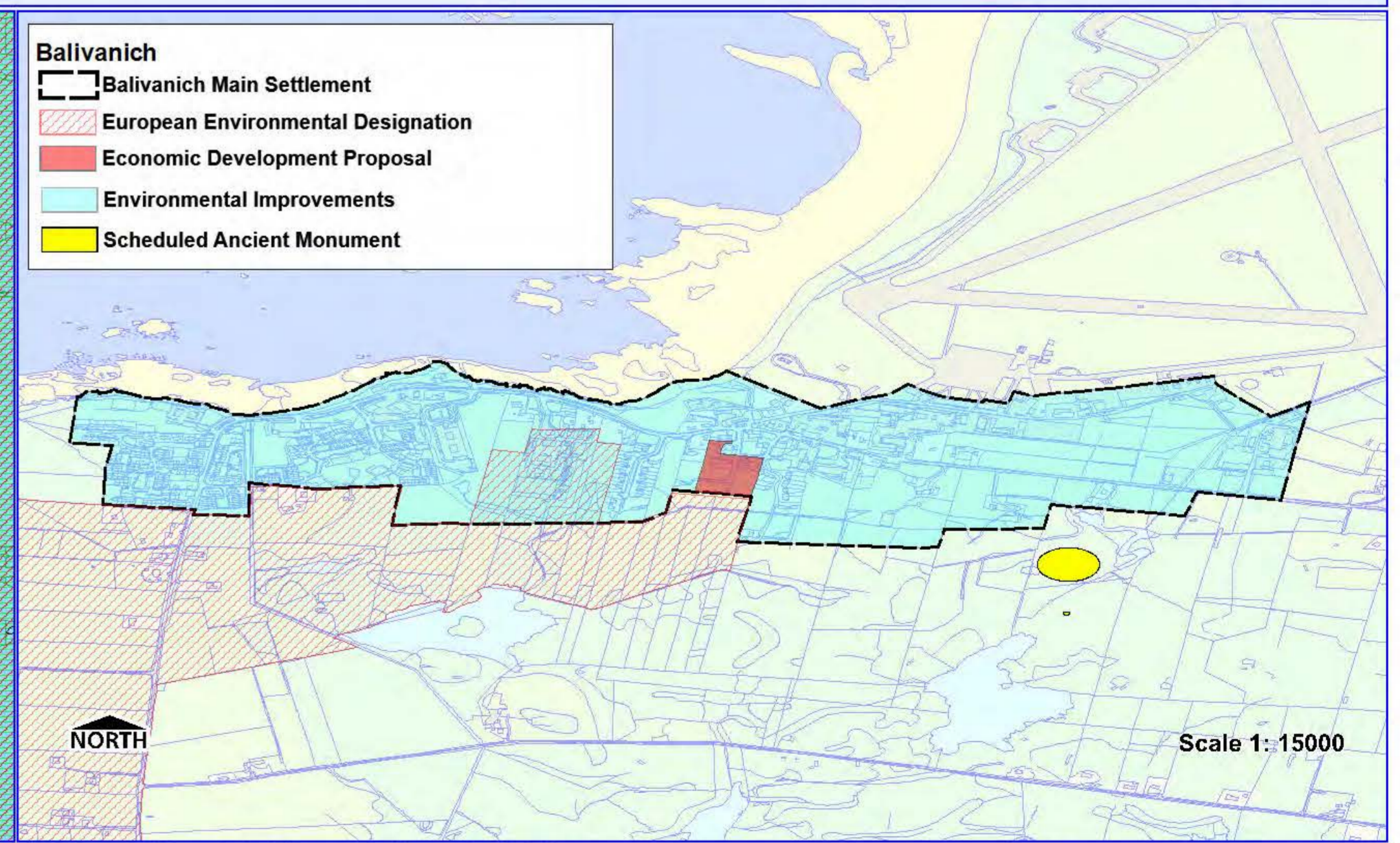
Scale 1: 10000



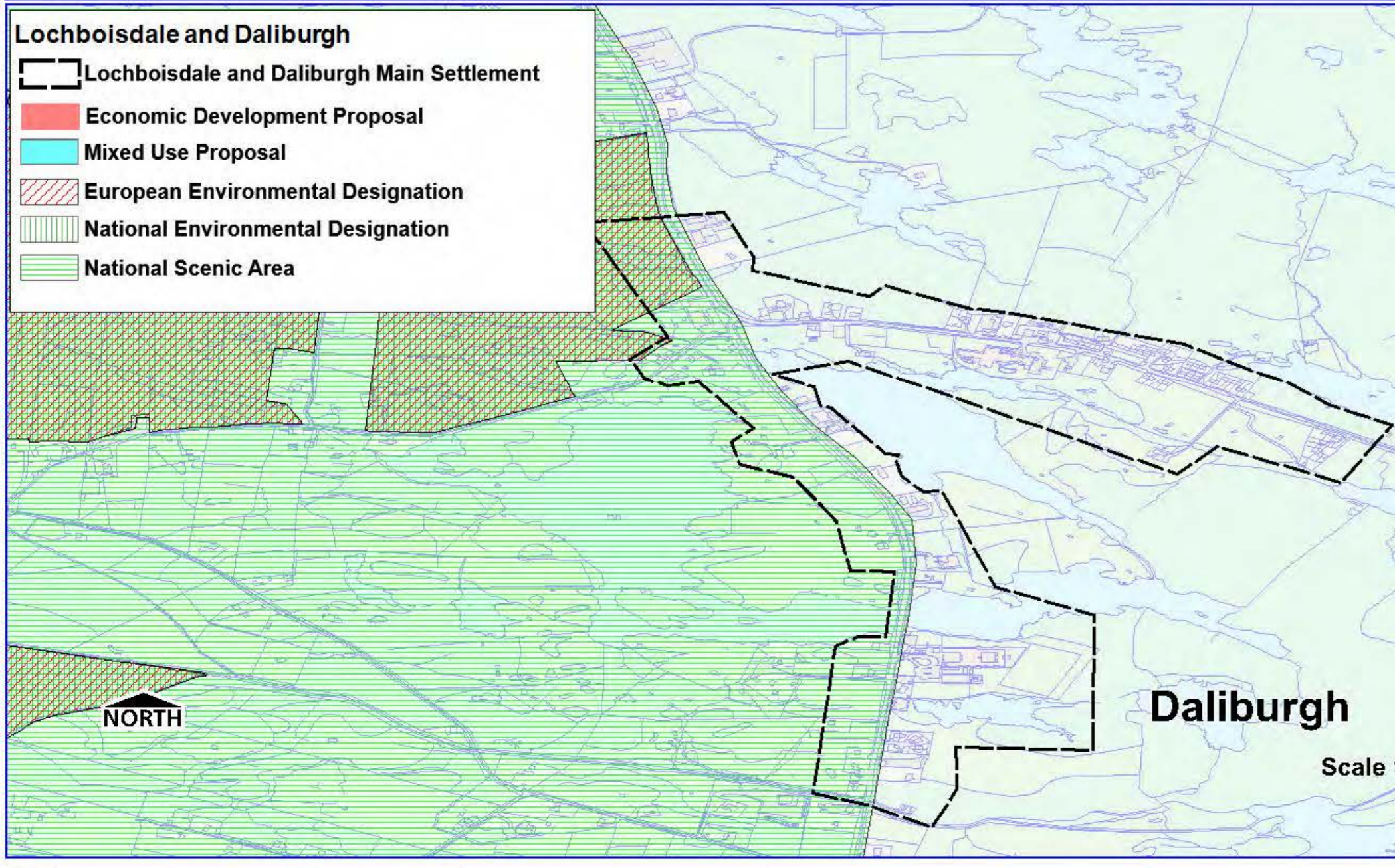
Scale 1: 18000



Scale 1: 15000



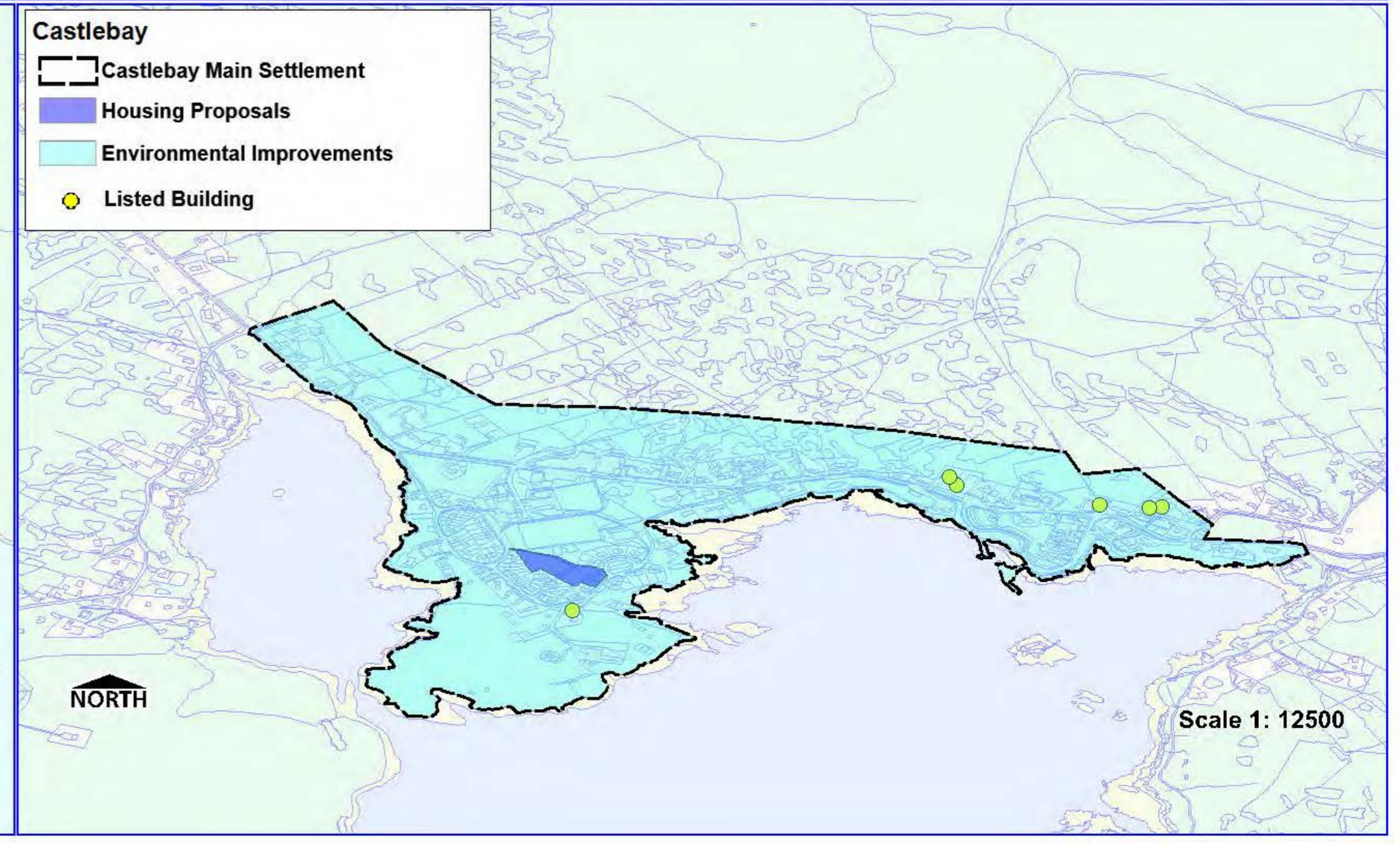
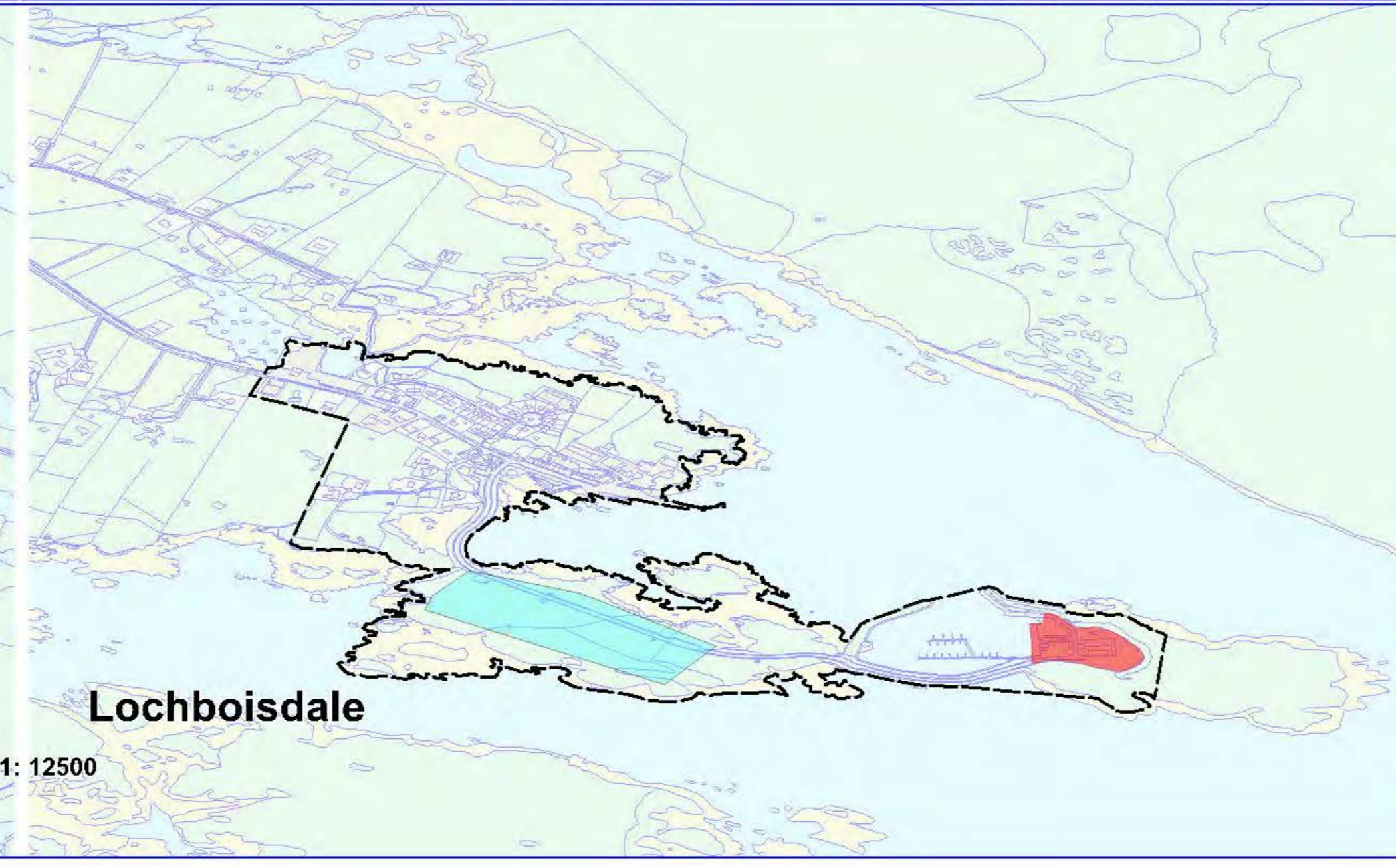
Scale 1: 15000



Daliburgh

Lochboisdale

Scale 1: 12500



Scale 1: 12500