

Notice to Mariners

Vessels and General Safety Advice

Scottish Hydro Electric Power Distribution (SHEPD) Skye to South Uist Marine Surveys

Date of issue: 22/11/2024

This Notice to Mariners supersedes that issued on 15th November 2024. Due to reduced scope of works remaining, the working corridor has been reduced accordingly. This NtM reflects these changes.

Please be advised that A-2-Sea Solutions Ltd (on behalf of SHEPD) are undertaking a marine survey within the cable corridors described below. Surveys will utilise vessel to complete survey operations:

- Mintaka I

Operations will have a planned minimum duration of 5 days, weather permitting.

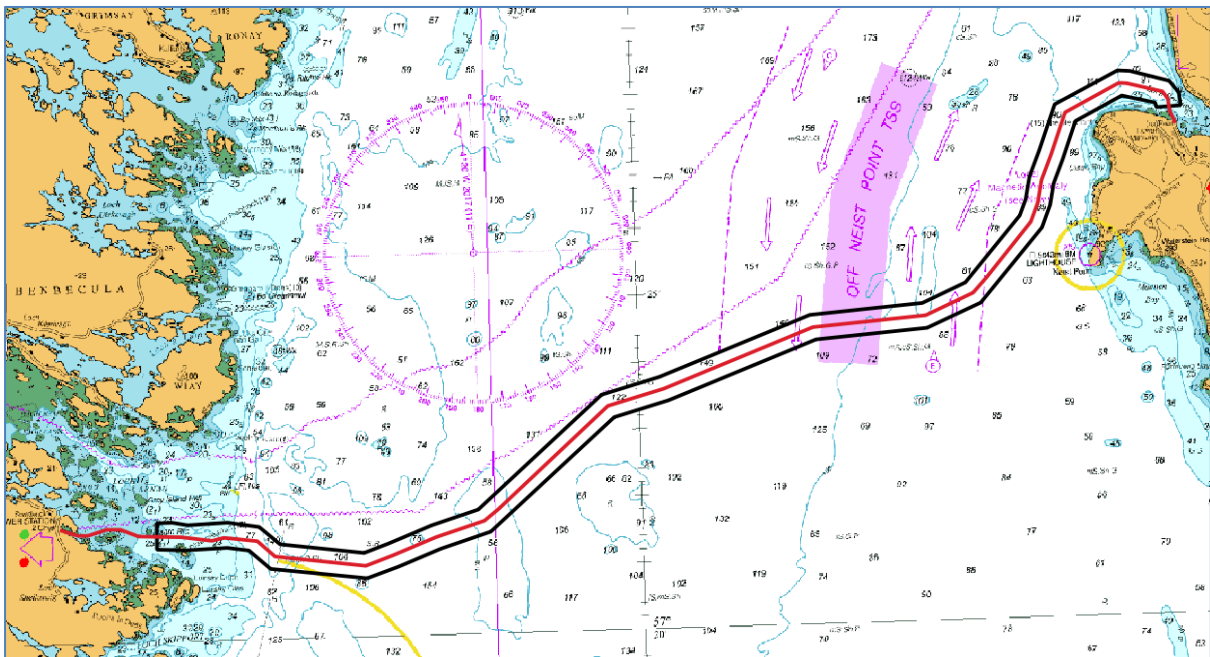


Figure 1: Survey Area Skye to Loch Carnan on South Uist Survey Corridor

The Skye to Loch Carnan on South Uist operations will be concentrated across the cable corridor within the boundary defined by the following coordinates.

Table 1: Survey Area Skye to Loch Carnan on South Uist Survey Corridor

Survey Area Skye to Loch Carnan on South Uist 1100m Survey Corridor					
Point	Datum	Latitude	D D.M	Longitude	D D.M
1	WGS84	57;28.13758N		006;46.39677W	
2	WGS84	57;28.12344N		006;46.05094W	
3	WGS84	57;27.95828N		006;44.96558W	
4	WGS84	57;27.77870N		006;44.70420W	
5	WGS84	57;27.58455N		006;44.66385W	
6	WGS84	57;27.56781N		006;45.34302W	
7	WGS84	57;27.63698N		006;45.37186W	
8	WGS84	57;27.75951N		006;46.29968W	
9	WGS84	57;27.40044N		006;47.61234W	
10	WGS84	57;26.84406N		006;47.99396W	
11	WGS84	57;26.83741N		006;47.99879W	
12	WGS84	57;26.47783N		006;48.27444W	
13	WGS84	57;26.16196N		006;48.38894W	
14	WGS84	57;25.82378N		006;48.63814W	
15	WGS84	57;24.72639N		006;50.40971W	
16	WGS84	57;24.37481N		006;51.92599W	
17	WGS84	57;24.25176N		006;55.02794W	
18	WGS84	57;23.40730N		006;59.17710W	
19	WGS84	57;23.17863N		007;00.70463W	
20	WGS84	57;21.51741N		007;04.22665W	
21	WGS84	57;21.28102N		007;05.63065W	
22	WGS84	57;21.03074N		007;06.82180W	
23	WGS84	57;20.86910N		007;07.69903W	
24	WGS84	57;21.04905N		007;10.37518W	
25	WGS84	57;21.33256N		007;10.96453W	
26	WGS84	57;21.38125N		007;11.56717W	
27	WGS84	57;21.35998N		007;12.71977W	
28	WGS84	57;21.38248N		007;13.52250W	
29	WGS84	57;21.77809N		007;13.50841W	
30	WGS84	57;21.77942N		007;13.07416W	
31	WGS84	57;21.73571N		007;12.65162W	
32	WGS84	57;21.75883N		007;11.54278W	
33	WGS84	57;21.68213N		007;10.66304W	
34	WGS84	57;21.41308N		007;10.09287W	
35	WGS84	57;21.24988N		007;07.76490W	
36	WGS84	57;21.38325N		007;07.06985W	
37	WGS84	57;21.63506N		007;05.87142W	
38	WGS84	57;21.85242N		007;04.55986W	

39	WGS84	57;23.52034N	007;01.03721W
40	WGS84	57;23.76317N	006;59.40886W
41	WGS84	57;24.62182N	006;55.18028W
42	WGS84	57;24.74857N	006;52.03687W
43	WGS84	57;25.03672N	006;50.81957W
44	WGS84	57;26.01260N	006;49.24842W
45	WGS84	57;26.25205N	006;49.06884W
46	WGS84	57;26.59402N	006;48.94152W
47	WGS84	57;26.97815N	006;48.64783W
48	WGS84	57;27.66140N	006;48.17509W
49	WGS84	57;28.13758N	006;46.39677W

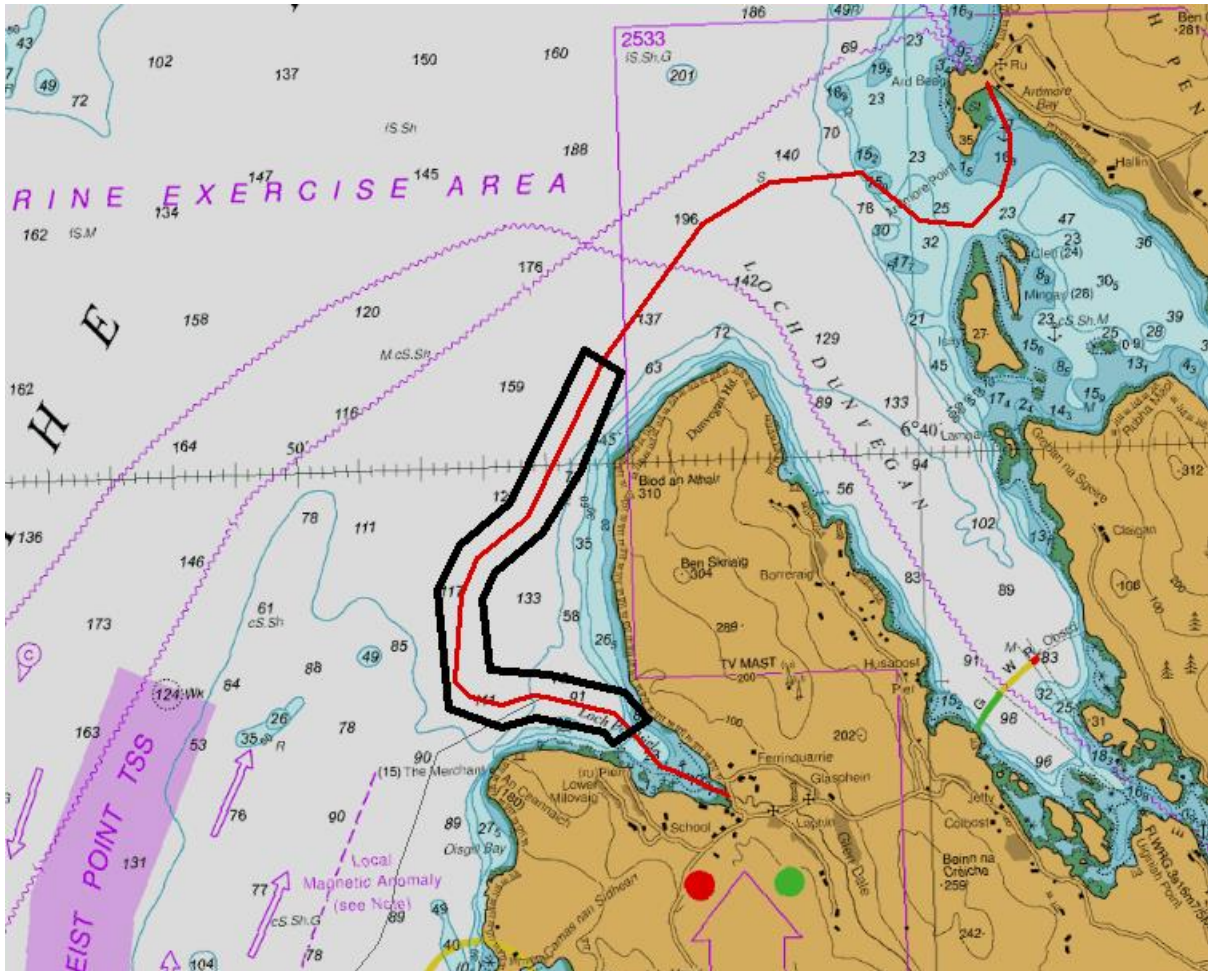


Figure 2: Survey Corridor Ardmøre on Skye to Loch Pooltiel also on Skye


The Ardmøre on Skye to Loch Pooltiel on Skye operations will be concentrated across the cable corridor within the boundary defined by the following coordinates.

Table 2: Survey Route Ardmøre on Skye to Loch Pooltiel also on Skye

Survey Route Ardmøre on Skye to Loch Pooltiel also on Skye 1100m Survey Corridor					
Point	Datum	Latitude	D D.M	Longitude	D D.M
1	WGS84	57;30.776N		006;44.743W	
2	WGS84	57;29.949N		006;45.443W	
3	WGS84	57;29.422N		006;46.083W	
4	WGS84	57;29.089N		006;46.877W	
5	WGS84	57;28.859N		006;47.097W	
6	WGS84	57;28.246N		006;47.019W	
7	WGS84	57;28.18N		006;46.056W	
8	WGS84	57;28.011N		006;44.879W	

9	WGS84	57;27.775N	006;44.503W
10	WGS84	57;27.574N	006;45.086W
11	WGS84	57;27.673N	006;45.23W
12	WGS84	57;27.823N	006;46.288W
13	WGS84	57;27.744N	006;46.867W
14	WGS84	57;27.918N	006;47.705W
15	WGS84	57;28.952N	006;47.817W
16	WGS84	57;29.332N	006;47.441W
17	WGS84	57;29.677N	006;46.626W
18	WGS84	57;30.983N	006;45.331W
19	WGS84	57;30.776N	006;44.743W

The operations will be undertaken by the vessel Mintaka 1 pictured below. The vessel may operate primarily from Ullapool but may use other ports along the coastlines, such as Stornoway.

Vessel Photo	Vessel Description
<p>Mintaka</p> 	<p>The Mintaka 1 is a multi-purpose survey vessel. 40 m in length with a beam of 6m and a draft of 2 m; transit speed of 12 kts and a survey speed of 4-6 kts. Operating on a 24-hour basis. Mintaka call sign is HO6142.</p> <p>Contact: Vsat +31 223705008 / Mob: +48 602421456</p>

Survey Description

The survey will involve collection of high-resolution geophysical seabed data and In-situ geotechnical sediment testing.

Other vessels should maintain an appropriate and safe distance of 500 m when passing the Mintaka 1 vessel whilst undertaking operations and should pass at the lowest possible speed to avoid vessel wash effects. The vessel(s) will be working 24-hour operations and will display appropriate day shapes and lights during reduced visibility and night operations. The vessel will also monitor VHF Channels 16 and 12.

Primary Survey Equipment

Primary equipment	Towed, Hull mounted, Sampling	Approximate tow length (if applicable)	Vessel
Multibeam Echosounder	Hull mounted	N/A	Mintaka
Sidescan Sonar	Towed	50-600m	Mintaka
Magnetometer Array	Towed	50-600m	Mintaka
Sub bottom Profiler	Hull mounted	N/A	Mintaka
Grab sampler	Sampling	N/A	Mintaka
Drop Down Video	Towed	50-100m	Mintaka
CPT	Sampling	N/A	Mintaka
Vibrocore	Sampling	N/A	Mintaka

Contact Details

The vessel contact details are given in the tables below

VESSEL 1- Mintaka	
Call sign	HO6142
Bridge	Telephone Number: +31 (0) 223 705 008 (Sat)
Offshore manager / Party Chief	Tudor Sartain
Email	Gavin.loveridge@a2sea.co.uk
Onshore Site Manager	Gavin Loveridge

Fisheries Liaison Officers

Fishing liaison for the operations will be co-ordinated by Blackhall & Powis Ltd. For any commercial fishery queries please contact the Company Fishing Liaison Officers (CFLOs) :

Tommy Finn 07787 503119 tommy.finn@blackhallpowis.com

The local Fishing Industries Representative (FIR) will also be in place to liaise with the vessels and fishing operations in the survey area.

Ewen Grant 07990 506846 ewen@ewengrant.com

Further Details

Further enquiries should be addressed to the following people in the following order:

Name	Contact Number	Email
Christopher Briggs	+44(0) 1794 830 909 (Office)	Chris.briggs@a2sea.co.uk
Liam Flynn	+44(0) 1794 830 909 (Office)	Liam.flynn@a2sea.co.uk

Distribution List

Any stakeholders identified within the relevant Fishing Liaison Management Action Plan (FLMAP), will be included on the distribution list for this NtM.

Legal Notice

Please be advised that this Notice to Mariners should be treated as official notice of the nature, duration and location of the works which are scheduled to take place. During the period of this notice, we request that you plan your activities around our short-term, temporary activities.

Any failure to remove equipment or entry into the identified location in a manner that would constitute a hazard would be a breach of your duties of safe seamanship as described in the Convention on International Regulations for Preventing Collisions at Sea 1972 and/or the Merchant Shipping Act 1995 and may result in removal of the relevant equipment. Failure to remove equipment or entry into the identified location in a manner that would constitute a hazard may constitute a breach of duty of care at common law, and a failure to protect submarine cables for successful seabed user co-existence under Scotland's National Marine Plan.