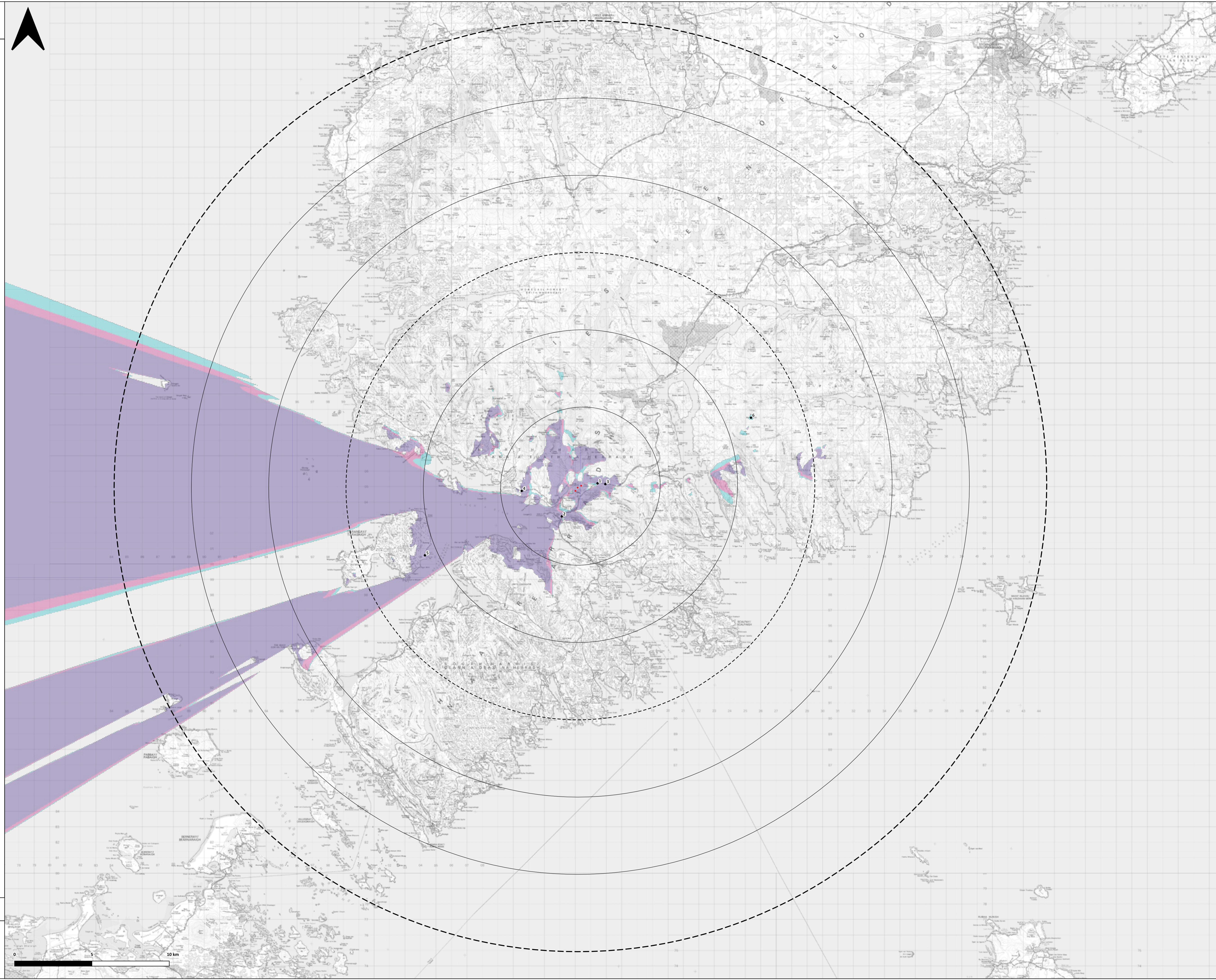


- Key:
- Proposed Turbine Locations
 - 30km Study Area
 - 15km from Turbines
 - 5km Intervals from Turbines
 - Three Turbines Theoretically Visible
 - Two Turbines Theoretically Visible
 - One Turbine Theoretically Visible
 - Viewpoint Locations
- 1 - A859 at Loch a'Mhorghain
 - 2 - A859 Overlooking Ceann an Ora
 - 3 - A859 at Loch na Ciste
 - 4 - B887 at Tolmachan
 - 5 - Taransay
 - 6 - Beinn Mhor



Reproduced from Ordnance Survey digital map data © Crown Copyright 2024. All rights reserved. Licence number 0100031673

Client: **Constantine Wind Energy (UK) Ltd**
Drawing By: **Green Cat Renewables Ltd**

Document Number: **C5507-442/Figure 6.3**
Version: **1.0**
Author: **ABU/OSE**
Checked By: **IFE**
Approved By: **AWA**
Date: **08/02/2024**

