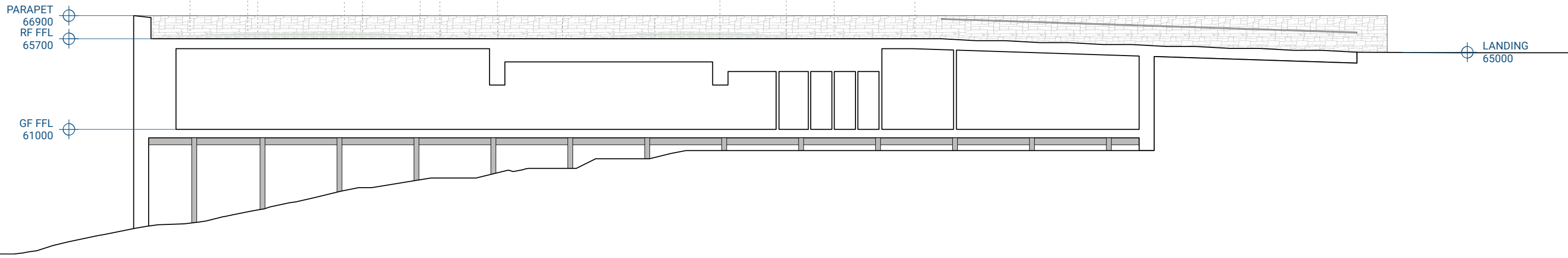
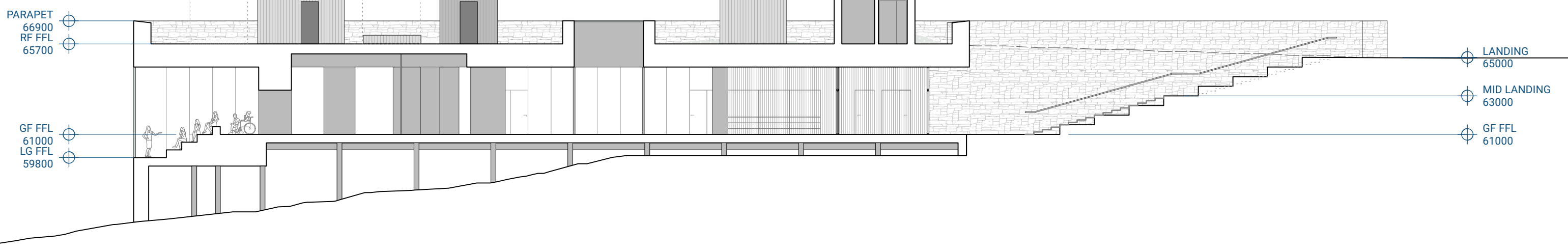


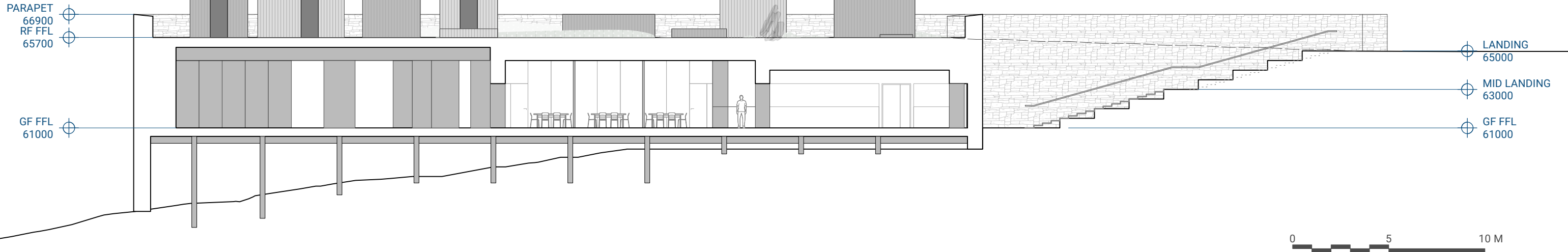
1 Section AA
Scale: 1:200




2 Section BB
Scale: 1:200



3 Section CC
Scale: 1:200



 <p>Glasgow 1.06 McLellan Works, 274 Sauchiehall Street, Glasgow G2 3JH +44 (0)141 550 1401</p> <p>Skye Fàs, Sabhal Mòr Ostaig Sléac, Isle of Skye IV44 6BQ +44 (0)1471 833 300</p> <p>Reiulf Ramstad Arkitekter</p>	<p>A 01/02/2024 Access step landing heights adjusted</p>	<p>PROJECT NAME IONAD HIORT</p> <p>NOTES © Dualchas Architects info@dualchas.com To be read in conjunction with the specification and all relevant drawings. Contractor to check all dimensions on site. Do not scale from this drawing. Architect to be advised of any variation between the drawings and site conditions.</p>	<p>DRAWING SET PLANNING</p> <p>DRAWING TITLE LONG SECTIONS</p>	<p>DRAWING NUMBER 924_301</p> <p>DRAWN / CHECKED MOC / RF</p>	<p>DATE 01/02/2024</p> <p>SCALE @A3 1:200</p>
	<p>REV DATE NOTE</p>				