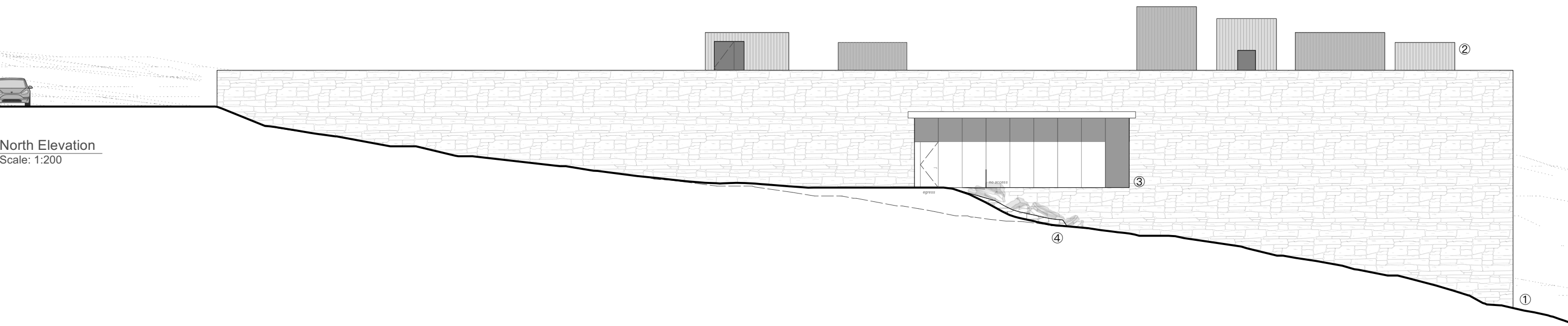



1 South Elevation
Scale: 1:200



2 North Elevation
Scale: 1:200

- NOTES**
- ① Random coursed walling in a mix of locally quarried, and locally reclaimed stone, with precast concrete lintels and coping details
 - ② Open jointed timber rainscreen clad roof pavilion structures with natural earthen stain
 - ③ Recessed metal framed glazed curtain walling
 - ④ Low drystone retaining walls to facilitate manipulation of topography at thresholds
 - ⑤ Stone paved footpath between levels, cut into terrain on approach to opening
 - ⑥ Stone paved terrace



 <p>Glasgow 1.06 McLellan Works, 274 Sauchiehall Street, Glasgow G2 3EH +44 (0)141 550 1401</p> <p>Skye Fàs, Sabhal Mòr Ostaig Skew, Isle of Skye IV44 8PQ +44 (0)1471 833 300</p> <p>Reiulf Ramstad Arkitekter</p>	<p>A 01/02/2024 Annotation added in relation to stone paved terrace</p>	<p>PROJECT NAME IONAD HIORT</p> <p>NOTES © Dualchas Architects info@dualchas.com To be read in conjunction with the specification and all relevant drawings. Contractor to check all dimensions on site. Do not scale from this drawing. Architect to be advised of any variation between the drawings and site conditions.</p>	<p>DRAWING SET PLANNING</p> <p>DRAWING TITLE SIDE ELEVATIONS</p>	<p>DRAWING NUMBER 924_202</p> <p>DRAWN / CHECKED MOC / RF</p>	<p>DATE 01/02/2024</p> <p>SCALE @A3 1:200</p>
	<p>REV DATE NOTE</p>				